





































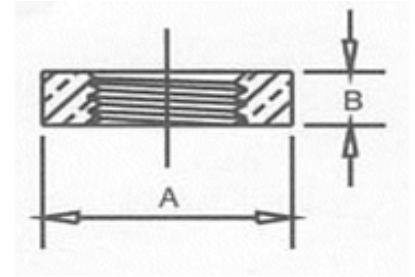


# DIMENSIONAL SPECIFICATIONS

## LEADED DOMESTIC BRASS FITTINGS\*\* 125 LB.

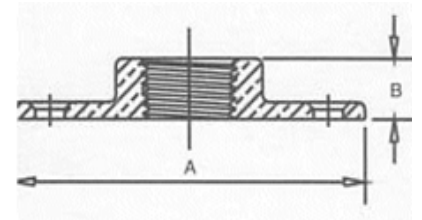
### HEX LOCKNUT

Part #	Size (IN.)	Approx. Net WT. (LB.)	A	B
119-02	1/8	0.02	0.88	0.25
119-04	1/4	0.03	0.88	0.25
119-06	3/8	0.04	1.00	0.28
119-08	1/2	0.07	1.28	0.31
119-12	3/4	0.09	1.50	0.28
119-16	1	0.12	1.75	0.34
119-20	1-1/4	0.30	2.09	0.38
119-24	1-1/2	0.35	2.44	0.41
119-32	2	0.60	2.94	0.47
119-40	2-1/2	1.15	3.50	0.56
119-48	3	1.70	4.25	0.63
119-64	4	3.20	5.38	0.81



### FLOOR FLANGE

Part #	Size (IN.)	Approx. Net WT. (LB.)	A	B
240-02	1/8	0.16	2.31	0.30
240-04	1/4	0.19	2.47	0.38
240-06	3/8	0.23	2.69	0.47
240-08	1/2	0.30	3.52	0.55
240-12	3/4	0.50	3.52	0.62
240-16	1	0.85	4.02	0.70
240-20	1 1/4	1.00	4.02	0.76
240-24	1 1/2	1.25	4.53	0.89
240-32	2	2.10	5.54	1.00



**\*\*WARNING:** This product contains chemicals known to the state of California to cause cancer and birth defects or other reproductive harm.  
**\*\*NOTE:** This product is not for use in potable water applications and contains a chemical known to cause birth defects or reproductive harm.

# MERIT BRASS

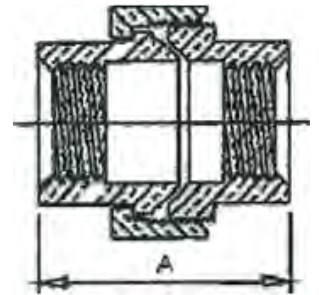
DIRECTING THE FLOW OF *Quality*

# DIMENSIONAL SPECIFICATIONS

LEADED DOMESTIC BRASS FITTINGS\*\* 125 LB.

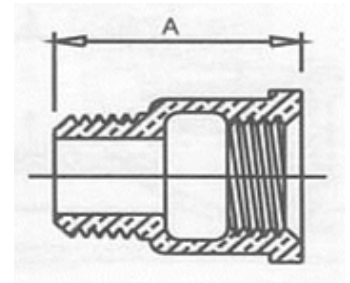
## UNION

Part #	Size (IN.)	Approx. Net WT. (LB.)	A
187-04	1/4	0.20	1.25
187-06	3/8	0.30	1.48
187-08	1/2	0.45	1.56
187-12	3/4	0.62	1.87
187-16	1	0.85	2.11
187-20	1-1/4	1.40	2.34
187-24	1-1/2	1.75	2.65
187-32	2	2.75	2.96



## EXTENSION PIECE

Part #	Size (IN.)	Approx. Net WT. (LB.)	A
232-06	3/8	0.10	1.03
232-08	1/2	0.19	1.47
232-12	3/4	0.26	1.81
232-16	1	0.45	2.19
232-20	1-1/4	0.65	2.06
232-24	1-1/2	0.75	2.09
232-32	2	1.15	2.31



\*\*WARNING: This product contains chemicals known to the state of California to cause cancer and birth defects or other reproductive harm.

\*\*NOTE: This product is not for use in potable water applications and contains a chemical known to cause birth defects or reproductive harm.

**MERIT  
BRASS**

DIRECTING THE FLOW OF *Quality*