



Please Scroll Down!

STAINLESS STEEL FITTINGS 150 LB. CAST THREADED & SOCKET WELD 1000 LB. BARSTOCK

STANDARD PATTERN



150# Cast
Threaded Fittings

Above are priced from PRICE LIST STF 212, but each category carries a separate discount structure.

MSS SP-114 PATTERN

150# Cast Threaded Fittings
150# Cast Socket Weld Fittings

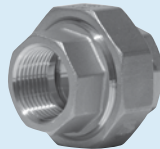


Above are priced from PRICE LIST STF 212, but each category carries a separate discount structure.

BARSTOCK

1000# Barstock Fittings

Above are priced from PRICE LIST BSTF 304, but each category carries a separate discount structure.



FLANGES

150# Cast MSS Pattern Flanges

Contact your Merit Customer Service Representative for List Price and Discount Details.



The Top Brass with a Stainless Reputation

Cleveland Headquarters:

PO Box 43127/One Merit Drive
Cleveland, OH 44143
Local Tel: 216 261 9800
Toll Free Tel: 800 726 9800
Toll Free Fax: 800 726 9880
E-MAIL: mbsales@meritbrass.com

Birmingham Distribution Center:

280 Oxmoor Court, Suite D
Birmingham, AL 35209
Local Tel: 205 945 5700
Toll Free Tel: 855 912 0409
Toll Free Fax: 888 853 6422
E-MAIL: mbsalesAL@meritbrass.com

Dallas Distribution Center:

10705 King William Drive
Dallas, TX 75220
Local Tel: 972 910 8494
Toll Free Tel: 877 259 2591
Toll Free Fax: 888 853 6422
E-MAIL: mbsalesTX@meritbrass.com

Reno Distribution Center:

200 Vista Blvd, Suite #106
Sparks, NV 89434
Local Tel: 775 353 3184
Toll Free Tel: 877 711 RENO ext. 325
Toll Free Fax: 877 376 0093
E-MAIL: mbsalesNV@meritbrass.com



BSTF 304
EFFECTIVE MARCH 29, 2004
SUPERCEDES BSTF 703

Meeting our customers' needs...Since 1937.

**1000 LB.
THREADED FITTINGS**

BARSTOCK

TYPE 304
STAINLESS STEEL

TYPE 316
STAINLESS STEEL

SIZE I.P.S.	STRAIGHT COUPLINGS	HALF COUPLINGS	REDUCING COUPLING	HEX BUSHING	CAP	SO. HEAD PLUG	HEX HEAD PLUG	UNION
1/8"	4.37 25	2.40 25	—	—	3.99 25	4.12 25	3.24 25	20.09 25
1/4"	5.38 25	2.93 25	6.07 25	5.61 25	3.99 25	4.69 25	3.36 25	20.09 25
3/8"	6.32 25	3.29 25	7.10 25	5.79 25	5.39 25	5.90 25	4.21 25	24.11 25
1/2"	8.58 25	4.57 25	8.89 25	7.62 25	5.54 25	7.07 25	5.60 25	30.08 25
3/4"	11.43 25	6.05 25	11.47 25	10.47 25	8.06 25	9.53 25	7.87 25	41.20 25
1"	18.78 25	10.62 10	20.09 10	15.16 25	11.84 10	14.63 25	13.16 10	59.82 10
1-1/4"	26.62 10	15.49 10	41.04 5	29.42 25	32.44 10	33.76 10	26.59 10	109.90 5
1-1/2"	32.22 10	19.90 10	45.39 5	38.11 25	37.48 10	36.01 10	33.11 10	129.20 5
2"	50.73 5	27.12 5	70.70 5	55.05 5	47.51 5	42.06 10	51.27 10	163.11 5
2-1/2"	—	—	—	100.26 5	—	—	85.70 5	—
3"	—	—	—	147.83 5	—	—	110.73 5	—

SIZE I.P.S.	STRAIGHT COUPLINGS	HALF COUPLINGS	REDUCING COUPLING	HEX BUSHING	CAP	SO. HEAD PLUG	HEX HEAD PLUG	UNION
1/8"	4.80 25	3.13 25	—	—	5.15 25	4.29 25	3.53 25	21.05 25
1/4"	5.83 25	3.22 25	7.93 25	5.88 25	5.15 25	4.29 25	3.71 25	21.05 25
3/8"	6.73 25	3.56 25	9.45 25	6.18 25	6.86 25	6.28 25	7.67 25	25.61 25
1/2"	9.10 25	5.13 25	12.87 25	8.46 25	7.41 25	7.67 25	6.40 25	32.19 25
3/4"	12.66 25	7.45 25	16.41 25	11.45 25	10.84 25	10.61 25	9.18 25	45.39 25
1"	20.55 25	12.12 10	27.16 10	17.79 25	16.66 10	15.70 25	15.09 10	65.47 10
1-1/4"	31.20 10	18.35 10	45.69 5	38.63 25	49.22 10	37.83 10	34.43 10	116.94 5
1-1/2"	39.83 10	24.52 10	51.52 5	45.74 25	53.81 10	41.08 10	42.77 10	140.18 5
2"	56.97 5	31.94 5	83.47 5	64.98 5	63.82 5	51.34 10	64.09 10	185.18 5
2-1/2"	—	—	—	125.57 5	—	—	133.82 5	—
3"	—	—	—	160.33 5	—	—	172.91 5	—