



Please Scroll Down!

STAINLESS STEEL FITTINGS 150 LB. CAST THREADED & SOCKET WELD 1000 LB. BARSTOCK

STANDARD PATTERN



150# Cast
Threaded Fittings

Above are priced from PRICE LIST STF 212, but each category carries a separate discount structure.

MSS SP-114 PATTERN

150# Cast Threaded Fittings
150# Cast Socket Weld Fittings

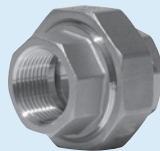


Above are priced from PRICE LIST STF 212, but each category carries a separate discount structure.

BARSTOCK

1000# Barstock Fittings

Above are priced from PRICE LIST BSTF 304, but each category carries a separate discount structure.



FLANGES

150# Cast MSS Pattern Flanges

Contact your Merit Customer Service Representative for List Price and Discount Details.



The Top Brass with a Stainless Reputation

Cleveland Headquarters:

PO Box 43127/One Merit Drive
Cleveland, OH 44143
Local Tel: 216 261 9800
Toll Free Tel: 800 726 9800
Toll Free Fax: 800 726 9880
E-MAIL: mbsales@meritbrass.com

Birmingham Distribution Center:

280 Oxmoor Court, Suite D
Birmingham, AL 35209
Local Tel: 205 945 5700
Toll Free Tel: 855 912 0409
Toll Free Fax: 888 853 6422
E-MAIL: mbsalesAL@meritbrass.com

Dallas Distribution Center:

10705 King William Drive
Dallas, TX 75220
Local Tel: 972 910 8494
Toll Free Tel: 877 259 2591
Toll Free Fax: 888 853 6422
E-MAIL: mbsalesTX@meritbrass.com

Reno Distribution Center:

200 Vista Blvd, Suite #106
Sparks, NV 89434
Local Tel: 775 353 3184
Toll Free Tel: 877 711 RENO ext. 325
Toll Free Fax: 877 376 0093
E-MAIL: mbsalesNV@meritbrass.com



Meeting our customers' needs...Since 1937.

TYPE 304 150 LB. CAST FITTINGS

THREADED AND SOCKET
WELD STAINLESS STEEL

SIZE I.P.S	90° ELBOW	45° ELBOW	90° STREET ELBOW	TEE	CROSS	INDUSTRY STD STRAIGHT COUPLING (P/N PREFIX KP4)	TRADITIONAL ISO 49 HEAVY PATTERN STRAIGHT CPLG. (P/N PREFIX K4)	STRAIGHT COUPLING - MSS (P/N PREFIX SWM4 & M4)	INDUSTRY STD HALF COUPLING (P/N PREFIX KP4)	TRADITIONAL ISO 49 HEAVY PATTERN HALF CPLG. (P/N PREFIX K4)	HALF COUPLING - MSS (P/N PREFIX SWM4 & M4)	REDUCING COUPLING	HEX BUSHING	CAP	SQ. HEAD PLUG	HEX HEAD PLUG	LOCKNUT	UNION	WELDING SPUD
1/8"	7.83 25	9.90 25	11.18 25	10.50 25	18.28 25	4.27 25	5.95 25	6.04 25	3.07 25	4.28 25	4.34 25	—	—	3.94 25	3.39 25	3.75 25	16.09 25	26.44 25	18.69 10
1/4"	7.83 25	9.90 25	11.18 25	10.50 25	18.28 25	5.07 25	7.06 25	7.17 25	3.40 25	4.74 25	4.81 25	8.19 25	5.11 25	5.65 25	4.00 25	3.75 25	16.09 25	26.44 25	18.69 10
3/8"	9.73 25	11.63 25	13.46 25	13.38 25	21.78 25	5.91 25	8.23 25	8.36 25	3.67 25	5.11 25	5.19 25	9.09 25	5.58 25	6.64 25	5.35 25	4.63 25	16.09 25	26.95 25	22.80 10
1/2"	10.36 25	12.78 25	15.84 25	14.05 25	26.83 25	8.37 25	11.66 25	11.85 25	5.11 25	7.12 25	7.24 25	8.68 25	7.06 25	6.89 25	7.64 25	7.30 25	16.09 25	29.17 25	29.20 10
3/4"	14.86 25	18.66 25	21.98 25	22.35 25	45.91 10	12.08 25	16.83 25	17.09 25	6.83 25	9.51 25	9.66 25	13.06 25	10.33 25	8.63 25	9.32 25	9.18 25	19.63 25	36.96 25	31.66 10
1"	21.06 10	22.79 10	38.04 10	28.46 10	67.94 5	18.35 25	25.56 25	25.95 25	8.76 10	12.20 10	12.39 10	17.86 25	14.35 25	12.97 10	11.79 25	15.85 10	22.26 10	55.75 10	35.66 10
1-1/4"	36.96 5	36.49 5	55.25 5	56.61 5	80.68	29.17 10	40.63 10	41.26 10	14.29 10	19.91 10	20.21 10	26.05 10	25.67 25	23.47 10	23.47 10	25.43 10	46.06 10	96.69 5	36.97 10
1-1/2"	49.19 5	43.41 5	65.36 5	70.37 5	99.95	34.63 10	48.24 10	48.98 10	18.33 10	25.53 10	25.93 10	37.56 10	30.72 25	30.80 10	27.99 10	27.83 10	46.10 10	109.37 5	40.00 10
2"	62.37 5	61.08 5	88.52 5	90.39 5	143.08	48.81 5	67.99 5	69.04 5	25.12 5	34.99 5	35.54 5	62.72 5	46.86 10	39.28 5	33.13 10	38.42 10	50.70 10	130.94	43.96 10
2-1/2"	142.07	168.02	186.95	193.87	411.16	107.14	149.25	151.56	60.94	84.89	86.20	134.45	80.32 5	70.83	63.13	68.88 5	64.09	354.63	62.01
3"	181.03	231.57	248.00	279.40	444.18	138.51	192.94	195.93	83.80	116.73	118.53	191.48	123.08	97.93	79.32	94.50	81.38	446.60	71.61
4"	353.29	412.10	482.90	504.64	721.60	215.30	299.91	304.56	136.95	190.77	193.72	317.17	223.95	165.77	172.15	197.78	116.65	724.88	126.64

NUMBERS IN BLUE INDICATE STANDARD CARTON QUANTITIES

STF 212

EFFECTIVE FEBRUARY 13, 2012

SUPERCEDES STF 304

TYPE 316 150 LB. CAST FITTINGS

THREADED AND SOCKET
WELD STAINLESS STEEL

SIZE IPS	90° ELBOW	45° ELBOW	90° STREET ELBOW	TEE	CROSS	INDUSTRY STD STRAIGHT COUPLING (P/N PREFIX KP6)	TRADITIONAL ISO 49 HEAVY PATTERN STRAIGHT CPLG. (P/N PREFIX MG)	STRAIGHT COUPLING - MSS (P/N PREFIX SWMG & MG)	INDUSTRY STD HALF COUPLING (P/N PREFIX KP6)	TRADITIONAL ISO 49 HEAVY PATTERN HALF CPLG. (P/N PREFIX MG)	HALF COUPLING - MSS (P/N PREFIX SWMG & MG)	REDUCING COUPLING	HEX BUSHING	CAP	SQ. HEAD PLUG	HEX HEAD PLUG	LOCKNUT	UNION	WELDING SPUD
1/8"	10.04 25	11.95 25	13.45 25	12.48 25	22.57 25	5.65 25	7.56 25	7.72 25	3.59 25	4.80 25	4.90 25	—	—	4.78 25	3.65 25	4.64 25	17.56 25	30.00 25	20.03 25
1/4"	10.04 25	11.95 25	13.71 25	12.48 25	22.57 25	5.65 25	7.56 25	7.72 25	3.59 25	4.80 25	4.90 25	9.32 25	5.76 25	6.43 25	4.63 25	4.64 25	17.56 25	30.00 25	21.65 25
3/8"	12.19 25	14.60 25	16.85 25	16.54 25	26.55 25	6.63 25	8.87 25	9.06 25	4.18 25	5.59 25	5.70 25	10.35 25	6.57 25	7.59 25	6.10 25	5.24 25	17.56 25	30.52 25	23.84 25
1/2"	13.46 25	16.03 25	19.82 25	17.45 25	32.96 25	9.68 25	12.95 25	13.21 25	6.09 25	8.15 25	8.33 25	12.41 25	7.72 25	8.78 25	8.63 25	8.79 25	17.56 25	33.14 25	32.41 25
3/4"	19.52 25	21.05 25	26.12 25	25.73 25	57.58 10	13.99 25	18.72 25	19.10 25	7.75 25	10.37 25	10.59 25	15.92 25	11.47 25	10.08 25	10.55 25	11.08 25	22.03 25	42.03 25	35.69 10
1"	24.51 10	26.37 10	41.70 10	32.30 10	69.50 5	20.84 25	27.88 25	28.46 25	11.79 10	15.78 10	16.10 10	26.27 25	16.39 25	15.44 10	13.19 25	17.64 10	24.75 10	63.44 10	43.28 10
1-1/4"	42.02 5	41.48 5	62.33 5	64.29 5	100.49	33.14 10	44.34 10	45.25 10	17.87 10	23.91 10	24.40 10	34.30 10	32.03 25	30.34 10	31.18 10	30.48 10	50.14 10	109.69 5	44.18 10
1-1/2"	56.04 5	49.33 5	69.43 5	78.00 5	125.42	39.38 10	52.69 10	53.77 10	23.78 10	31.82 10	32.47 10	45.81 10	37.87 25	38.90 10	34.46 10	36.08 10	50.14 10	124.50 5	47.52 10
2"	70.84 5	68.97 5	99.16 5	100.49 3	172.78	55.44 5	74.18 5	75.69 5	31.13 5	41.65 5	42.51 5	77.27 5	53.79 10	49.80 5	47.55 10	52.06 10	55.02 10	148.48	50.04 10
2-1/2"	155.65	180.71	231.26	234.92	487.72	130.25	174.27	177.83	74.34	99.47	101.49	167.63	91.39 5	88.35	76.59 5	83.75 5	70.58	381.58	64.68
3"	214.12	260.85	299.73	335.31	531.18	168.25	225.12	229.72	101.29	135.53	138.28	228.07	140.52	115.69	93.10	107.47	86.73	530.56	76.21
4"	393.49	491.07	591.93	546.29	860.70	259.83	347.65	354.74	166.64	222.96	227.51	378.15	252.76	201.03	204.08	240.22	139.56	903.83	154.50

NUMBERS IN BLUE INDICATE STANDARD CARTON QUANTITIES

© 2012 Merit Brass All rights reserved