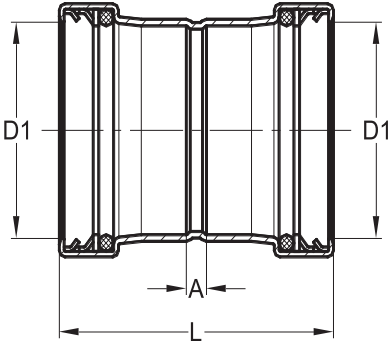


XL Coupling with Stop		P x P
	<div>Job Name <input type="text"/></div> <div>Job Location <input type="text"/></div> <div>P.O.# <input type="text"/></div> <div>Engineer <input type="text"/></div> <div>Contractor <input type="text"/></div> <div>Wholesaler <input type="text"/></div> <div>Merit Associate <input type="text"/></div>	
	<p>CopperPress® Large Diameter Coupling with Stop P x P is available in sizes 2½" – 4" with an EPDM sealing element.</p> <ul style="list-style-type: none">• FIRST TO MARKET Visual Indicator Press Ring® (VIPR®) - facilitates immediate identification of un-pressed connections.• Leak Before Press (LBP) - in addition to the VIPR®, all sizes have leak before press technology, which guarantees a visual indication if the fitting is not pressed.• Applications: HVAC, plumbing, municipal, mechanical and industrial applications. <p>CopperPress® Operational Parameters: EPDM working pressure range from full vacuum to 300 psi for water.</p> <p>CopperPress® Fitting Certifications ICC-ES LC1002, NSF/ANSI/CAN 61, NSF/ANSI/CAN 372, IAPMO Z 1117.</p> <p>CopperPress® Codes and Standards ASME B31.1, B31.3, B31.9, IPC, IMC, IRC, UPC, UMC, CPC & CMC, City of Los Angeles Plumbing and Mechanical Codes, Massachusetts Regulation 248 CMR 10.00: Uniform State Plumbing Code, Massachusetts State Building Code 780 CMR Ninth Edition: Chapter 28.</p>	

XL Coupling with Stop			P x P
Item Number	D1 (in)	L (in)	A (in)
EPDM			
MB22230	2½"	3.86	0.39
MB22240	3"	4.37	0.35
MB22250	4"	5.20	0.39



XL Coupling w/o Stop

P x P



Job Name

Job Location

P.O.#

Engineer

Contractor

Wholesaler

Merit Associate

CopperPress® Large Diameter Coupling w/o Stop P x P is available in sizes 2½" – 4" with an EPDM sealing element.

- **FIRST TO MARKET Visual Indicator Press Ring® (VIPR®)** - facilitates immediate identification of un-pressed connections.
- **Leak Before Press (LBP)** - in addition to the VIPR®, all sizes have leak before press technology, which guarantees a visual indication if the fitting is not pressed.
- **Applications:** HVAC, plumbing, municipal, mechanical and industrial applications.

CopperPress® Operational Parameters:

EPDM working pressure range from full vacuum to 300 psi for water.

CopperPress® Fitting Certifications

ICC-ES LC1002, NSF/ANSI/CAN 61, NSF/ANSI/CAN 372, IAPMO Z 1117.

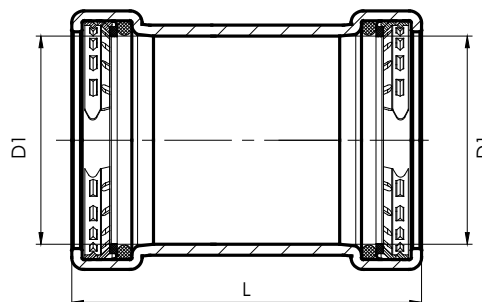
CopperPress® Codes and Standards


ASME B31.1, B31.3, B31.9, IPC, IMC, IRC, UPC, UMC, CPC & CMC, City of Los Angeles Plumbing and Mechanical Codes, Massachusetts Regulation 248 CMR 10.00: Uniform State Plumbing Code, Massachusetts State Building Code 780 CMR Ninth Edition: Chapter 28.

XL Coupling w/o Stop

P x P

Item Number	D1 (in)	L (in)
EPDM		
MB22260	2½"	3.86
MB22270	3"	4.37
MB22280	4"	5.20



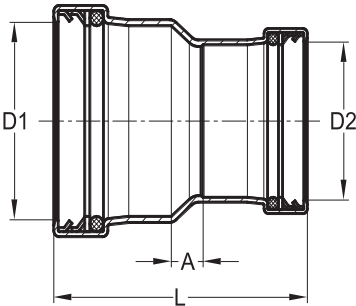
XL Reducing Coupling		P x P	
	Job Name	<input type="text"/>	
	Job Location	<input type="text"/>	
	P.O.#	<input type="text"/>	
	Engineer	<input type="text"/>	
	Contractor	<input type="text"/>	
	Wholesaler	<input type="text"/>	
	Merit Associate	<input type="text"/>	
<p>CopperPress® Large Diameter Reducing Coupling P x P is available in sizes 2½" x 1" – 4" x 3" with an EPDM sealing element.</p> <ul style="list-style-type: none">• FIRST TO MARKET Visual Indicator Press Ring® (VIPR®) - facilitates immediate identification of un-pressed connections.• Leak Before Press (LBP) - in addition to the VIPR®, all sizes have leak before press technology, which guarantees a visual indication if the fitting is not pressed.• Applications: HVAC, plumbing, municipal, mechanical and industrial applications.			


XL Reducing Coupling					P x P
Item Number	D1 (in)	D2 (in)	L (in)	A (in)	
EPDM					
MB22290	2½"	1"	4.07	1.40	
MB22300	2½"	1¼"	3.90	1.02	
MB22310	2½"	1½"	4.17	0.98	
MB22320	2½"	2"	3.98	0.63	
MB22330	3"	1¼"	4.76	1.61	
MB22340	3"	1½"	4.76	1.30	
MB22350	3"	2"	4.65	1.02	
MB22360	3"	2½"	4.29	0.55	
MB22370	4"	2"	5.98	1.97	
MB22380	4"	2½"	5.47	1.34	
MB22390	4"	3"	5.24	0.83	

CopperPress® Operational Parameters:
EPDM working pressure range from full vacuum to 300 psi for water.

CopperPress® Fitting Certifications
ICC-ES LC1002, NSF/ANSI/CAN 61, NSF/ANSI/CAN 372, IAPMO Z 1117.

CopperPress® Codes and Standards
ASME B31.1, B31.3, B31.9, IPC, IMC, IRC, UPC, UMC, CPC & CMC, City of Los Angeles Plumbing and Mechanical Codes, Massachusetts Regulation 248 CMR 10.00: Uniform State Plumbing Code, Massachusetts State Building Code 780 CMR Ninth Edition: Chapter 28.



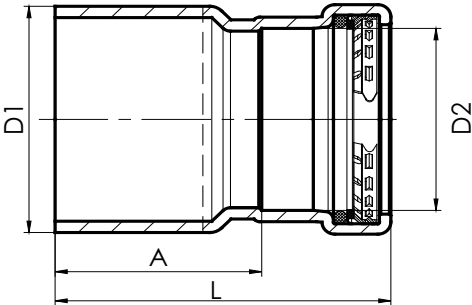
XL Bushing Reducer	FTG x P
	Job Name <input type="text"/>
	Job Location <input type="text"/>
	P.O.# <input type="text"/>
	Engineer <input type="text"/>
	Contractor <input type="text"/>
	Wholesaler <input type="text"/>
	Merit Associate <input type="text"/>
<p>CopperPress® Large Diameter Bushing Reducer FTG x P is available in sizes 2½" x 1" – 4" x 3" with an EPDM sealing element.</p> <ul style="list-style-type: none">• FIRST TO MARKET Visual Indicator Press Ring® (VIPR®) - facilitates immediate identification of un-pressed connections.• Leak Before Press (LBP) - in addition to the VIPR®, all sizes have leak before press technology, which guarantees a visual indication if the fitting is not pressed.• Applications: HVAC, plumbing, municipal, mechanical and industrial applications.	

XL Bushing Reducer				FTG x P
Item Number	D1 (in)	D2 (in)	L (in)	A (in)
EPDM				
MB22400	2½"	1"	4.25	3.31
MB22410	2½"	1¼"	4.06	2.91
MB22420	2½"	1½"	4.29	2.83
MB22430	2½"	2"	4.25	2.64
MB22440	3"	1¼"	4.53	3.39
MB22450	3"	1½"	4.92	3.46
MB22460	3"	2"	4.80	3.19
MB22470	3"	2½"	4.53	2.80
MB22480	4"	2"	6.18	4.57
MB22490	4"	2½"	5.79	4.06
MB22500	4"	3"	5.71	3.70


CopperPress® Operational Parameters:
EPDM working pressure range from full vacuum to 300 psi for water.

CopperPress® Fitting Certifications
ICC-ES LC1002, NSF/ANSI/CAN 61, NSF/ANSI/CAN 372, IAPMO Z 1117.

CopperPress® Codes and Standards
ASME B31.1, B31.3, B31.9, IPC, IMC, IRC, UPC, UMC, CPC & CMC, City of Los Angeles Plumbing and Mechanical Codes, Massachusetts Regulation 248 CMR 10.00: Uniform State Plumbing Code, Massachusetts State Building Code 780 CMR Ninth Edition: Chapter 28.



XL 90° Elbow



P x P

Job Name

Job Location

P.O.#

Engineer

Contractor

Wholesaler

Merit Associate

CopperPress® Large Diameter 90° Elbow P x P is available in sizes 2½" – 4" with an EPDM sealing element.

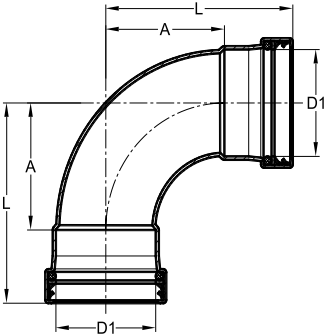
- **FIRST TO MARKET Visual Indicator Press Ring® (VIPR®)** - facilitates immediate identification of un-pressed connections.
- **Leak Before Press (LBP)** - in addition to the VIPR®, all sizes have leak before press technology, which guarantees a visual indication if the fitting is not pressed.
- **Applications:** HVAC, plumbing, municipal, mechanical and industrial applications.

CopperPress® Operational Parameters:
EPDM working pressure range from full vacuum to 300 psi for water.

CopperPress® Fitting Certifications
ICC-ES LC1002, NSF/ANSI/CAN 61, NSF/ANSI/CAN 372, IAPMO Z 1117.

CopperPress® Codes and Standards
ASME B31.1, B31.3, B31.9, IPC, IMC, IRC, UPC, UMC, CPC & CMC, City of Los Angeles Plumbing and Mechanical Codes, Massachusetts Regulation 248 CMR 10.00: Uniform State Plumbing Code, Massachusetts State Building Code 780 CMR Ninth Edition: Chapter 28.

XL 90° Elbow			P x P
Item Number	D1 (in)	L (in)	A (in)
EPDM			
MB22110	2½"	4.84	3.11
MB22120	3"	5.71	3.70
MB22130	4"	7.17	4.76



XL 90° Street Elbow

FTG x P

Job Name

Job Location

P.O.#

Engineer

Contractor

Wholesaler

Merit Associate

CopperPress® Large Diameter 90° Street Elbow FTG x P is available in sizes 2½" – 4" with an EPDM sealing element.

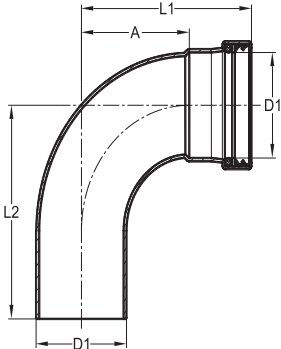
- **FIRST TO MARKET Visual Indicator Press Ring® (VIPR®)** - facilitates immediate identification of un-pressed connections.
- **Leak Before Press (LBP)** - in addition to the VIPR®, all sizes have leak before press technology, which guarantees a visual indication if the fitting is not pressed.
- **Applications:** HVAC, plumbing, municipal, mechanical and industrial applications.


CopperPress® Operational Parameters:
EPDM working pressure range from full vacuum to 300 psi for water.

CopperPress® Fitting Certifications
ICC-ES LC1002, NSF/ANSI/CAN 61, NSF/ANSI/CAN 372, IAPMO Z 1117.

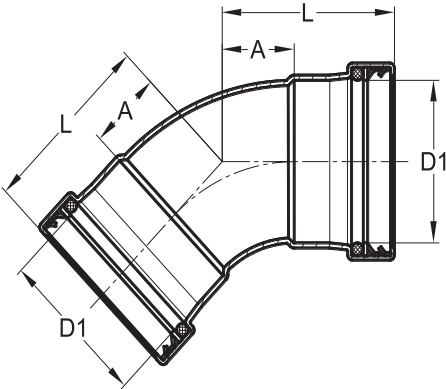
CopperPress® Codes and Standards
ASME B31.1, B31.3, B31.9, IPC, IMC, IRC, UPC, UMC, CPC & CMC, City of Los Angeles Plumbing and Mechanical Codes, Massachusetts Regulation 248 CMR 10.00: Uniform State Plumbing Code, Massachusetts State Building Code 780 CMR Ninth Edition: Chapter 28.

XL 90° Street Elbow				FTG x P
Item Number	D1 (in)	L1 (in)	A (in)	L2 (in)
EPDM				
MB22140	2½"	4.69	2.95	5.16
MB22150	3"	5.55	3.54	6.06
MB22160	4"	7.17	4.76	7.64




XL 45° Elbow	P x P
	<div>Job Name</div> <div></div>
	<div>Job Location</div> <div></div>
	<div>P.O.#</div> <div></div>
	<div>Engineer</div> <div></div>
	<div>Contractor</div> <div></div>
	<div>Wholesaler</div> <div></div>
	<div>Merit Associate</div> <div></div>
<p>CopperPress® Large Diameter 45° Elbow is available in sizes 2½" – 4" with an EPDM sealing element.</p> <ul style="list-style-type: none">• FIRST TO MARKET Visual Indicator Press Ring® (VIPR®) - facilitates immediate identification of un-pressed connections.• Leak Before Press (LBP) - in addition to the VIPR®, all sizes have leak before press technology, which guarantees a visual indication if the fitting is not pressed.• Applications: HVAC, plumbing, municipal, mechanical and industrial applications. <p>CopperPress® Operational Parameters: EPDM working pressure range from full vacuum to 300 psi for water.</p> <p>CopperPress® Fitting Certifications ICC-ES LC1002, NSF/ANSI/CAN 61, NSF/ANSI/CAN 372, IAPMO Z 1117.</p> <p>CopperPress® Codes and Standards ASME B31.1, B31.3, B31.9, IPC, IMC, IRC, UPC, UMC, CPC & CMC, City of Los Angeles Plumbing and Mechanical Codes, Massachusetts Regulation 248 CMR 10.00: Uniform State Plumbing Code, Massachusetts State Building Code 780 CMR Ninth Edition: Chapter 28.</p>	

XL 45° Elbow		P x P	
Item Number	D1 (in)	L (in)	A (in)
EPDM			
MB22170	2½"	3.15	1.42
MB22180	3"	3.70	1.69
MB22190	4"	4.80	2.40



XL 45° Street Elbow



FTG x P

Job Name

Job Location

P.O.#

Engineer

Contractor

Wholesaler

Merit Associate

CopperPress® Large Diameter 45° Street Elbow is available in sizes 2½" – 4" with an EPDM sealing element.

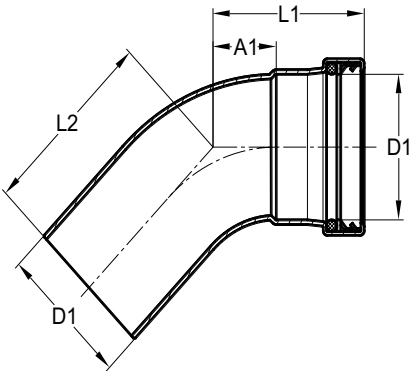
- **FIRST TO MARKET Visual Indicator Press Ring® (VIPR®)** - facilitates immediate identification of un-pressed connections.
- **Leak Before Press (LBP)** - in addition to the VIPR®, all sizes have leak before press technology, which guarantees a visual indication if the fitting is not pressed.
- **Applications:** HVAC, plumbing, municipal, mechanical and industrial applications.

CopperPress® Operational Parameters:
EPDM working pressure range from full vacuum to 300 psi for water.

CopperPress® Fitting Certifications
ICC-ES LC1002, NSF/ANSI/CAN 61, NSF/ANSI/CAN 372, IAPMO Z 1117.

CopperPress® Codes and Standards
ASME B31.1, B31.3, B31.9, IPC, IMC, IRC, UPC, UMC, CPC & CMC, City of Los Angeles Plumbing and Mechanical Codes, Massachusetts Regulation 248 CMR 10.00: Uniform State Plumbing Code, Massachusetts State Building Code 780 CMR Ninth Edition: Chapter 28.

XL 45° Street Elbow				FTG x P
Item Number	D1 (in)	L (in)	A (in)	L2 (in)
EPDM				
MB22200	2½"	3.15	1.42	3.39
MB22210	3"	3.70	1.69	3.98
MB22220	4"	4.80	2.40	5.08



XL Equal Tee

P X P X P



Job Name

Job Location

P.O.#

Engineer

Contractor

Wholesaler

Merit Associate

- CopperPress® Large Diameter Equal Tee is available in sizes 2½" – 4" with an EPDM sealing element.
- **FIRST TO MARKET Visual Indicator Press Ring® (VIPR®)** - facilitates immediate identification of un-pressed connections.
 - **Leak Before Press (LBP)** - in addition to the VIPR®, all sizes have leak before press technology, which guarantees a visual indication if the fitting is not pressed.
 - **Applications:** HVAC, plumbing, municipal, mechanical and industrial applications.

CopperPress® Operational Parameters:
EPDM working pressure range from full vacuum to 300 psi for water.

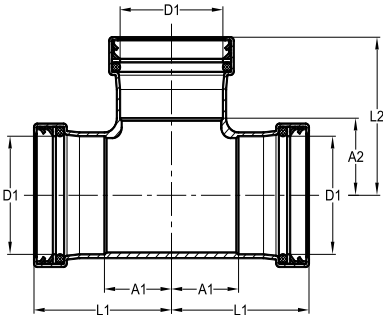
CopperPress® Fitting Certifications
ICC-ES LC1002, NSF/ANSI/CAN 61, NSF/ANSI/CAN 372, IAPMO Z 1117.

CopperPress® Codes and Standards
ASME B31.1, B31.3, B31.9, IPC, IMC, IRC, UPC, UMC, CPC & CMC, City of Los Angeles Plumbing and Mechanical Codes, Massachusetts Regulation 248 CMR 10.00: Uniform State Plumbing Code, Massachusetts State Building Code 780 CMR Ninth Edition: Chapter 28.

XL Equal Tee

P X P X P

Item Number	D1 (in)	L1 (in)	A1 (in)	L2 (in)	A2 (in)
EPDM					
MB24255	2½"	3.56	1.83	3.66	1.93
MB24440	3"	4.11	2.11	4.33	2.32
MB24550	4"	5.00	2.60	5.12	2.72

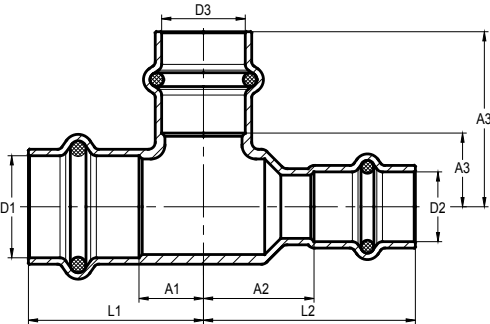


XL Unequal Tee	P x P x P
	Job Name <input type="text"/>
	Job Location <input type="text"/>
	P.O.# <input type="text"/>
	Engineer <input type="text"/>
	Contractor <input type="text"/>
	Wholesaler <input type="text"/>
	Merit Associate <input type="text"/>

CopperPress® Large Diameter Unequal Tee is available in sizes 2½" x ¾" x 2½" – 4" x 3" with an EPDM sealing element.

- **FIRST TO MARKET Visual Indicator Press Ring® (VIPR®)** - facilitates immediate identification of un-pressed connections.
- **Leak Before Press (LBP)** - in addition to the VIPR®, all sizes have leak before press technology, which guarantees a visual indication if the fitting is not pressed.
- **Applications:** HVAC, plumbing, municipal, mechanical and industrial applications.

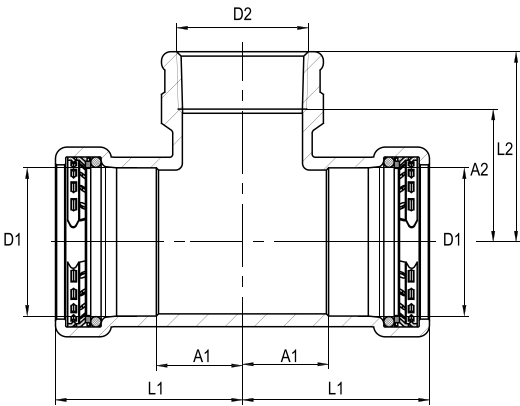
XL Unequal Tee										CopperPress® Operational Parameters: EPDM working pressure range from full vacuum to 300 psi for water. CopperPress® Fitting Certifications ICC-ES LC1002, NSF/ANSI/CAN 61, NSF/ANSI/CAN 372, IAPMO Z 1117. CopperPress® Codes and Standards ASME B31.1, B31.3, B31.9, IPC, IMC, IRC, UPC, UMC, CPC & CMC, City of Los Angeles Plumbing and Mechanical Codes, Massachusetts Regulation 248 CMR 10.00: Uniform State Plumbing Code, Massachusetts State Building Code 780 CMR Ninth Edition: Chapter 28.
Item Number	D1 (in)	D2 (in)	D3 (in)	L1 (in)	A1 (in)	L2 (in)	A2 (in)	L3 (in)	A3 (in)	
EPDM										
MB24110	2½"	¾"	2½"	3.56	1.83	4.17	3.23	3.66	1.93	
MB24120	2½"	1"	2½"	3.56	1.83	4.19	3.25	3.60	1.87	
MB24130	2½"	1¼"	2½"	3.56	1.83	4.35	3.21	3.60	1.87	
MB24140	2½"	1½"	2½"	3.56	1.83	4.61	3.15	3.60	1.87	
MB24150	2½"	2"	¾"	3.25	1.52	3.72	2.11	3.74	2.80	
MB24160	2½"	2"	1"	3.25	1.52	3.72	2.11	3.54	2.60	
MB24165	2½"	2"	1¼"	3.25	1.52	3.72	2.11	3.58	2.44	
MB24170	2½"	2"	1½"	3.25	1.52	3.72	2.11	3.74	2.28	
MB24180	2½"	2"	2"	3.25	1.52	3.72	2.11	3.43	1.81	
MB24190	2½"	2"	2½"	3.56	1.83	3.56	1.95	3.66	1.93	
MB24200	2½"	2½"	½"	3.25	1.52	3.25	1.52	3.66	2.85	
MB24210	2½"	2½"	¾"	3.25	1.52	3.25	1.52	3.70	2.76	
MB24220	2½"	2½"	1"	3.25	1.52	3.25	1.52	3.58	2.64	
MB24230	2½"	2½"	1¼"	3.25	1.52	3.25	1.52	3.58	2.44	
MB24240	2½"	2½"	1½"	3.25	1.52	3.25	1.52	3.74	2.28	
MB24250	2½"	2½"	2"	3.25	1.52	3.25	1.52	3.43	1.81	




XL Unequal Tee (continued)									P x P x P
Item Number	D1 (in)	D2 (in)	D3 (in)	L1 (in)	A1 (in)	L2 (in)	A2 (in)	L3 (in)	A3 (in)
EPDM									
MB24270	3"	¾"	3"	4.11	2.11	5.10	4.15	4.31	2.30
MB24280	3"	1"	3"	4.11	2.11	4.92	3.98	4.31	2.30
MB24290	3"	1¼"	3"	4.11	2.11	5.02	3.88	4.31	2.30
MB24300	3"	1½"	3"	4.11	2.11	5.10	3.64	4.31	2.30
MB24310	3"	2"	2"	3.64	1.63	4.35	2.74	3.76	2.15
MB24320	3"	2"	2½"	3.98	1.97	4.69	3.07	4.00	2.26
MB24330	3"	2"	3"	4.11	2.11	4.55	2.93	4.31	2.30
MB24340	3"	2½"	2"	3.64	1.63	4.15	2.42	3.76	2.15
MB24350	3"	2½"	2½"	3.98	1.97	4.49	2.76	4.00	2.26
MB24360	3"	2½"	3"	4.11	2.11	4.74	3.01	4.31	2.30
MB24370	3"	3"	½"	3.64	1.63	3.64	1.63	4.07	3.27
MB24380	3"	3"	¾"	3.64	1.63	3.64	1.63	4.15	3.21
MB24390	3"	3"	1"	3.64	1.63	3.64	1.63	3.96	3.01
MB24400	3"	3"	1¼"	3.64	1.63	3.64	1.63	4.07	2.93
MB24410	3"	3"	1½"	3.64	1.63	3.64	1.63	4.31	2.85
MB24420	3"	3"	2"	3.64	1.63	3.64	1.63	3.76	2.15
MB24430	3"	3"	2½"	3.98	1.97	3.98	1.97	4.00	2.26
MB24450	4"	3"	2"	4.02	1.61	4.80	2.80	3.25	1.63
MB24460	4"	3"	3"	4.51	2.11	4.82	2.81	4.63	2.62
MB24470	4"	4"	½"	4.02	1.61	4.02	1.61	4.63	3.82
MB24480	4"	4"	¾"	4.02	1.61	4.02	1.61	4.59	3.64
MB24490	4"	4"	1"	4.02	1.61	4.02	1.61	4.43	3.48
MB24500	4"	4"	1¼"	4.02	1.61	4.02	1.61	4.43	3.29
MB24510	4"	4"	1½"	4.02	1.61	4.02	1.61	4.59	3.13
MB24520	4"	4"	2"	4.02	1.61	4.02	1.61	4.23	2.62
MB24530	4"	4"	2½"	4.17	1.77	4.17	1.77	4.47	2.74
MB24540	4"	4"	3"	4.51	2.11	4.51	2.11	4.59	2.58

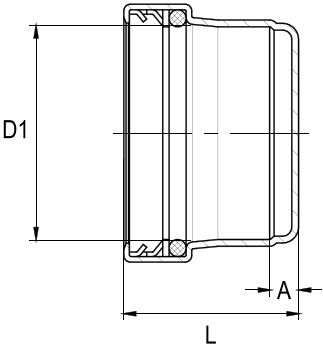
XL Reducing Tee (P x FPT)	P x P x FPT
	<div><div>Job Name</div><div>Job Location</div><div>P.O.#</div><div>Engineer</div><div>Contractor</div><div>Wholesaler</div><div>Merit Associate</div></div>
<p>CopperPress® Large Diameter Reducing Tee P x P x FPT is available in sizes 2½" x ¾" FPT – 4" x 2" FPT with an EPDM sealing element.</p> <ul style="list-style-type: none">• FIRST TO MARKET Visual Indicator Press Ring® (VIPR®) - facilitates immediate identification of un-pressed connections.• Leak Before Press (LBP) - in addition to the VIPR®, all sizes have leak before press technology, which guarantees a visual indication if the fitting is not pressed.• Applications: HVAC, plumbing, municipal, mechanical and industrial applications. <p>CopperPress® Operational Parameters: EPDM working pressure range from full vacuum to 300 psi for water.</p> <p>CopperPress® Fitting Certifications ICC-ES LC1002, NSF/ANSI/CAN 61, NSF/ANSI/CAN 372, IAPMO Z 1117.</p> <p>CopperPress® Codes and Standards ASME B31.1, B31.3, B31.9, IPC, IMC, IRC, UPC, UMC, CPC & CMC, City of Los Angeles Plumbing and Mechanical Codes, Massachusetts Regulation 248 CMR 10.00: Uniform State Plumbing Code, Massachusetts State Building Code 780 CMR Ninth Edition: Chapter 28.</p>	

XL Reducing Tee (P x FPT)			P x P x FPT			
Item Number	D1 (in)	D2 (in)	L1 (in)	A1 (in)	L2 (in)	A2 (in)
EPDM						
MB42000	2½"	¾" FPT	3.25	1.52	3.50	2.87
MB42010	2½"	2" FPT	3.25	1.52	3.43	2.48
MB42030	3"	¾" FPT	3.64	1.63	4.02	3.39
MB42040	3"	2" FPT	3.64	1.63	3.58	2.64
MB42050	4"	¾" FPT	4.02	1.61	3.90	3.27
MB42060	4"	2" FPT	4.02	1.61	3.70	2.76



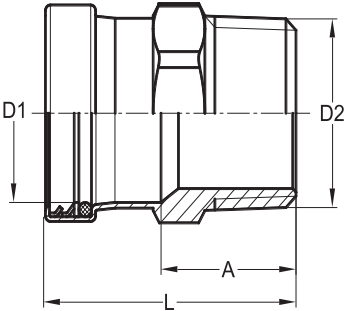
XL Cap		P
	<div>Job Name</div> <div>Job Location</div> <div>P.O.#</div> <div>Engineer</div> <div>Contractor</div> <div>Wholesaler</div> <div>Merit Associate</div>	
	<p>CopperPress® Large Diameter Cap is available in sizes 2½" – 4" with an EPDM sealing element.</p> <ul style="list-style-type: none">• FIRST TO MARKET Visual Indicator Press Ring® (VIPR®) - facilitates immediate identification of un-pressed connections.• Leak Before Press (LBP) - in addition to the VIPR®, all sizes have leak before press technology, which guarantees a visual indication if the fitting is not pressed.• Applications: HVAC, plumbing, municipal, mechanical and industrial applications. <p>CopperPress® Operational Parameters: EPDM working pressure range from full vacuum to 300 psi for water.</p> <p>CopperPress® Fitting Certifications ICC-ES LC1002, NSF/ANSI/CAN 61, NSF/ANSI/CAN 372, IAPMO Z 1117.</p> <p>CopperPress® Codes and Standards ASME B31.1, B31.3, B31.9, IPC, IMC, IRC, UPC, UMC, CPC & CMC, City of Los Angeles Plumbing and Mechanical Codes, Massachusetts Regulation 248 CMR 10.00: Uniform State Plumbing Code, Massachusetts State Building Code 780 CMR Ninth Edition: Chapter 28.</p>	

XL Cap				P
Item Number	D1 (in)	L (in)	A (in)	
EPDM				
MB23110	2½"	2.17	0.43	
MB23120	3"	2.44	0.43	
MB23130	4"	2.87	0.47	




XL Male Adapter	P x MPT	
	<div>Job Name</div> <div>Job Location</div> <div>P.O.#</div> <div>Engineer</div> <div>Contractor</div> <div>Wholesaler</div> <div>Merit Associate</div>	
	<p>CopperPress® Large Diameter Male Adapter is available in sizes 2½" x 2½" MPT – 4" x 4" MPT with an EPDM sealing element.</p> <ul style="list-style-type: none">• FIRST TO MARKET Visual Indicator Press Ring® (VIPR®) - facilitates immediate identification of un-pressed connections.• Leak Before Press (LBP) - in addition to the VIPR®, all sizes have leak before press technology, which guarantees a visual indication if the fitting is not pressed.• Applications: HVAC, plumbing, municipal, mechanical and industrial applications. <p>CopperPress® Operational Parameters: EPDM working pressure range from full vacuum to 300 psi for water.</p> <p>CopperPress® Fitting Certifications ICC-ES LC1002, NSF/ANSI/CAN 61, NSF/ANSI/CAN 372, IAPMO Z 1117.</p> <p>CopperPress® Codes and Standards ASME B31.1, B31.3, B31.9, IPC, IMC, IRC, UPC, UMC, CPC & CMC, City of Los Angeles Plumbing and Mechanical Codes, Massachusetts Regulation 248 CMR 10.00: Uniform State Plumbing Code, Massachusetts State Building Code 780 CMR Ninth Edition: Chapter 28.</p>	

XL Male Adapter		P x MPT		
Item Number	D1 (in)	D2 (in)	L (in)	A (in)
EPDM				
MB22510	2½"	2½" MPT	3.78	2.05
MB22520	3"	3" MPT	4.09	2.09
MB22530	4"	4" MPT	4.69	2.28



XL Female Adapter



P x FPT

Job Name

Job Location

P.O.#

Engineer

Contractor

Wholesaler

Merit Associate

CopperPress® Large Diameter Female Adapter is available in sizes 2½" x 2½" FPT – 4" x 4" FPT with an EPDM sealing element.

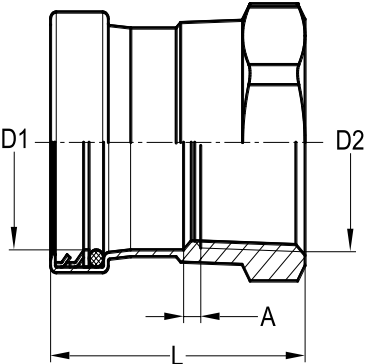
- **FIRST TO MARKET Visual Indicator Press Ring® (VIPR®)** - facilitates immediate identification of un-pressed connections.
- **Leak Before Press (LBP)** - in addition to the VIPR®, all sizes have leak before press technology, which guarantees a visual indication if the fitting is not pressed.
- **Applications:** HVAC, plumbing, municipal, mechanical and industrial applications.

CopperPress® Operational Parameters:
EPDM working pressure range from full vacuum to 300 psi for water.

CopperPress® Fitting Certifications
ICC-ES LC1002, NSF/ANSI/CAN 61, NSF/ANSI/CAN 372, IAPMO Z 1117.

CopperPress® Codes and Standards
ASME B31.1, B31.3, B31.9, IPC, IMC, IRC, UPC, UMC, CPC & CMC, City of Los Angeles Plumbing and Mechanical Codes, Massachusetts Regulation 248 CMR 10.00: Uniform State Plumbing Code, Massachusetts State Building Code 780 CMR Ninth Edition: Chapter 28.

XL Female Adapter				P x FPT
Item Number	D1 (in)	D2 (in)	L (in)	A (in)
EPDM				
MB22750	2½"	2½" FPT	3.54	0.67
MB22760	3"	3" FPT	3.98	0.75
MB22770	4"	4" FPT	4.37	0.59



Flange Adapter	P x Flange
	Job Name <input type="text"/>
	Job Location <input type="text"/>
	P.O.# <input type="text"/>
	Engineer <input type="text"/>
	Contractor <input type="text"/>
	Wholesaler <input type="text"/>
	Merit Associate <input type="text"/>

CopperPress® Flange Adapter is available in sizes 1" – 4" with an EPDM sealing element.

- **FIRST TO MARKET Visual Indicator Press Ring® (VIPR®)** - facilitates immediate identification of un-pressed connections.
- **Leak Before Press (LBP)** - in addition to the VIPR®, all sizes have leak before press technology, which guarantees a visual indication if the fitting is not pressed.
- **Applications:** HVAC, plumbing, municipal, mechanical and industrial applications.

CopperPress® Operational Parameters:

EPDM working pressure range from full vacuum to 300 psi for water.

CopperPress® Fitting Certifications

ICC-ES LC1002, NSF/ANSI/CAN 61, NSF/ANSI/CAN 372, IAPMO Z 1117.

CopperPress® Codes and Standards

ASME B31.1, B31.3, B31.9, IPC, IMC, IRC, UPC, UMC, CPC & CMC, City of Los Angeles Plumbing and Mechanical Codes, Massachusetts Regulation 248 CMR 10.00: Uniform State Plumbing Code, Massachusetts State Building Code 780 CMR Ninth Edition: Chapter 28.

Flange Adapter						P x Flange		
Item Number	D1 (in)	L (in)	A (in)	b (in)	D (in)	K (in)	d (in)	n (in)
EPDM								
MB60000	1"	2.28	1.34	0.63	4.33	3.11	0.63	4
MB60010	1¼"	2.28	1.14	0.63	4.53	3.50	0.63	4
MB60020	1½"	2.60	1.14	0.63	4.92	3.86	0.63	4
MB60030	2"	2.76	1.14	0.63	5.91	4.76	0.75	4
MB60040	2½"	2.83	1.10	0.69	7.09	5.51	0.75	4
MB60050	3"	3.25	1.34	0.81	7.48	5.98	0.75	4
MB60060	4"	3.74	1.34	0.89	9.06	7.52	0.75	8

