

## Unequal Tee

P x P x P



Job Name

Job Location

P.O.#

Engineer

Contractor

Wholesaler

Merit Associate

**CopperPress® Small Diameter Unequal Tee** is available in sizes ½" x ¾" – 2" x 1½" with an EPDM sealing element.

- **FIRST TO MARKET Visual Indicator Press Ring® (VIPR®)** - facilitates immediate identification of un-pressed connections.
- **Leak Before Press (LBP)** - in addition to the VIPR®, all sizes have leak before press technology, which guarantees a visual indication if the fitting is not pressed.
- **Applications:** HVAC, plumbing, municipal, mechanical and industrial applications.

### CopperPress® Operational Parameters:

EPDM working pressure range from full vacuum to 300 psi for water.

### CopperPress® Fitting Certifications

ICC-ES LC1002, NSF/ANSI/CAN 61, NSF/ANSI/CAN 372, IAPMO Z 1117.

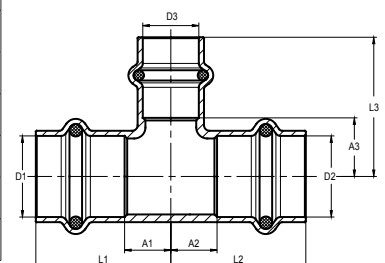
### CopperPress® Codes and Standards

ASME B31.1, B31.3, B31.9, IPC, IMC, IRC, UPC, UMC, CPC & CMC, City of Los Angeles Plumbing and Mechanical Codes, Massachusetts Regulation 248 CMR 10.00: Uniform State Plumbing Code, Massachusetts State Building Code 780 CMR Ninth Edition: Chapter 28.

## Unequal Tee

P x P x P

Item Number	D1 (in)	D2 (in)	D3 (in)	L1 (in)	A1 (in)	L2 (in)	A2 (in)	L3 (in)	A3 (in)
EPDM									
MB14120	½"	½"	¾"	1.71	0.91	1.71	0.91	1.54	0.59
MB14130	½"	½"	1"	2.22	1.42	2.22	1.42	1.73	0.79
MB14150	¾"	½"	½"	1.63	0.69	1.75	0.95	1.44	0.63
MB14160	¾"	½"	¾"	1.79	0.85	1.87	1.06	1.59	0.65
MB14170	¾"	¾"	½"	1.63	0.69	1.63	0.69	1.44	0.63
MB14180	¾"	¾"	1"	1.91	0.97	1.91	0.97	2.03	1.08
MB14195	1"	½"	½"	1.63	0.69	2.01	1.20	1.59	0.79
MB14200	1"	½"	¾"	1.79	0.85	2.13	1.32	1.73	0.79
MB14210	1"	½"	1"	1.91	0.97	2.22	1.42	1.73	0.79
MB14220	1"	¾"	½"	1.63	0.69	1.91	0.96	1.59	0.79
MB14230	1"	¾"	¾"	1.63	0.69	1.63	0.69	1.59	0.79
MB14240	1"	¾"	1"	1.79	0.85	1.79	0.85	1.73	0.79
MB14250	1"	1"	½"	1.79	0.85	2.01	1.06	1.73	0.79
MB14260	1"	1"	¾"	1.91	0.96	2.17	1.22	1.73	0.79
MB14270	1"	1"	1¼"	1.93	0.98	1.93	0.98	2.32	1.18
MB14290	1¼"	½"	1¼"	2.13	0.98	2.62	1.81	1.91	0.83



Unequal Tee (continued)									P x P x P
Item Number	D1 (in)	D2 (in)	D3 (in)	L1 (in)	A1 (in)	L2 (in)	A2 (in)	L3 (in)	A3 (in)
EPDM									
MB14300	1¼"	¾"	½"	1.77	0.63	2.19	1.24	1.93	1.12
MB14310	1¼"	¾"	¾"	1.87	0.73	2.28	1.34	1.97	1.02
MB14320	1¼"	¾"	1"	1.99	0.85	2.38	1.44	2.05	1.10
MB14330	1¼"	¾"	1¼"	2.13	0.98	2.44	1.50	1.97	0.83
MB14340	1¼"	1"	½"	1.77	0.63	2.09	1.14	1.93	1.12
MB14350	1¼"	1"	¾"	1.87	0.73	2.11	1.16	1.97	1.02
MB14360	1¼"	1"	1"	1.99	0.85	2.22	1.28	2.05	1.10
MB14365	1¼"	1"	1¼"	2.13	0.98	2.24	1.30	1.97	0.83
MB14370	1¼"	1¼"	½"	1.77	0.63	1.77	0.63	1.93	1.12
MB14380	1¼"	1¼"	¾"	1.87	0.73	1.87	0.73	1.97	1.02
MB14390	1¼"	1¼"	1"	1.99	0.85	1.99	0.85	2.05	1.10
MB14395	1½"	½"	1½"	2.61	1.16	2.91	2.11	2.76	1.30
MB14410	1½"	1"	¾"	2.13	0.67	2.36	1.42	2.09	1.14
MB14420	1½"	1"	1"	2.26	0.81	2.38	1.44	2.09	1.14
MB14430	1½"	1"	1½"	2.62	1.16	2.70	1.75	1.91	1.10
MB14435	1½"	1¼"	½"	1.93	0.47	2.15	1.00	1.91	1.10
MB14440	1½"	1¼"	¾"	2.13	0.67	2.28	1.14	2.09	1.14
MB14450	1½"	1¼"	1"	2.26	0.81	2.34	1.20	2.09	1.14
MB14460	1½"	1¼"	1¼"	2.38	0.93	2.54	1.40	2.24	1.10
MB14465	1½"	1¼"	1½"	2.62	1.16	2.78	1.63	2.76	1.30
MB14470	1½"	1½"	½"	1.93	0.47	1.93	0.47	1.91	1.10
MB14480	1½"	1½"	¾"	2.13	0.67	2.13	0.67	2.09	1.14
MB14490	1½"	1½"	1"	2.26	0.81	2.26	0.81	2.09	1.14
MB14500	1½"	1½"	1¼"	2.38	0.93	2.38	0.93	2.24	1.10
MB14515	2"	1"	1"	2.66	1.04	2.62	1.67	2.44	1.50
MB14520	2"	1¼"	1¼"	2.66	1.04	2.89	1.75	2.60	1.46
MB14530	2"	1½"	¾"	2.42	0.81	2.85	1.40	2.40	1.46
MB14540	2"	1½"	1"	2.54	0.93	2.93	1.48	2.44	1.50
MB14550	2"	1½"	1¼"	2.66	1.04	3.09	1.63	2.60	1.46
MB14560	2"	1½"	1½"	2.78	1.16	3.25	1.79	2.99	1.54
MB14570	2"	1½"	2"	2.99	1.38	3.43	1.97	3.15	1.54
MB14580	2"	2"	½"	2.42	0.81	2.42	0.81	2.52	1.71
MB14590	2"	2"	¾"	2.42	0.81	2.42	0.81	2.40	1.46
MB14600	2"	2"	1"	2.54	0.93	2.54	0.93	2.44	1.50
MB14610	2"	2"	1¼"	2.66	1.04	2.66	1.04	2.60	1.46
MB14620	2"	2"	1½"	2.78	1.16	2.78	1.16	2.99	1.54