

HOUSTON DISTRIBUTION CENTER

ADDRESS

4680 South Sam Houston Parkway West, Suite 120
Houston, TX 77053

HOURS OF OPERATION

8:00AM - 5:00PM CST
Monday - Friday

DC CONTACT

Houston DC Manager
Jeremy New
jnew@meritbrass.com

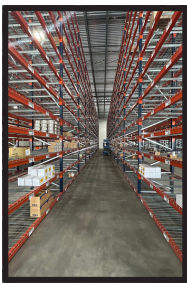
"My team and I are extremely excited to open the Houston DC.

We will leverage our amazing people, internal tools, and technology to provide legendary customer service on every order."



Jeremy New

Houston Distribution Center Manager



FLATBED PROGRAM

When LTL carriers won't bring you the pipe you need, we've got a **quick solution** for you! Get your Stainless Steel Pipe delivered **regularly, safely, and quickly** with our **WOW (Warehouse on Wheels)** flatbed program.

DID YOU KNOW? All product of Merit can be bundled with your flatbed!



LEARN MORE ABOUT OUR CAPABILITIES

WILL CALL

Need your items **fast**? Place a **will call** order and **pick it up the same day!** All will call orders will be processed in **2 hours**, so please notify your driver!

To place your order, please email contactus@meritbrass.com. If your will call order is **HOT**, please include **HOT WILL CALL** or **HOT W/C** in the subject line.

Will Call Pickup Hours: 8:00AM - 5:00PM CST
Will Call Order Cut-Off: 2:30PM CST

Our door is clearly marked on the outside with a **will call** sign.

DOWNLOAD OUR HOUSTON WILL CALL POLICY >>>



WATCH OUR VIDEO DETALING OUR WILL CALL POLICIES & PROCEDURES

PRESS FITTINGS & VALVES

Want to **save 30-50% in labor costs**? Our press technology is a sustainable and innovative solution that is designed to help you complete projects safely, on time, and in full.

[CarbonPress® Fittings](#)

[CopperPress® Fittings & Valves](#)

[StainlessPress® Fittings & Valves](#)

[EXPLORE OUR ENTIRE PRESS OFFERING >>>](#)



FOR PRESS TRAININGS & CERTIFICATIONS



STAINLESS STEEL PIPE

Do you have a project or job that requires **high quality pipe** that **meets ASTM specifications** offers **excellent strength, durability**, and **resistance to corrosion**? Not only does our stainless steel pipe meet these requirements, but it also **prevents contamination** and **retains a lustrous appearance over a long period of time**.

Size Range: 1/2" - 12" & 16"
Type 304/L & 316/L
Welded & Seamless
Schedules 10, 40, and 80



 **DOWNLOAD**
OUR PIPE BROCHURE TODAY

 **CONTACT US TODAY** 

800.726.9800
CONTACTUS@MERITBRASS.COM

TAKE A TOUR

 **WATCH NOW**

