

LEADED BRASS BALL VALVES

2-PC Brass Ball Valve - Full Port

Description

This specification covers 2-PC Leaded Brass Ball Valves used in piping applications as determined by Engineering as a function of what is being transported in the system, pressure ratings, temperature of material and line pressure.

Specifications

2-PC Brass Valves (Leaded) provided by Merit Brass Co. are full port and designed to 300 psi Non-Shock WOG (125 psi SWP). The housing is Forged Brass (C37700) with PTFE seats. Sizes 0.25" - 2" have a Chrome Plated Brass Ball, and Sizes 2.5" - 4" have a Stainless Steel (304 SS) ball. This product is suitable for above, or below ground, applications.



Size Range

- 1/4" - 4"

Ends

- NPT

Project Information	Approval Stamp
Project Name:	Approved
Project Location:	Approved As Noted
Project Contractor:	Not Approved
Project Engineer:	Remarks:
Project Distributor:	
Project Rep:	
Submittal Date:	
Notes 1:	
Notes 2:	

For the Master Carton (Box) Quantity List, please visit meritbrass.com. Some items not shown may be available upon request. Some items and sizes may be discontinued when stock is depleted and may require a minimum order quantity. Certain inventory limitations may apply. For list prices in Excel, please download by logging onto meritbrass.com. Contact our Sales Team for details at contactus@meritbrass.com. Every precaution has been taken in preparing this submittal, however, Merit Brass Company cannot be held responsible for typographical errors or omissions.

⚠ WARNING: This product can expose you to Lead, which is known to the State of California to cause cancer and birth defects or other reproductive harm. For more information go to www.P65Warnings.ca.gov. This product is not for use in potable water.

LEADED BRASS BALL VALVES

2-PC Brass Ball Valve - Full Port



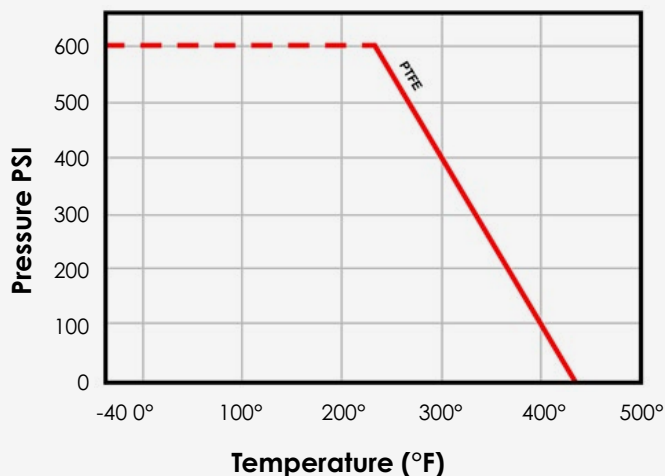
Design Features

- Body: Forged Brass
- Port: Full
- Design: Two Piece Body
- Handle: Locking Device
- Ball: Chrome Plated Brass
- Seats: PTFE
- Stem: Blow-Out Proof
- 1/4" – 2" Rated: 600PSI Non-Shock WOG
125PSI SWP
- 2-1/2" – 4" Rated: 600PSI Non-Shock WOG
125PSI SWP

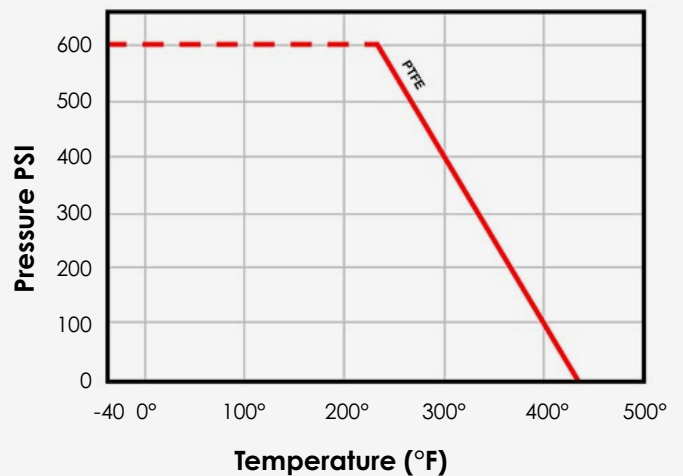
Applicable Standards

- Threaded Ends ANSI B1.20.1
- Conforms to MSS-SP-110
- CSA Gas Approved to 2" (IPS Only)
- UL/FM Approved

Pressure/Temperature Size Ranges 1/4" - 2"



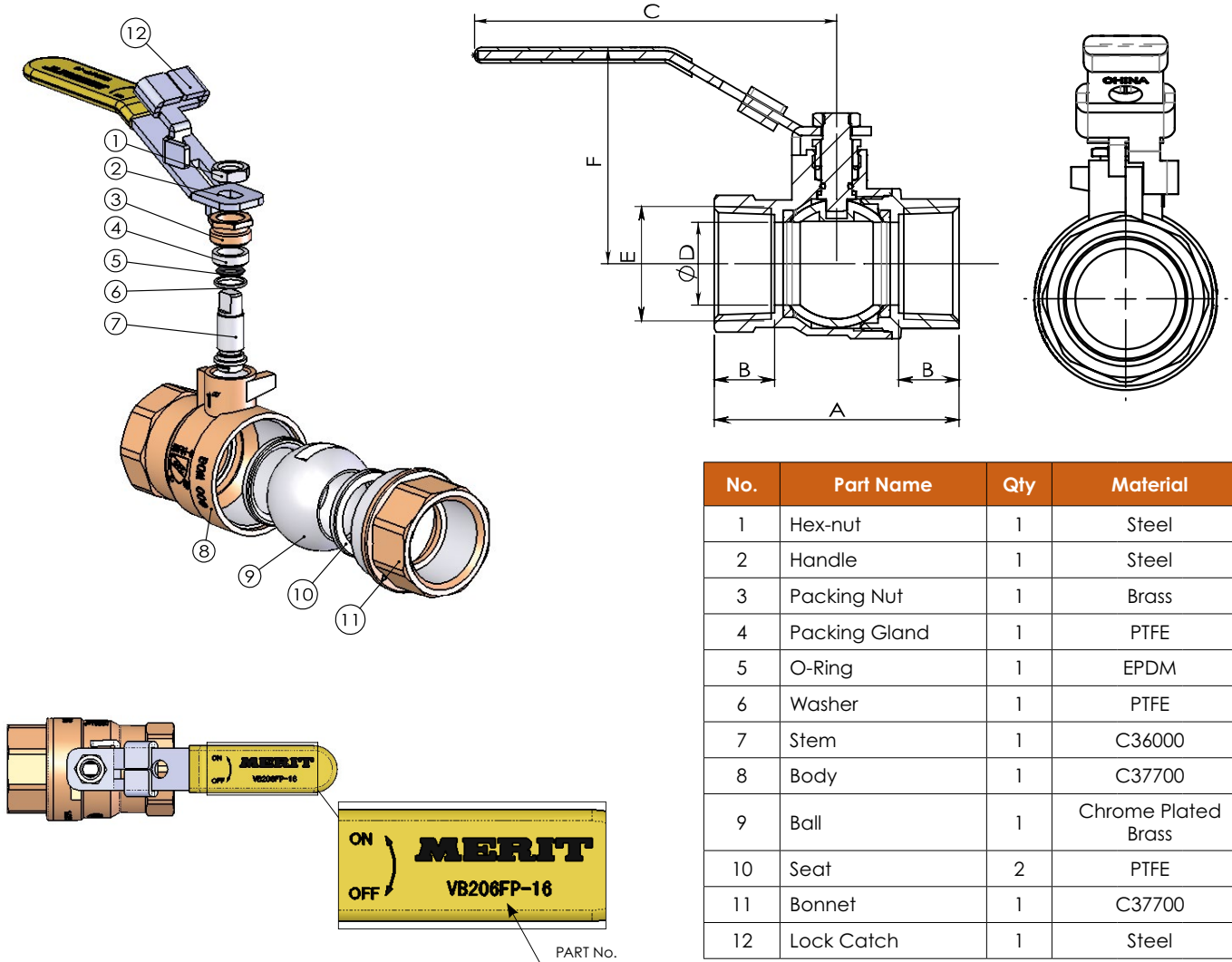
Pressure/Temperature Size Ranges 2-1/2" - 4"



⚠ WARNING: This product can expose you to Lead, which is known to the State of California to cause cancer and birth defects or other reproductive harm. For more information go to www.P65Warnings.ca.gov. This product is not for use in potable water.

LEADED BRASS BALL VALVES

Diameters: 1/4" – 2"



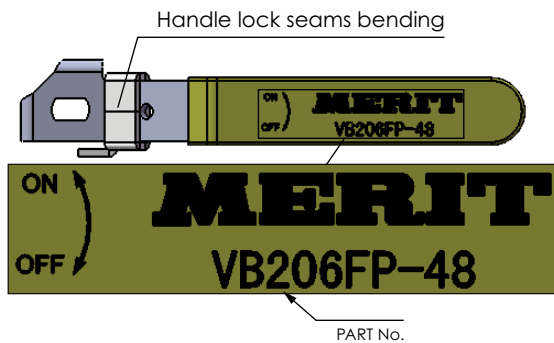
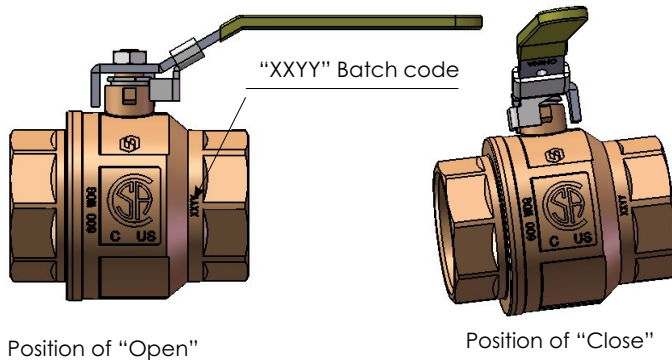
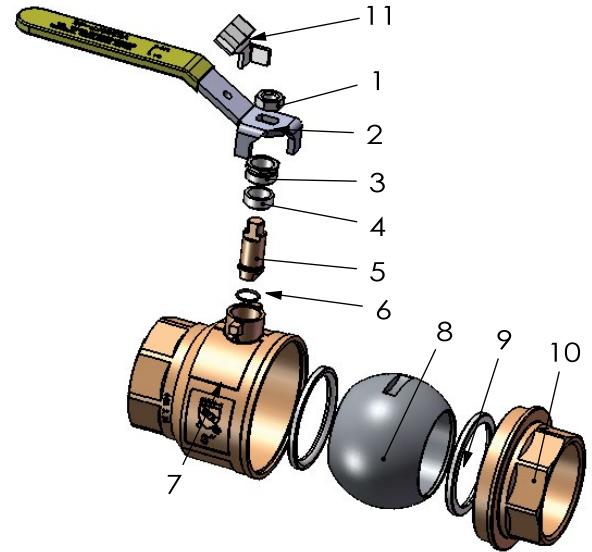
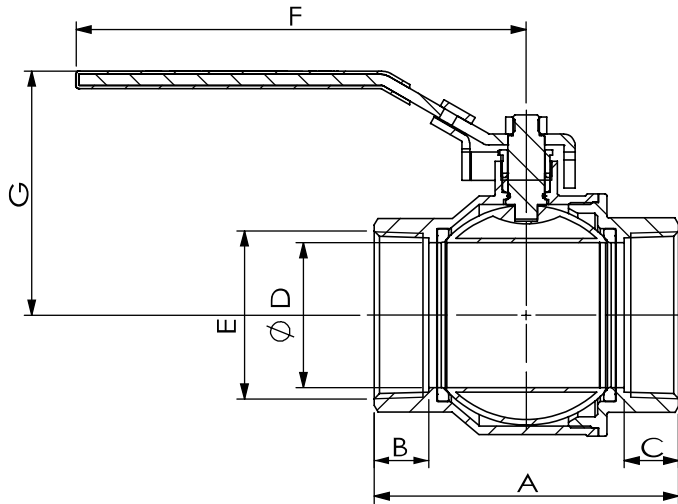
No.	Part Name	Qty	Material
1	Hex-nut	1	Steel
2	Handle	1	Steel
3	Packing Nut	1	Brass
4	Packing Gland	1	PTFE
5	O-Ring	1	EPDM
6	Washer	1	PTFE
7	Stem	1	C36000
8	Body	1	C37700
9	Ball	1	Chrome Plated Brass
10	Seat	2	PTFE
11	Bonnet	1	C37700
12	Lock Catch	1	Steel

Size	A (in)	B (in)	C (in)	D (in)	E	F (in)	Weight (lb)	Part No.
1/4"	1.732	0.453	3.15	Ø 0.394	1/4-18NPT	1.843	0.26	VB206FP-04
3/8"	1.732	0.453	3.15	Ø 0.394	3/8-18NPT	1.843	0.26	VB206FP-06
1/2"	2.047	0.551	3.15	Ø 0.512	1/2-14NPT	1.937	0.37	VB206FP-08
3/4"	2.303	0.571	4.134	Ø 0.709	3/4-14NPT	2.291	0.55	VB206FP-12
1"	2.795	0.689	4.134	Ø 0.945	1-11.5NPT	2.469	0.88	VB206FP-16
1-1/4"	3.15	0.689	4.921	Ø 1.201	1 1/4-11.5NPT	3.039	1.36	VB206FP-20
1-1/2"	3.504	0.709	4.921	Ø 1.457	1 1/2-11.5NPT	3.217	1.88	VB206FP-24
2"	4.193	0.748	7.087	Ø 1.949	2-11.5NPT	3.72	3.44	VB206FP-32

⚠ WARNING: This product can expose you to Lead, which is known to the State of California to cause cancer and birth defects or other reproductive harm. For more information go to www.P65Warnings.ca.gov. This product is not for use in potable water.

LEADED BRASS BALL VALVES

Diameters: 2-1/2" – 4"



No.	Part Name	Qty	Material
1	Hex-nut	1	Steel
2	Handle	1	Steel
3	Packing Nut	1	Brass
4	Packing Gland	1	PTFE
5	Stem	1	C3600
6	O-Ring	1	EPDM
7	Body	1	C3770
8	Ball	1	Stainless Steel
9	Seat	2	PTFE
10	Bonnet	1	C3770
11	Lock Catch	1	Steel

Size	A (in)	B (in)	C (in)	D (in)	E	F (in)	G (in)	Weight (lb)	Part No.
2-1/2"	5.551	1.063	1.603	Ø 0.25	2 1/2-8NPT	9.449	4.744	7.32	VB206FP-40
3"	6.378	1.142	1.142	Ø 3.031	3-8NPT	9.449	5.118	10.11	VB206FP-48
4"	7.543	1.201	1.201	Ø 3.937	4-8NPT	9.449	5.866	16.91	VB206FP-64

⚠ WARNING: This product can expose you to Lead, which is known to the State of California to cause cancer and birth defects or other reproductive harm. For more information go to www.P65Warnings.ca.gov. This product is not for use in potable water.



This image shows a single sheet of white paper with horizontal ruling lines. The lines are evenly spaced and run across the width of the page. There are no margins, text, or other markings on the paper.

LOCATIONS

SPARKS DISTRIBUTION CENTER
200 Vista Boulevard Suite #106
Sparks, NV 89434

DALLAS DISTRIBUTION CENTER
10614 King William Drive
Dallas, TX 75220

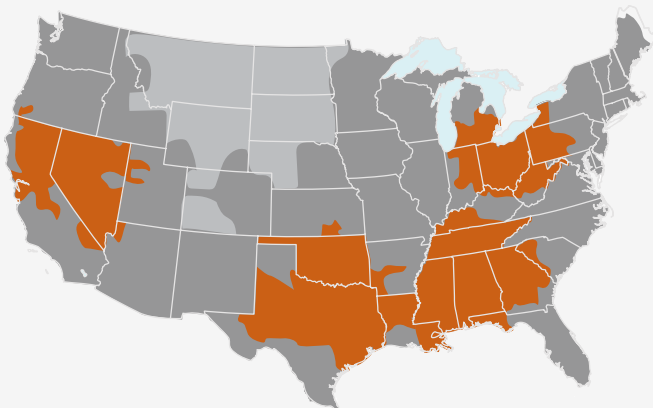
CLEVELAND HEADQUARTERS
One Merit Drive/PO Box 43127
Cleveland, OH 44143

BIRMINGHAM DISTRIBUTION CENTER
220 Oxmoor Court
Birmingham, AL 35209

HOUSTON DISTRIBUTION CENTER
4680 S. Sam Houston Pkwy W, Suite 120
Houston, TX 77053

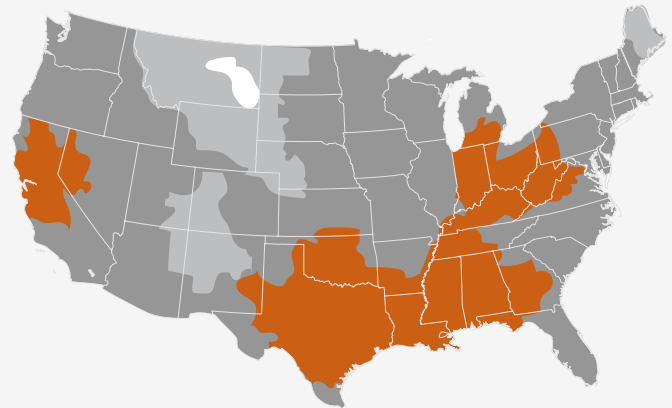
SHIPPING TIMES

UPS



1 Day 2 Days 3 Days

FedEx



1 Day 2 Days 3 Days 4 Days

*FedEx is Merit's Primary Carrier

LEARN MORE



800.726.9800

Follow us on      

Merit Brass Headquarters Has An ISO 9001:2015 Registered Quality Management System

www.meritbrass.com
www.mbwebxpress.com
contactus@meritbrass.com