



DIRECTING THE FLOW OF *Quality*

PRESS OFFERING



CarbonPress®
By Merit Brass Co.

CopperPress®
By Merit Brass Co.

StainlessPress®
Isotubi-USA, By Merit Brass Co.

MeritPress™
By Merit Brass Co.

LEARN MORE



800.726.9800

Follow us on [f](#) [X](#) [in](#) [@](#) [v](#) [p](#)

Merit Brass Headquarters Has An ISO 9001:2015 Registered Quality Management System

www.meritbrass.com
www.mbwebxpress.com
contactus@meritbrass.com

PRODUCTS OF MERIT

| Pipe Nipples | | |
|--|---------------------------|-----------|
| Red Brass (Standard/Extra Heavy) ASTM B687** | | 1/8" – 6" |
| Chrome Plated Red Brass ASTM B687** | | 1/8" – 6" |
| Stainless Steel (304/L & 316/L) ASTM A733 | Schedule 40 Welded | 1/8" – 8" |
| | Schedule 40 & 80 Seamless | 1/8" – 3" |
| Aluminum (6061-40) | | 1/8" – 4" |

| Pipe | | |
|---|-------------------------------|------------|
| Red Brass ASTM B43** | Standard H58 Hard Temper | 1/8" – 6" |
| | Standard 061 Annealed Temper | 1/8" – 4" |
| | Extra Heavy H58 Hard Temper | 1/8" – 4" |
| | Chrome Plated H58 Hard Temper | 1/4" – 4" |
| Stainless Steel (304/L & 316/L) ASTM A312/SA312 | Welded Schedule 10 | 1/2" – 12" |
| | Schedule 40 Welded | 1/8" – 12" |
| | Schedule 80 Welded | 1/8" – 4" |
| | Schedule 40 Seamless | 1/8" – 4" |
| | Schedule 80 Seamless | 1/8" – 4" |
| Aluminum ASTM B241 (6061-T6) - Standard | | 1/8" – 6" |

| Tubing | | |
|--|---------------------------|-----------|
| Stainless Steel (304/L & 316/L) (0.035, 0.049, 0.065, 0.080, 0.095, 0.109 Walls) | Seamless (ASTM A213/A269) | 1/4" – 1" |
| | Welded (ASTM A249/A269) | 1/4" – 1" |

| Syphons | |
|---------------------------------|------|
| Brass** | 1/4" |
| Stainless Steel (304/L & 316/L) | 1/4" |

| Tape | |
|----------------------------------|-------------|
| Stainless Steel PTFE Thread Tape | 1/2" & 3/4" |

| Valves | |
|-------------------------------|-------------|
| Stainless Steel - K Series | 1/2" – 6" |
| Stainless Steel - V Series | 1/2" – 3" |
| Brass - Leaded* & Lead-Free** | 1/4" – 4" |
| Instrumentation | 1/4" – 1/2" |

| Tube Fittings | |
|-----------------|-----------|
| Stainless Steel | 1/8" – 1" |

- **Threading Capabilities**
 - » NPT (National Pipe Taper)
 - » NPTF (National Pipe Taper Fuel & Oil)
 - » NPSL (National Pipe Straight Locknut)
 - » NPSM (National Pipe Straight Mechanical)
 - » NPSH (National Pipe Straight Hose)
 - » BSPT (British Standard Pipe Taper)
- **Manufacturing Capabilities**
 - » Plain Roller Cut
 - » Plain Square Cut
 - » Plain Ream & Chamfer
 - » Groove (Roll or Cut)
 - » Per Print Bending (1/8" - 1" Diameter)
 - » Per Print O.D. & I.D. Machining

| Fittings | | | |
|---|---|------------------------------|-------------|
| Brass Threaded ASTM B584 Leaded* Lead-Free** | Domestic (125LB & 250LB) | | 1/8" – 6" |
| | Import (125LB & 250LB) | | 1/8" – 4" |
| | Chrome Plated (125LB) | | 1/8" – 2" |
| Brass Barstock | Domestic (125LB) – Leaded* & Lead-Free** | | 1/8" – 3/4" |
| Stainless Steel (304 & 316) | Cast 150LB (Standard) (AISI 304 & 316) | | 1/8" – 4" |
| | Cast 150LB MSS SP-114 | Threaded | 1/8" – 4" |
| | | Socket Weld | 1/2" – 2" |
| | Barstock 1000LB ASTM A182 or A479 | | 1/8" – 3" |
| | 3000LB (Threaded & Socket Weld) ASTM A182 | | 1/8" – 3" |
| | Buttweld (Schedules 10 & 40) ASTM A403 | | 1/2" – 12" |
| | MSS Type A & C Stub Ends ASTM A403 | Schedule 10 | 1/8" – 3" |
| | | Schedule 40 (Type A Only) | 1/2" – 8" |
| Carbon Steel Forged A105-N | 2000LB Threaded | | 1/4" – 2" |
| | 3000LB Threaded | | 1/8" – 3" |
| | 3000LB Socket Weld | | 1/2" – 3" |

| Outlets | | |
|---------------------------------|------------------------|-----------|
| Stainless Steel (304/L & 316/L) | Threaded | 1/8" – 4" |
| | Socket Weld | 1/2" – 4" |
| | Buttweld (Schedule 40) | 1/2" – 4" |
| Carbon Steel Forged A105-N | Threaded | 1/2" – 4" |
| | Socket Weld | 1/2" – 4" |
| | Buttweld (Schedule 40) | 1/2" – 4" |

| Flanges | | | |
|---|--|-----------------|--------------|
| Brass - Import & Domestic Leaded* & Lead-Free** | Companion (Threaded) (150LB & 300LB) ASTM B584 | 1/2" – 6" | |
| Stainless Steel | ANSI 150LB & 300LB (304/L & 316/L) ASTM A182 | 1/2" – 12" | |
| | MSS 150LB (304 & 316) ASTM A351 | 1/2" – 10" | |
| | Plate (304/L & 316/L) (150LB) | Tube OD Slip On | 1-1/2" – 12" |
| | | Blind | 1" – 12" |
| | | IPS Slip On | 1" – 12" |
| Ductile Iron Backup ASTM A536 & Galvanized | | 1/2" – 12" | |

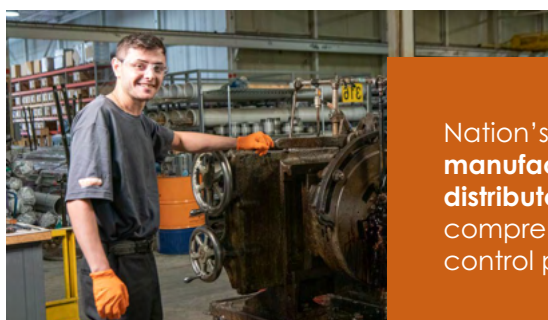
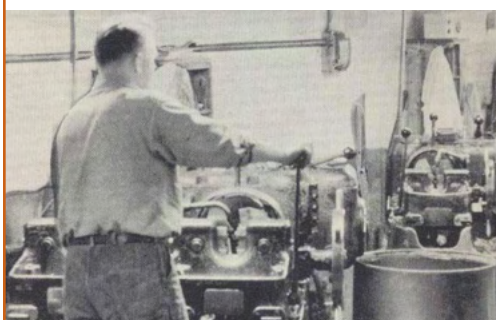
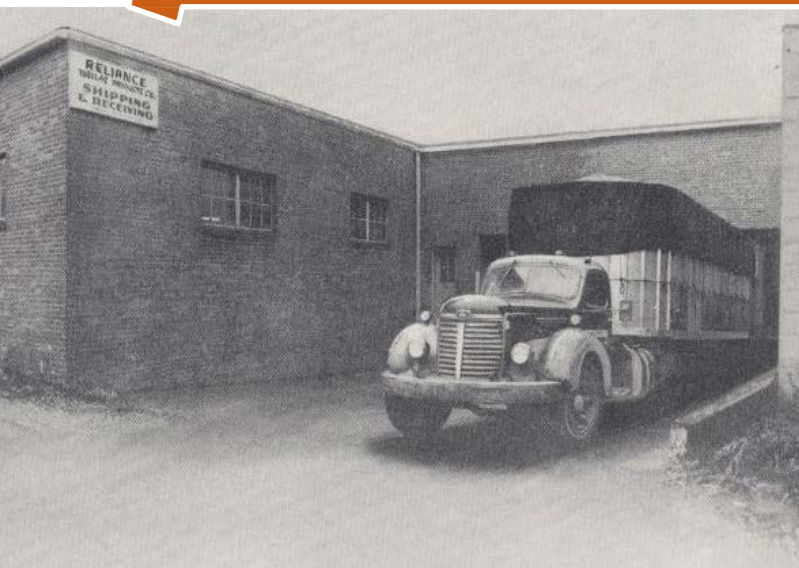
| Engineered Products | |
|---|---|
| CopperPress <small>ASTM B111</small> | Fittings 1/2" – 4" and Valves 1/2" – 2" (EPDM) |
| CarbonPress <small>ASTM A182</small> | Fittings 1/2" – 4" (HNBR, EPDM & FKM) |
| StainlessPress <small>ASTM A312</small> | Fittings and Valves 1/2" – 2" (HNBR, EPDM & FKM) |
| MeritPress <small>ASTM A105</small> | Fittings 1/2" – 2" (EPDM). See CopperPress® for valves and large OD fittings. |

Every precaution has been taken in preparing this sheet. Merit Brass Company cannot be held responsible for omissions or typographical errors.

* **WARNING:** This product can expose you to Lead, which is known to the State of California to cause cancer and birth defects or other reproductive harm. For more information, go to www.P65Warnings.ca.gov. Leaded product is not for use in potable water.

** Conforms with lead content requirements for lead-free plumbing as defined by the U.S. Safe Drinking Water Act. Certified <=0.25 weighted average % lead.

Family Owned & Operated Since 1937



Nation's **leading** pipe nipple **manufacturer and master distributor** of the most comprehensive offering of flow control piping **connections**

Six Convenient Locations across the United States (Birmingham, Cleveland, Dallas, Houston, Long Beach, Sparks)



Our Vision is to set the industry standard for the highest **TOTAL** value of goods & services

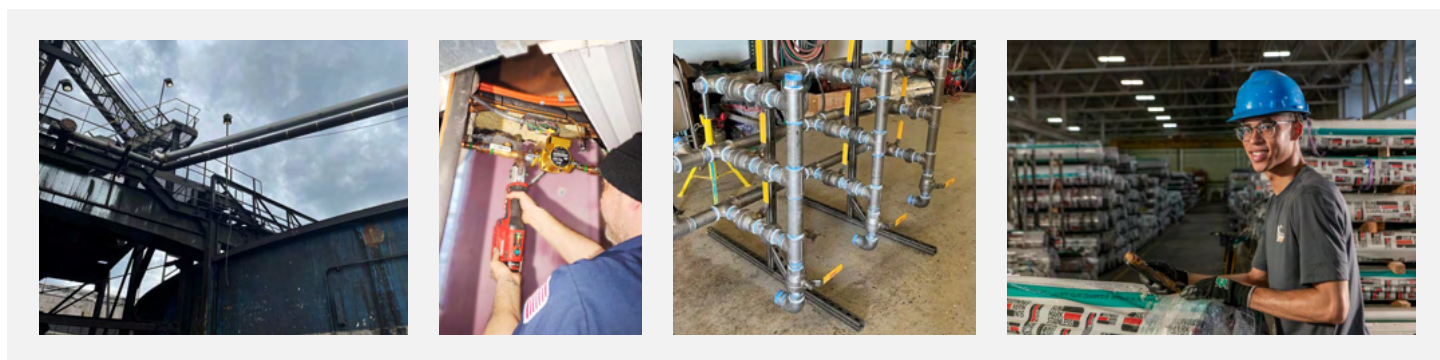
INNOVATIVE SOLUTIONS

Driven to Provide You Value

Merit Brass is a family-owned and operated business headquartered in Cleveland, Ohio. Founded by Lou Schlessinger and Frank Lifshitz in 1937, Merit is the nation's leading pipe nipple manufacturer and master distributor of flow control piping connections. Our goal is to provide a safe and sustainable infrastructure across all vertical markets (both plumbing and industrial).

Merit Brass' legacy has been built on our commitment to quality, our investment in products that offer our customers with solutions that drive value, and our dedication to the success of our associates & their families through Merit's continued vision.

Merit brings to its customers in-depth market intelligence as part of our partnering relationship because we understand how that insight impacts your corporate initiatives. Our long-term supply chain partners fortify our ability to serve your PVF needs around pipe fittings, pipe flanges, pipe, tubing, valves, and thread tape.



Today, Merit Brass continues to live our legacy of addressing industry needs. In 2022, Merit acquired Supply Source Products, a master distributor of press fittings and valves in carbon, copper, and stainless steel. Merit Brass is proud of those that worked diligently to create our legacy and we celebrate the talent that we have today. Our team is comprised of passionate individuals who possess industry knowledge and experience coupled with a drive for success through improvement.

Our commitment to your Merit Experience is to provide trouble-free and on-time service from order inception all the way through shipment with over 200 associates across six locations. Today, Merit's ownership includes the third generation, Marc Schlessinger (CEO) and Alan Lipp (CEO), with its fourth generation, Kyle Schlessinger and Kevin Lipp, actively working in their careers. Merit's ownership alongside Darren Hilliard (President) continues to live out our legacy of serving our wholesale distribution partners by helping you succeed with high quality piping system connections, our knowledge and education, and our decades of experience.

Streamlining Project Planning & Execution

Save **up to 30%** in project planning, cost & execution



Supporting Distribution Growth Strategies Through Vertical Market Relationship Building

Training at Every Stage of the Process
with Your Success in Mind



Saves Time, Money & Labor

No Soldering or Burn Permit Needed. Shorter
Lay Lengths for Those Tighter Spaces



MERIT'S PRESS OFFERING

Merit Brass has over 85 years of experience in serving the PVF (Pipe, Valve & Fitting) industry with high quality products to support a wide variety of Applications and Industries. As Merit continues to look to the future, and the continued growth of our Company, we have identified Press Fittings as one of the next steps on the path to our next 85 years.

After listening to the voice of customers across varying applications, Merit's team of engineers developed a solution for improving the installation process. With the design of our Visual Indicator Press Ring® (VIPR®) it makes it easy for the installer to identify any unpressed joints in the system (the VIPR® can be easily removed after the fitting has been pressed), cutting down on the number of errors that can occur on the job site. Each press fitting and valve up to 2" has a color coded VIPR® that identifies the sealing element and helps the Installer ensure the correct sealing element is located in the correct part of the installation. Fittings and valves 2.5" and above have an easily removable identification tag, which is also color coded to match the sealing element.

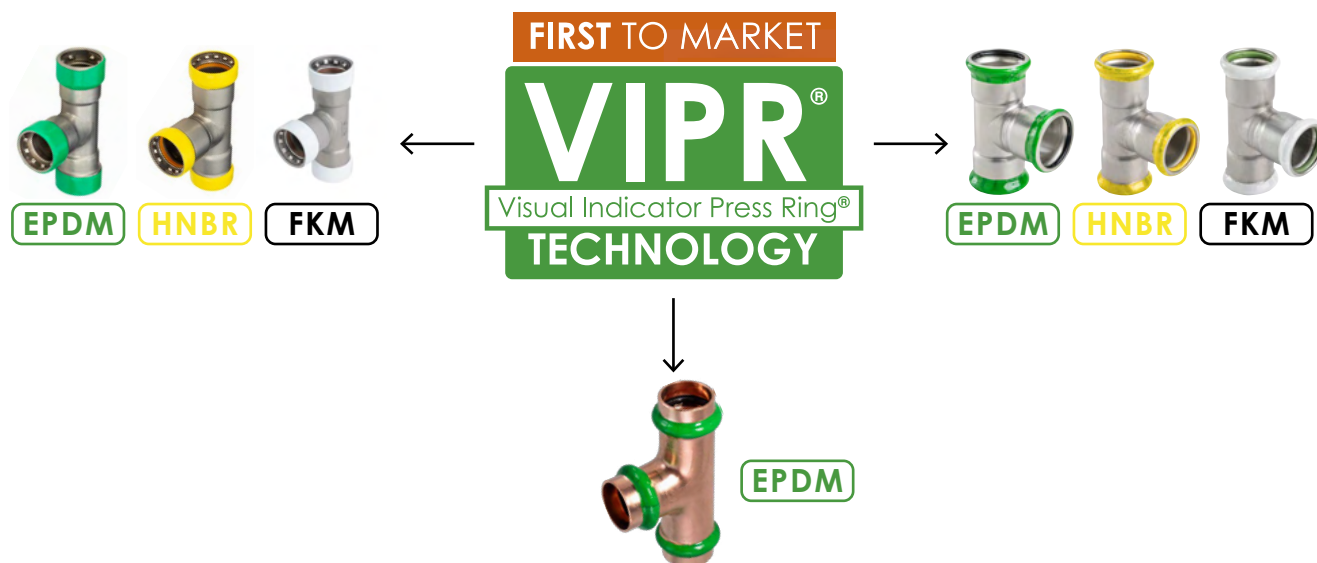
Merit's press fitting and valve offering includes: **CarbonPress®**, **CopperPress®**, **StainlessPress®** and **MeritPress™**. Our press technology is focused on quality, safety, reliability and ease of use. Press joints can be readily achieved using several commercially available pressing tools. Several press fittings are available with male or female threaded ends to enable connectivity with threaded piping systems. Conversion to flanged systems can be made with ANSI Class 125/150 Flange Adapters. Where breaks in pipe work may be needed, the union coupling can be used for quick and easy connections/disconnections. Weld and grooved adapters are available to transition to welded or grooved piping systems.

Merit's press fittings and valves also incorporate a unique sealing element design that provides an important Leak-Before-Press (LBP) feature. When the fitting and pipe are pressed together, they deform to create a durable permanent pipe joint, while the sealing element compresses to make the joint leak-proof. An unpressed fitting allows a leak path for liquids and gases, thereby enabling an installer to identify the unpressed fittings easily. The Leak-Before-Press (LBP) feature significantly reduces the chance of unpressed joints, helping to ensure a leak-free system.

- » **CopperPress®** Fittings ½" – 4" and Valves ½" – 2" (EPDM)
- » **StainlessPress®** Fittings and Valves ½" – 2" (HNBR, EPDM, FKM)
- » **CarbonPress®** Fittings ½" – 4" (HNBR, EPDM, FKM)
- » **MeritPress™** Fittings ½" – 2" (EPDM). See CopperPress® for valves and large OD fittings.



FEATURES & BENEFITS



Packaged in **common industry quantities**



Most comprehensive package which can be bundled with pipe, tubing, valves, flanges, pipe nipples and more

Box, bag and VIPR® are color-coordinated to the sealing element

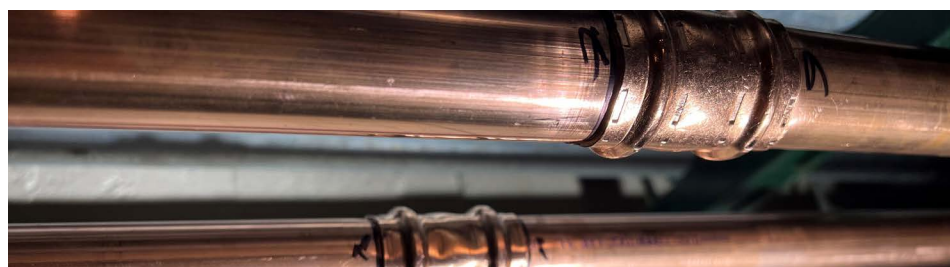
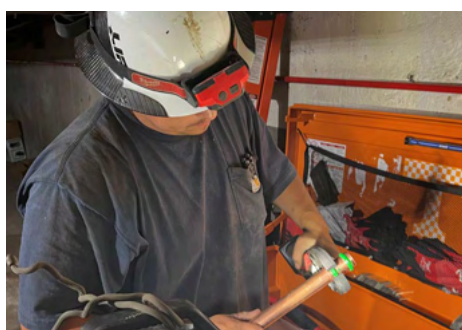
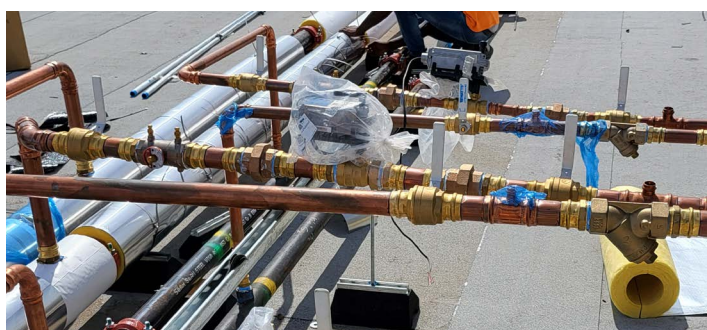
Engineered sealing elements are designed to leak before they are pressed, giving a visual indication of a connection that has not been pressed.



All sealing elements are factory **installed & lubricated**

CopperPress®

By Merit Brass Co.



SEALING APPLICATIONS


Fitting Housing

Fittings shall be constructed of UNS C12200 copper or equivalent.

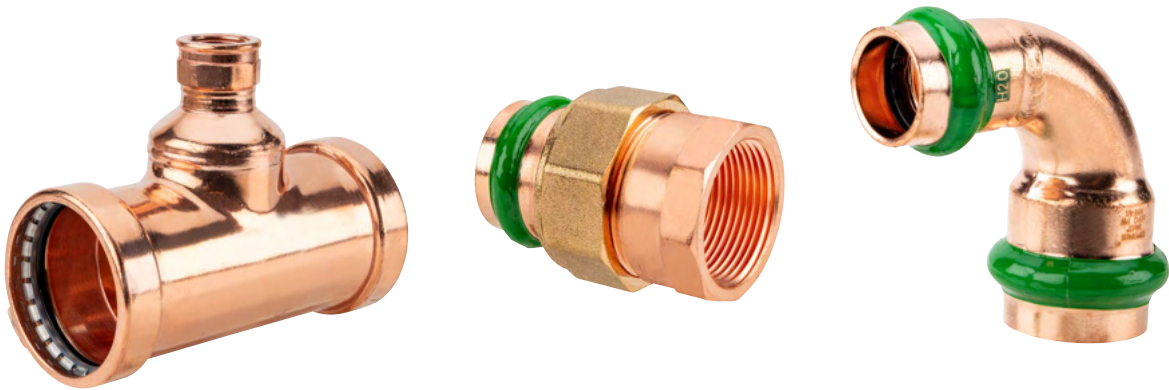
Working Pressure

Working Pressure Range from Full Vacuum 300 psi.

SEALING ELEMENT

| EPDM SEALING ELEMENT | | |
|-----------------------------|---|--|
| EPDM | Ethylene-propylene-diene monomer |  |
| Color | Black | |
| Temperature | 0°F to 250°F | |
| Common Applications* | Potable Water | |
| | Hydronic Heating (W/ Glycol) | |
| | Chilled Water | |
| Manufacturing Process | Synthetically manufactured & peroxide-cured | |
| Benefits of Sealing Element | Excellent oxidation resistance | |

**Details of approved applications may be found on page 12.*



COPPERPRESS® FITTINGS & VALVES

Benefits & Features

- Over 350+ Fittings (0.5" – 4") made from UNS C12200 Copper Tube
- Leak Before Press (LBP) Feature on all Fittings/Valves (0.5" – 4")
- Visual Indicator Press Ring® (VIPR®) on Sizes up to 2"
 - » 2.5" and above has Removable Tag
- Bag/Box is Color Coded to match the VIPR® and Sealing Element for Ease of Identification
 - » Green = EPDM
- Fluid Media Type is Color Coded on the Fitting
 - » Green "H2O" for EPDM
- Can be Installed with all Major Press Tools/Jaws
 - » 0.5" – 2" Press Profile = CTS-V (same as Copper ProPress)
 - » 2.5" – 4" Press Profile = CTS-Grab Ring (same as Copper ProPress)
- 50-year Warranty on CopperPress® Fittings
- 5-year Warranty on CopperPress® Valves

Pressure & Temperature

- Working Pressure: Range from Full Vacuum to 300 psi
- Temperature Range: 0°F – 250°F



TOOLING REFERENCE GUIDE

| CopperPress® Tools, Kits, Jaws and Rings | | | | | | | |
|--|------------------|---|------------|---------------|---------------------------------------|---------|-----------------|
| Size | Milwaukee Part # | Tooling Name | Adapter | Ridgid Part # | Tooling Name | Adapter | Profile |
| 0.5" - 4" | 2773-20 | M18 Force Logic Press Tool | | 67063 | RP 350 Press Tool | | |
| 0.5" - 2" | 2773-22 | M18 Force Logic Press Tool w/Jaws (0.5" - 2") | | 67053 | RP 350 Press Tool w/Jaws (0.5" - 2") | | |
| 0.5" | 49-16-2650 | 0.5" M18 Jaw | | 76652 | 0.5" Press Jaw | | CTS - V |
| 0.75" | 49-16-2651 | 0.75" M18 Jaw | | 76657 | 0.75" Press Jaw | | CTS - V |
| 1" | 49-16-2652 | 1" M18 Jaw | | 76662 | 1" Press Jaw | | CTS - V |
| 1.25" | 49-16-2653 | 1.25" M18 Jaw | | 76667 | 1.25" Press Jaw | | CTS - V |
| 1.5" | 49-16-2654 | 1.5" M18 Jaw | | 76672 | 1.5" Press Jaw | | CTS - V |
| 2" | 49-16-2655 | 2" M18 Jaw | | 76677 | 2" Press Jaw | | CTS - V |
| 2.5" | 49-16-2656 | 2.5" M18 Ring | 49-16-2659 | 20543 | 2.5" Press Ring | 21878 | CTS - Grab Ring |
| 3" | 49-16-2657 | 3" M18 Ring | 49-16-2659 | 20548 | 3" Press Ring | 21878 | CTS - Grab Ring |
| 4" | 49-16-2658 | 4" M18 Ring | 49-16-2659 | 20553 | 4" Press Ring | 21878 | CTS - Grab Ring |
| 2.5" - 4" | 49-16-2659 | Ring Jaw 1 | | 21878 | V2 Press Ring Actuator | | |
| 2.5" - 4" | 49-16-2690 | M18 Press Ring Kit (2.5" - 4") | | 20483 | 2.5" - 4" Press Rings and V2 Actuator | | |

CopperPress®, by Merit Brass Co. products can be used with Milwaukee, REMS, Ridgid, and Rothenberger tools with the associated Jaws for K, L, and M Copper Tube. Please contact Merit Brass Co. for additional information.

SMALL DIAMETER COPPER END PRESS BALL VALVE – SIZES: ½" – 2"

CopperPress® Ball Valve Codes & Standards

- ASME B31.1 Power Piping, B31.3 Process Piping, B31.9 Building Services Piping
- ASME A112.4.14/CSA B125.14 Manually and Automatically Operated Valves for Use in Plumbing Systems
- IPC, IMC, UPC, UMC
- CPC & CMC (California Plumbing and Mechanical Codes)
- City of Los Angeles Plumbing and Mechanical Codes
- Massachusetts Regulation 248 CMR 10.00: Uniform State Plumbing Code
- Massachusetts State Building Code 780 CMR Ninth Edition: Chapter 28

CopperPress® Ball Valve Certifications

- ICC-ES LC 1002 Press Connection Fittings for Potable Water Tube and Radiant Heating Systems
- IAPMO/ANSI/CAN Z1157 Ball Valves
- NSF/ANSI/CAN 61 Drinking Water System Components – Health Effects
- NSF/ANSI/CAN 372 Drinking Water System Components – Lead Content

Design Features

Designed to be used with ASTM B88 Type K, L and M ½" – 2" copper tubing in the hard-drawn condition and soft copper tubing in sizes ½" - 1¼".

VIPR® (Visual Indicator Press Ring®) facilitates immediate identification of un-pressed connections

Suitable for installation in most plumbing and heating systems including hydronic heating, low pressure steam (15 psi max), and potable water

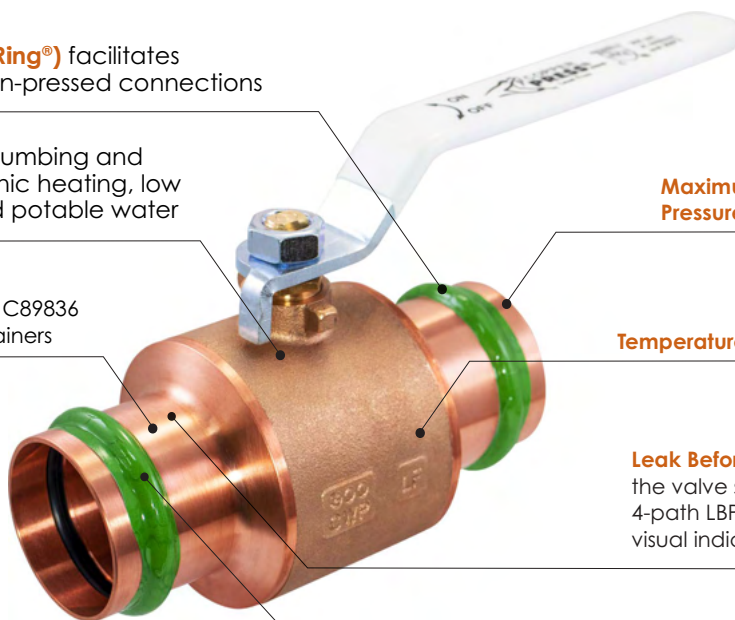
Lead-Free Construction - Cast C89836 Bronze Body with Copper Retainers

Maximum Working Pressure: 300 psi

Temperature Range: 0°F to 250°F

Leak Before Press in addition to the VIPR®, the valve sealing element includes a 4-path LBP system that guarantees a visual indication if not pressed

Copper Ends protect against dezincification and stress corrosion cracking



APPROVED APPLICATIONS



| Types Of Service | | System Operating Conditions | | | CopperPress® Seal |
|-----------------------|--------------------------|--|--------------|--------------|-------------------|
| | | Notes | Pressure | Temperature | EPDM |
| Fluids/ Water | Chilled Water | Ethylene Glycol/Propylene Glycol | 300 psi | 32°F - 250°F | ✓ |
| | Cooling Water | Up to 50% Ethylene Glycol or Propylene Glycol Solution | 300 psi | 32°F - 250°F | ✓ |
| | Hot & Cold Potable Water | | 300 psi | 32°F - 250°F | ✓ |
| | Hydronic Heating | Ethylene Glycol/Propylene Glycol | 300 psi | 32°F - 250°F | ✓ |
| | Low-Pressure Steam | | Up to 15 psi | 248°F | ✓ |
| | Rainwater/Gray Water | | 300 psi | 32°F - 250°F | ✓ |
| Fuel, Oil & Lubricant | Ethanol | Pure Grain Alcohol | 300 psi | 32°F - 250°F | ✓ |
| Gas | Argon | Welding Use | 300 psi | Ambient | ✓ |
| | Carbon Dioxide - CO2 | Dry | 300 psi | 32°F - 250°F | ✓ |
| | Compressed Air | Less Than 25mg/m3 Oil Content | 300 psi | 32°F - 250°F | ✓ |
| | Hydrogen - H2 | | 125 psi | 0°F - 250°F | ✓ |
| | Nitrogen - N2 | | 300 psi | 32°F - 250°F | ✓ |
| | Oxygen - O2 (Non-Med) | Keep Oil and Fat Free/Non-Liquid O2 | 140 psi | Up to 140°F | ✓ |
| | Vacuum | | 29.2 in Hg | Call | ✓ |

Contact Merit Brass for information regarding specific applications

EPDM COPPERPRESS®

SYSTEM DATA SHEET

The Merit **CopperPress®** system is available in ½" – 4" on fittings and ½" – 2" on valves. This system joins ASTM B88 Type K, L, and M ½" – 4" copper tubing in the hard-drawn condition and soft copper tubing in sizes ½" – 1¼". **CopperPress®** is available in the EPDM sealing element. Our first to market VIPR® technology provides assurances that each fitting is pressed correctly as the band easily removes after it has been pressed. In addition, CopperPress® has a leak before (LBP) press system which gives a visual indication of a connection that has not been pressed.



The Merit CopperPress® Offering Includes:

- Adapters: Flange, Pex, Male, Female
- Cap
- Couplings: with Stop, No Stop and Extended No Stop
- 45° Elbows: Standard & Street
- 90° Elbows: Standard & Street
- Tees: Standard, Reducing and Reducing (P x FPT)
- Unions: Female, Male, Dielectric Female and Standard
- Cross Over: Street and Standard

Product Components:

- Lead-free dezincification resistant copper
- EPDM black sealing element
- Box, bag and band are color-coded GREEN for ease of receipt and proper installation per application

Working Pressure & Temperature:

- Working pressure: range from full vacuum to 300 psi
- Temperature range: 0° to 250°F

CopperPress® Certifications:

- ICC-ES LC1002
- NSF/ANSI/CAN 61
- NSF/ANSI/CAN 372
- IAPMO Z 1117

CopperPress® Valve Certifications:

- ICC-ES LC 1002
- IAPMO/ANSI/CAN Z1157
- NSF/ANSI/CAN 61
- NSF/ANSI/CAN 372



Approved Applications (See Page 12):

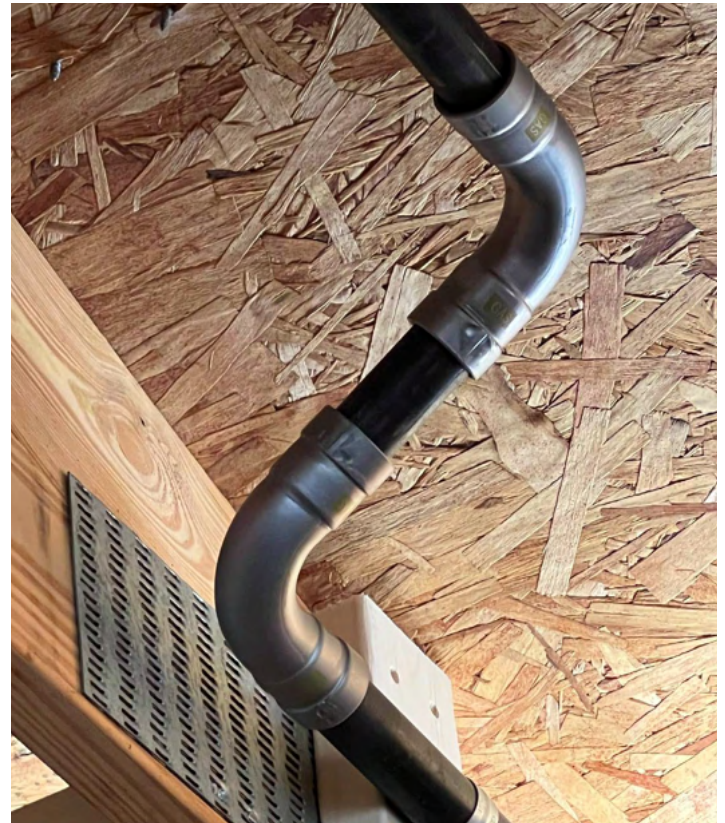
- Hot & Cold Potable water, Rainwater/Gray Water, Chilled Water, Hydronic Heating, Cooling water, low pressure steam, ethanol.

Approved Piping:

- ASTM B88 Type K, L, and M ½" – 4" copper tubing in the hard-drawn condition and soft copper tubing in sizes ½" – 1¼".

Press Tooling Reference Guide (See Page 10).

Please contact our sales team for additional information around our **CopperPress®** offering at 800.726.9800.



CARBONPRESS® FITTINGS

Benefits & Features

- Over 450 Fittings (0.5" – 4") Fittings made from ASTM A420 Carbon Steel
- Leak Before Press (LBP) feature on all Fittings
- Visual Indicator Press Ring® (VIPR®)
- Bag/Box is Color Coded to match the VIPR® and Sealing Element for Ease of Identification
 - » Green = EPDM
 - » Yellow = HNBR
 - » White = FKM
- Fluid Media Type is Color Coded on the Fitting
 - » Green "H2O" for EPDM
 - » Yellow "GAS" for HNBR
 - » White "IND" for FKM
- Can be Installed with all Major Press Tools/Jaws
 - » 0.5" – 2" Press Profile = IPS-Grab Ring (same as Carbon Steel MegaPress)
- 15-year Warranty on CarbonPress® Fittings
- FKM is Available Upon Request. Please Contact Your Sales Representative for More Information



TOOLING REFERENCE GUIDE

CarbonPress® Tools, Kits, Jaws and Rings

| Size | Milwaukee Part # | Tooling Name | Adapter | Ridgid Part # | Tooling Name | Adapter | Profile |
|------------|------------------|---|------------|---------------|--|---------------|-----------------|
| 0.5" - 2" | 2773-20 | M18 Force Logic Press Tool | | 67063 | RP 350 Press Tool | | |
| 0.5" - 1" | 49-16-2696 | M18 Black Iron Press Kit (0.5" - 1") | | 48558 | Press Jaw Kit (0.5" - 1") | | |
| 0.5" - 2" | 49-16-2697 | M18 Black Iron Press Kit (0.5" - 2") | | 48553 | Press Jaw Kit (0.5" - 2") | | |
| 2.5" - 4" | 2773-20L | M18 Force Logic Long Throw Press Tool | | 60658 | Press Booster | | |
| 0.5" | 49-16-2650B | 0.5" M18 Black Iron Press Jaw | | 37958 | 0.5" Press Jaw | | IPS - Grab Ring |
| 0.75" | 49-16-2651B | 0.75" M18 Black Iron Press Jaw | | 37963 | 0.75" Press Jaw | | IPS - Grab Ring |
| 1" | 49-16-2652B | 1" M18 Black Iron Press Jaw | | 37968 | 1" Press Jaw | | IPS - Grab Ring |
| 1.25" | 49-16-2653B | 1.25" M18 Black Iron Press Ring | 49-16-2659 | 37973 | 1.25" Press Ring | 21878 | IPS - Grab Ring |
| 1.5" | 49-16-2654B | 1.5" M18 Black Iron Press Ring | 49-16-2659 | 37978 | 1.5" Press Ring | 21878 | IPS - Grab Ring |
| 2" | 49-16-2655B | 2" M18 Black Iron Press Ring | 49-16-2659 | 37983 | 2" Press Ring | 21878 | IPS - Grab Ring |
| 2.5" | 49-16-2656B | 2.5" M18 Black Iron Press Ring | 49-16-2659 | 60643 | 2.5" Press Ring | Press Booster | IPS - Grab Ring |
| 3" | 49-16-2657B | 3" M18 Black Iron Press Ring | 49-16-2659 | 60648 | 3" Press Ring | Press Booster | IPS - Grab Ring |
| 4" | 49-16-2658B | 4" M18 Black Iron Press Ring | 49-16-2659 | 64653 | 4" Press Ring | Press Booster | IPS - Grab Ring |
| 1.25" - 2" | 49-16-2659 | Ring Jaw 1 | | 21878 | V2 Press Ring Actuator | | |
| 2.5" - 4" | 49-16-2659S | Ring Jaw 2 | | | | | |
| 2.5" - 4" | 49-16-2698 | M18 Black Iron Press Kit XL (2.5" - 4") | | 60638 | Press Booster with Press Rings (2.5" - 4") | | |

CarbonPress®, by Merit Brass Co. products can be used with Milwaukee, REMS, Ridgid, and Rothenberger tools with the associated Jaws for Carbon Steel/Black Iron Pipe. Please contact Merit Brass Co. for additional information.


SEALING APPLICATIONS


Fitting Housing


Made from ASTM A420 Carbon Steel with a Zn-Ni plating. See below for common applications.

Working Pressure

Working Pressure Range from Full Vacuum to 250 psi (17.2 bar) Water, 125 psi (8.6 bar) Gas, 200 psi (13.7 bar) for industrial applications.

| EPDM SEALING ELEMENT | | |
|-----------------------------|--|--|
| EPDM | Ethylene-propylene-diene monomer |  |
| Color | Black | |
| Temperature | -40°F to 300°F (-40°C to 148°C) | |
| Common Applications | Recommended for hot water, dilute acids, alkalis, oil free air and many chemical services. Excellent oxidation resistance. NOT FOR USE WITH HYDROCARBONS | |
| Manufacturing Process | Synthetically manufactured & peroxidically cross-linked | |
| Benefits of Sealing Element | Excellent oxidation resistance | |

| HNBR SEALING ELEMENT | | |
|-----------------------------|--|---|
| HNBR | Hydrogenated Nitrile Butadiene Rubber |  |
| Color | Yellow | |
| Temperature | -40°F to 200°F (-40°C to 93°C) | |
| Common Applications | Recommended for petroleum products, vegetable oils, mineral oils and air with oils. NOT FOR USE IN HOT WATER OR HOT AIR. | |
| Manufacturing Process | Synthetically manufactured & peroxidically cross-linked | |
| Benefits of Sealing Element | Excellent resilience and tear resistance | |

| FKM SEALING ELEMENT | | |
|-----------------------------|--|---|
| FKM | Fluoroelastomer |  |
| Color | Brown | |
| Temperature | 14°F to 293°F (-10°C to 145°C) | |
| Common Applications | Recommended for oxidizing acids, oils, hydraulic fluids, chlorinated hydrocarbons, and process water. NOT FOR USE WITH AMMONIA | |
| Manufacturing Process | Synthetically manufactured & peroxidically cross-linked | |
| Benefits of Sealing Element | Retains mechanical properties at elevated temperatures | |

NOTE: The FKM Sealing Element is available Upon Request. Please contact your sales representative for more information.

APPROVED APPLICATIONS



| Types of Service | | System Operating Conditions | | | | Carbonpress® Seals | | |
|---------------------|----------------------------------|---|----------------------|----------------|----------------|--------------------|------------|------------|
| | | Notes | Pressure (EPDM/HNBR) | Pressure (FKM) | Temperature | EPDM (Water) | FKM (Ind.) | HNBR (Gas) |
| Fluids/ Water | Chilled Water | Ethylene Glycol, Propylene Glycol | 230 psi | 200 psi | Min. -40°F | ✓ | ✓ | |
| | Fire Sprinkler | Compliant with UL & FM for NFPA 13, 13D & 13R | 175 psi | 175 psi | Ambient | ✓ | ✓ | |
| | Hydronic Heating | Ethylene Glycol, Propylene Glycol | 230 psi | 200 psi | 300°F | ✓ | ✓ | |
| | Low-Pressure System Steam | | 15 psi max. | 15 psi Max. | 300°F | ✓ | ✓ | |
| Gases | Argon | | 230 psi | 200 psi | Max. 140°F | ✓ | ✓ | ✓ |
| | Carbon Dioxide | | 230 psi | 200 psi | Max. 140°F | ✓ | ✓ | ✓ |
| | Compressed Air | Oil Concentrate <25mg/m3 | 230 psi | 200 psi | Max. 140°F | ✓ | ✓ | ✓ |
| | | Oil Concentrate >25mg/m3 | 230 psi | 200 psi | Max. 140°F | | ✓ | ✓ |
| | Natural Gas, LP Gas and Fuel Oil | | 125 psi max. | 125 psi Max. | -40°F to 180°F | | ✓ | ✓ |
| | Nitrogen | | 230 psi | 200 psi | Max. 140°F | ✓ | ✓ | ✓ |
| Oil & Lubricants | Vacuum | | 29.2 in Hg max. | 29.2in Hg Max. | Max. 140°F | | ✓ | ✓ |
| | Diesel Fuel | Compliant with NFPA 30 & 30A | 125 psi | 125 psi | | | ✓ | ✓ |
| | Engine Oil | | 150 psi | 150 psi | Ambient | | ✓ | ✓ |
| | Heating Fuel Oil | | 125 psi | 125 psi | -40°F to 180°F | | ✓ | ✓ |
| | Hydraulic Fluid | Mineral Based | 230 psi | 200 psi | Ambient | | ✓ | ✓ |
| | Transmission Fluid | | 230 psi | 200 psi | Ambient | | ✓ | ✓ |

Please note that all systems are recommended to be labeled clearly with the gas or fluid that is being conveyed.

Additionally, please consult Merit's Engineering & Product Line Management Team for information on applications not listed and applications that are outside the temperature and pressure ranges listed above.

EPDM CARBONPRESS® SYSTEM DATA SHEET

The Merit **CarbonPress®** system is available in ½" – 4". This system joins black iron, epoxy coated, and galvanized schedule 10 to 40 carbon steel pipe.

CarbonPress® is available in three sealing elements: EPDM, HNBR and FKM. Our first to market VIPR® technology provides assurances that each fitting is pressed correctly as the band easily removes after it has been pressed. In addition, **CarbonPress®** has a leak before press (LBP) system which gives a visual indication of a connection that has not been pressed.



The Merit CarbonPress® Offering Includes:

- Adapters: Flange, Male, Female
- Cap
- Couplings: with Stop, No Stop and Extended No Stop
- 45° Elbows: Standard & Street
- 90° Elbows: Standard & Street
- Tees: Standard, Reducing and Reducing (P x FPT)
- Unions: Female and Standard

Product Components:

CarbonPress® is a carbon steel alloy (ASTM A420) fitting which includes other high-quality components:

- Grab ring is made of 2Cr13 which deforms & grips the outside diameter of pipe to ensure a tight connection
- Separator ring made of 2Cr13
- Corrosion resistant
- Zinc nickel plating
- EPDM black sealing element
- Box, bag and band are color-coded GREEN for ease of receipt and proper installation per application

Working Pressure & Temperature:

- Working pressure: range from full vacuum to 250 psi (17.2 bar) for water
- Temperature range: -40°F to 300°F (-40°C to 148°C)

CarbonPress® Certifications:

- IAPMO Z 1117

Approved Applications (See Page 17):

- Hydronic Heating
- Chilled Water

Approved Piping:

- Steel pipes conforming to ASTM A53, A106, A135, A795 (schedule 10 to 40) and black iron, epoxy coated and galvanized steel.

Press Tooling Reference Guide (See Page 15).

Please contact our sales team for additional information around our **CarbonPress®** offering at 800.726.9800.

HNBR CARBONPRESS®

SYSTEM DATA SHEET

The Merit **CarbonPress®** system is available in ½" – 4". This system joins black iron, epoxy coated, and galvanized schedule 10 to 40 carbon steel pipe.

CarbonPress® is available in three sealing elements: EPDM, HNBR and FKM. Our first to market VIPR® technology provides assurances that each fitting is pressed correctly as the band easily removes after it has been pressed. In addition, **CarbonPress®** has a leak before press (LBP) system which gives a visual indication of a connection that has not been pressed.



The Merit CarbonPress® Offering Includes:

- Adapters: Flange, Male, Female
- Cap
- Couplings: with Stop, No Stop and Extended No Stop
- 45° Elbows: Standard & Street
- 90° Elbows: Standard & Street
- Tees: Standard, Reducing and Reducing (P x FPT)
- Unions: Female and Standard

Product Components:

CarbonPress® is a carbon steel alloy (ASTM A420) fitting which includes other high-quality components:

- Grab ring is made of 2Cr13 which deforms & grips the outside diameter of pipe to ensure a tight connection
- Separator ring made of 2Cr13
- Corrosion resistant
- Zinc nickel plating
- HNBR Yellow sealing element
- Box, bag and band are color-coded YELLOW for ease of receipt and proper installation per application

Working Pressure & Temperature:

- Working pressure: 125 psi (8.6 bar) for gas
- Temperature range: -40°F to 200°F (-40°C to 93°C)

CarbonPress® Certifications:

- IAPMO/ANSI 4/CSA 6.32

Approved Applications (See Page 17):

- Fuel Gas Applications

Approved Piping:

- Steel pipes conforming to ASTM A53, A106, A135, A795 (schedule 10 to 40) and black iron, epoxy coated and galvanized steel.

Press Tooling Reference Guide (See Page 15).

Please contact our sales team for additional information around our **CarbonPress®** offering at 800.726.9800.

FKM CARBONPRESS®

SYSTEM DATA SHEET

The Merit **CarbonPress®** system is available in ½" – 4". This system joins black iron, epoxy coated, and galvanized schedule 10 to 40 carbon steel pipe.

CarbonPress® is available in three sealing elements: EPDM, HNBR and FKM. FKM is available upon request. Please contact your sales representative for more information. Our first to market VIPR® technology provides assurances that each fitting is pressed correctly as the band easily removes after it has been pressed. In addition, **CarbonPress®** has a leak before press (LBP) system which gives a visual indication of a connection that has not been pressed.



The Merit CarbonPress® Offering Includes:

- Adapters: Flange, Male, Female
- Cap
- Couplings: with Stop, No Stop and Extended No Stop
- 45° Elbows: Standard & Street
- 90° Elbows: Standard & Street
- Tees: Standard, Reducing and Reducing (P x FPT)
- Unions: Female and Standard

Product Components:

CarbonPress® is a carbon steel alloy (ASTM A420) fitting which includes other high-quality components:

- Grab ring is made of 2Cr13 which deforms & grips the outside diameter of pipe to ensure a tight connection
- Separator ring made of 2Cr13
- Corrosion resistant
- Zinc nickel plating
- FKM brown sealing element
- Box, bag and band are color-coded Brown for ease of receipt and proper installation per application

Working Pressure & Temperature:

- Working pressure: 200 psi (13.7 bar) for industrial applications
- Temperature range: 14°F to 293°F (-10°C to 145°C)

CarbonPress® Certifications:

- IAPMO Z 1117

Approved Applications (See Page 17):

- Hydronic Heating
- Chilled Water

Approved Piping:

- Steel pipes conforming to ASTM A53, A106, A135, A795 (schedule 10 to 40) and black iron, epoxy coated and galvanized steel.

Press Tooling Reference Guide (See Page 15).

Please contact our sales team for additional information around our **CarbonPress®** offering at 800.726.9800.

StainlessPress®

Isotubi-USA, By Merit Brass Co.



STAINLESS PRESS® FITTINGS & VALVES

Benefits & Features

- Over 500 Fittings (0.5" – 2") Fittings made from ANSI 316L Stainless Steel
- Leak Before Press (LBP) feature on all Fittings
- VIPR® (Visual Indicator Press Ring®)
- Bag/Box is Color Coded to match the VIPR® and Sealing Element for Ease of Identification
 - » Green = EPDM
 - » Yellow = HNBR
 - » White = FKM
- Can be Installed with all Major Press Tools/Jaws
 - » 0.5" – 2" Press Profile = IPS-M
- 15-year Warranty on StainlessPress® Fittings
- 5-year Warranty on StainlessPress® Ball Valves
- FKM is Available Upon Request. Please Contact Your Sales Representative for More Information



TOOLING REFERENCE GUIDE

StainlessPress® Tools, Kits, Jaws and Rings

| Size | Milwaukee Part # | Tooling Name | Adapter | Press Profile |
|--------------|------------------|--|-------------|---------------|
| 0.5" - 1.25" | 2773-20 | M18 Force Logic Press Tool | | |
| 1.5" - 2" | 2773-20L | M18 Force Logic Long Throw Press Tool | | |
| 0.5" | 49-16-2650S | 0.5" M18 IPS-IA Jaw | | IPS - M |
| 0.75" | 49-16-2651S | 0.75" M18 IPS-IA Jaw | | IPS - M |
| 1" | 49-16-2652S | 1" M18 IPS-IA Jaw | | IPS - M |
| 1.25" | 49-16-2653S | 1.25" M18 IPS-IA Ring | 49-16-2659 | IPS - M |
| 1.5" | 49-16-2654S | 1.5" M18 IPS-IA Ring | 49-16-2659S | IPS - M |
| 2" | 49-16-2655S | 2" M18 IPS-IA Ring | 49-16-2659S | IPS - M |
| 1.25" | 49-16-2659 | Ring Jaw 1 | | |
| 1.5" - 2" | 49-16-2659S | Ring Jaw 2 | | |
| 1.25" - 2" | 49-16-2691S | M18 IPS-IA Press Ring Kit (1.25" - 2") | | |

StainlessPress®, by Merit Brass Co. products can be used with Milwaukee, REMS, Ridgid, and Rothenberger tools with the associated Jaws for Stainless Steel Pipe, and IPS-M Profile Press Fittings. Please contact Merit Brass Co. for additional information.

THREE PIECE BALL VALVE | SIZES: 1/2" – 2"

StainlessPress® Ball Valve Codes & Standards

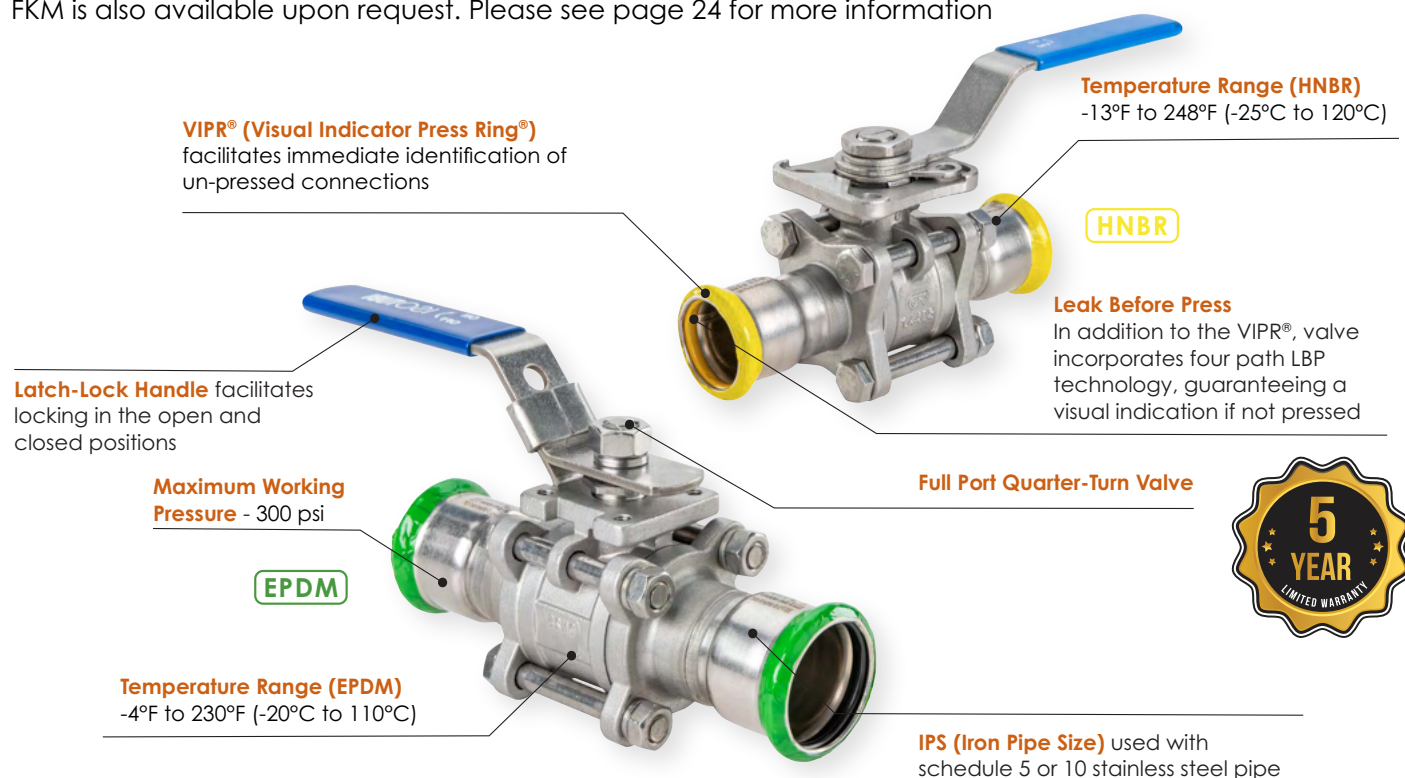
- In compliance with the Buy American Act
- ASME B31.1 Power Piping, B31.3 Process Piping, B31.9 Building Services Piping
- IPC, IMC, UPC, UMC
- CPC & CMC (California Plumbing and Mechanical Codes)
- City of Los Angeles Plumbing and Mechanical Codes
- Massachusetts Regulation 248 CMR 10.00: Uniform State Plumbing Code
- Massachusetts State Building Code 780 CMR Ninth Edition: Chapter 28
- National Standard Plumbing Code (NSPC)
- National Plumbing Code of Canada (NPCC)

StainlessPress® Valve Certifications

- ICC-ES LC 1002 Press Connection Fittings for Potable Water Tube and Radiant Heating Systems
- IAPMO/ANSI/CAN Z1157 Ball Valves
- NSF/ANSI/CAN 61 Drinking Water System Components – Health Effects (EPDM Only)
- NSF/ANSI/CAN 372 Drinking Water System Components – Lead Content (EPDM Only)

Design Features

FKM is also available upon request. Please see page 24 for more information



CHEMICAL COMPATIBILITY CHART

| Chemical | | Chemical Formulas | 316 SS | StainlessPress® Seals | | | Valve Seat |
|----------|---------------------------------|-------------------|--------|-----------------------|------|-----|------------|
| | | | | EPDM | HNBR | FKM | PTFE |
| Acids | Acetic Acid 5% | $C_2H_4O_2$ | A | A | B | A | A |
| | Acetic Acid 10% | $C_2H_4O_2$ | A | A | C | B | A |
| | Acetic Acid Glacial | $C_2H_4O_2$ | A | A | B | D | A |
| | Boric Acid 20% | H_3BO_3 | A | A | A | A | A |
| | Nitric Acid 20°C | HNO_3 | A | D | D | B | A |
| Bases | Ammonium Hydroxide Concentrated | NH_4OH | A | A | D | B | A |
| | Potassium Hydroxide 50% 20°C | KOH | A | A | B | D | A |
| Gases | Acetylene | C_2H_2 | A | A | A | A | A |
| | Air | | A | A | A | A | A |
| | Argon | Ar | A | A | A | A | A |
| | Butane | C_4H_{10} | A | D | A | A | A |
| | Carbon Dioxide | CO_2 | A | A | A | A | A |
| | Carbon Monoxide | CO | A | A | A | A | A |
| | Ethyl Chloride (no moisture) | C_2H_5Cl | A | B | A | A | A |
| | Helium | He | A | A | A | A | A |
| | Hydrogen | H_2 | A | A | A | A | A |
| | Hydrogen Sulfide | H_2S | A | A | A | D | A |
| | Methane | CH_4 | A | D | A | A | A |
| | Neon | Ne | A | A | A | A | A |
| | Nitrogen | N | A | A | A | A | A |
| | Propane | C_3H_8 | A | D | A | A | A |
| | Xenon | Xe | A | A | A | A | A |
| Alcohols | Amyl Alcohol | $C_5H_{11}OH$ | A | A | B | B | A |
| | Butyl Alcohol (Butanol) | $C_4H_{10}O$ | A | B | A | A | A |
| | Ethyl Alcohol < 80% | C_2H_6O | A | A | A | B | A |
| | Ethyl Alcohol > 80% | C_2H_6O | A | A | A | B | A |
| | Glycerine (Glycerol) | $C_3H_5(OH)_3$ | A | A | A | A | A |
| | Isopropyl Alcohol | C_3H_8O | A | A | B | A | A |
| | Methanol | CH_3OH | A | A | A | D | A |

Recommendations shown above are general in nature. Product service life for a given application is dependent on actual media mixture, pressure, temperature and operational (cycling) parameters. Contact sales@meritbrass.com if you have questions or wish to inquire about compatibility with chemicals not shown in the chart.

A = Recommended

B = Minor Effect

C = Moderate Effect

D = Unsatisfactory

SEALING APPLICATIONS


Fitting Housing


Made from 316 Stainless Steel.


Working Pressure

Working Pressure Range from Full Vacuum 300 psi.

See below tables for common applications and benefits of the sealing element. Details of approved applications may be found on page 24.

| EPDM SEALING ELEMENT | | |
|-----------------------------|--|--|
| EPDM | Ethylene-propylene-diene monomer |  |
| Color | Black | |
| Temperature | Fittings & Valves: -4°F to 230°F (-20°C to 110°C) | |
| Common Applications | Recommended for hot water, dilute acids, alkalis, oil free air and many chemical services. Excellent oxidation resistance. NOT FOR USE WITH HYDROCARBONS | |
| Manufacturing Process | Synthetically manufactured & peroxide-cured | |
| Benefits of Sealing Element | Excellent oxidation resistance | |

| HNBR SEALING ELEMENT | | |
|-----------------------------|--|---|
| HNBR | Hydrogenated Nitrile Butadiene Rubber |  |
| Color | Yellow | |
| Temperature | Fittings: -31°F to 248°F (-35°C to 120°C) Valves: -13°F to 248°F (-25°C to 120°C) | |
| Common Applications | Recommended for petroleum products, vegetable oils, mineral oils and air with oils. NOT FOR USE IN HOT WATER OR HOT AIR. | |
| Manufacturing Process | Synthetically manufactured & peroxide-cured | |
| Benefits of Sealing Element | Excellent resilience and tear resistance | |

| FKM SEALING ELEMENT | | |
|-----------------------------|---|---|
| FKM | Fluoroelastomer |  |
| Color | Green | |
| Temperature | Fittings & Valves: -4°F to 356°F (-20°C to 180°C) | |
| Common Applications | Recommended for oxidizing acids, oils, hydraulic fluids, chlorinated hydrocarbons, and process water. NOT FOR USE WITH AMMONIA. | |
| Manufacturing Process | Synthetically manufactured & peroxide cured | |
| Benefits of Sealing Element | Retains mechanical properties at elevated temperatures | |

NOTE: The FKM Sealing Element is available Upon Request. Please contact your sales representative for more information.

EPDM STAINLESSPRESS®

SYSTEM DATA SHEET

The Merit **StainlessPress®** system is available in ½" – 2" on fittings and ½" – 2" on valves. This system joins 304 or 316 Stainless steel pipe in schedules 5 or 10. **StainlessPress®** is available in the EPDM, HNBR and FKM sealing elements. Our first to market VIPR® technology provides assurances that each fitting is pressed correctly as the band easily removes after it has been pressed. In addition, **StainlessPress®** has a Leak Before Press (LBP) System which gives a visual indication of a connection that has not been pressed.

The Merit **StainlessPress®** Offering Includes:

- Adapters: Flange, Transition, Weld, Van Stone Flange, Male, Female
- Cap
- Couplings: With Stop and w/o Stop
- 90° Elbows: Standard & Street
- 45° Elbows: Standard & Street
- Tees: Equal, Reducing and Reducing (P x FPT)
- Unions: Standard
- Ball Valves

Product Components:

StainlessPress® is a 316 stainless steel alloy fitting which includes other high quality components:

- Corrosion resistant
- EPDM black sealing element
- Box, bag and band are color-coded GREEN for ease of receipt and proper installation per application

Working Pressure & Temperature:

- Working pressure from full vacuum to 300 psi on schedule 5 or 10 stainless steel pipe
- Fitting and Valve temperature range: -4°F to 230°F (-20°C to 110°C)

StainlessPress® Certifications:

- ICC-ES LC 1002 Press Connection Fittings for Potable Water Tube and Radiant Heating Systems
- IAPMO/ANSI/CAN Z1117 Press Connections
- NSF/ANSI/CAN 61 Drinking Water System

Components – Health Effects

- NSF/ANSI/CAN 372 Drinking Water System Components – Lead Content
- FM 1920 Pipe Coupling and Fittings for Above Ground Fire Protection Systems
- American Bureau of Shipping Product Design Assessment (PDA) Certificate 1-5-PR1438892-PDA, Piping System and Couplings

StainlessPress® Ball Valve Certifications:

- ICC-ES LC 1002 Press Connection Fittings for Potable Water Tube and Radiant Heating Systems
- IAPMO/ANSI/CAN Z1157, NSF 61/372 Ball Valves
- NSF/ANSI/CAN 61 Drinking Water System Components - Health Effects
- NSF/ANSI/CAN 372 Drinking Water System Components - Lead Content

NOTE: Code, standard and certification compliance is sealing element dependent. Only products with EPDM seals are suitable for potable water applications. Contact Merit Brass Customer Service for additional information.

Approved Applications:

Please refer to our chemical compatibility chart (see page 24).

Approved Piping:

Stainless steel schedule 5 or schedule 10 stainless steel IPS pipe.

Press Tooling Reference Guide (See Page 22).

Please contact our sales team for additional information around our **StainlessPress®** offering at 800.726.9800.

HNBR STAINLESSPRESS®

SYSTEM DATA SHEET

The Merit **StainlessPress**® system is available in ½" – 2" on fittings and ½" – 2" on valves. This system joins 304 or 316 Stainless steel pipe in schedules 5 or 10. **StainlessPress**® is available in the EPDM, HNBR and FKM sealing elements. Our first to market VIPR® technology provides assurances that each fitting is pressed correctly as the band easily removes after it has been pressed. In addition, **StainlessPress**® has a Leak Before Press (LBP) System which gives a visual indication of a connection that has not been pressed.

The Merit **StainlessPress**® Offering Includes:

- Adapters: Flange, Transition, Weld, Van Stone Flange, Male, Female
- Cap
- Couplings: With Stop and w/o Stop
- 90° Elbows: Standard & Street
- 45° Elbows: Standard & Street
- Tees: Equal, Reducing and Reducing (P x FPT)
- Unions: Standard
- Ball Valves

Product Components:

StainlessPress® is a 316 stainless steel alloy fitting which includes other high quality components:

- Corrosion resistant
- HNBR yellow sealing element
- Box, bag and band are color-coded YELLOW for ease of receipt and proper installation per application

Working Pressure & Temperature:

- Working pressure: from full vacuum to 300 psi on schedule 5 or 10 stainless steel pipe
- Fitting temperature range: -31°F to 248°F (-35°C to 120°C)
- Valve temperature range: -13°F to 248°F (-25°C to 120°C)

StainlessPress® Certifications:

- ICC-ES LC 1002 Press Connection Fittings for Potable Water Tube and Radiant Heating Systems

- IAPMO/ANSI/CAN Z1117 Press Connections
- FM 1920 Pipe Coupling and Fittings for Above Ground Fire Protection Systems
- American Bureau of Shipping Product Design Assessment (PDA) Certificate 1-5-PR1438892-PDA, Piping System and Couplings

StainlessPress® Ball Valve Certifications:

- ICC-ES LC 1002 Press Connection Fittings for Potable Water Tube and Radiant Heating Systems
- IAPMO/ANSI/CAN Z1157, NSF 61/372 Ball Valves

NOTE: Code, standard and certification compliance is sealing element dependent. Only products with EPDM seals are suitable for potable water applications. Contact Merit Brass Customer Service for additional information.

Approved Applications:

Please refer to our chemical compatibility chart (see page 24).

Approved Piping:

Stainless steel schedule 5 or schedule 10 stainless steel IPS pipe .

Press Tooling Reference Guide (See Page 22).

Please contact our sales team for additional information around our **StainlessPress**® offering at 800.726.9800.

FKM STAINLESSPRESS®

SYSTEM DATA SHEET

The Merit **StainlessPress®** system is available in ½" – 2" on fittings and ½"– 2" on valves. This system joins 304 or 316 Stainless steel pipe in schedules 5 or 10. **StainlessPress®** is available in the EPDM, FKM and HNBR sealing elements. FKM is available upon request. Please contact your sales representative for more information. Our first to market VIPR® technology provides assurances that each fitting is pressed correctly as the band easily removes after it has been pressed. In addition, **StainlessPress®** has a Leak Before Press (LBP) System which gives a visual indication of a connection that has not been pressed.

The Merit **StainlessPress®** Offering Includes:

- Adapters: Flange, Transition, Weld, Van Stone Flange, Male, Female
- Cap
- Couplings: With Stop and w/o Stop
- 90° Elbows: Standard & Street
- 45° Elbows: Standard & Street
- Tees: Equal, Reducing and Reducing (P x FPT)
- Unions: Standard
- Ball Valves

Product Components:

StainlessPress® is a 316 stainless steel alloy fitting which includes other high quality components:

- Corrosion resistant
- FKM green sealing element
- Box, bag and band are color-coded WHITE for ease of receipt and proper installation per application

Working Pressure & Temperature:

- Working pressure: from full vacuum to 300 psi on schedule 5 or 10 stainless steel pipe
- Fitting and Valve temperature range: -4°F to 356°F (-20°C to 180°C).

StainlessPress® Certifications:

- ICC-ES LC 1002 Press Connection Fittings for Potable Water Tube and Radiant Heating Systems
- IAPMO/ANSI/CAN Z1117 Press Connections

- FM 1920 Pipe Coupling and Fittings for Above Ground Fire Protection Systems
- American Bureau of Shipping Product Design Assessment (PDA) Certificate 1-5-PR1438892-PDA, Piping System and Couplings

StainlessPress® Ball Valve Certifications:

- ICC-ES LC 1002 Press Connection Fittings for Potable Water Tube and Radiant Heating Systems
- IAPMO/ANSI/CAN Z1157, NSF 61/372 Ball Valves

NOTE: Code, standard and certification compliance is sealing element dependent. Only products with EPDM seals are suitable for potable water applications. Contact Merit Brass Customer Service for additional information.

Approved Applications:

Please refer to our chemical compatibility chart (see page 24).

Approved Piping:

Stainless steel schedule 5 or schedule 10 stainless steel IPS pipe.

Press Tooling Reference Guide (See Page 22).

Please contact our sales team for additional information around our **StainlessPress®** offering at 800.726.9800.



STAINLESS STEEL PIPE

Features

- Available in ½" – 12" & 16"
- Welded and Seamless
- Welded pipe available in bundles and sub-bundles
- Schedules 10, 40 and 80
- Schedule 10 Mates with StainlessPress® Fittings
- Meets ASTM A-312/ASME SA-312 Specification
- Meets NSF/ANSI 372 as a Lead-Free Product



Used in Water Treatment, Wastewater Treatment, Oil, Gas, Chemical, Pharmaceutical, Medical, Commercial Plumbing, Residential Plumbing, Automotive, Transportation, Architecture, Construction, Power Generation, Food, Beverage, Pulp, Paper, OEM, and Petrochemical Applications

Standard Labeling

For welded pipe, all bundles are marked with a unique QR Code, which contains:



- Sub-Bundle Quantity Detail
- Merit Brass Co.'s Part Number
- ASTM A312/A312 Specification
- Alloy (304/L or 316/L)
- Diameter
- Merit Brass Purchase Order Number
- Bundle Quantity Detail
- Heat Number
- Date of Packaging

Merit offers regular flatbed services on our **WOW (Warehouse on Wheels)** Runs to safely transport your pipe. Available at all of our convenient locations





CarbonPress®
By Merit Brass Co.

CopperPress®
By Merit Brass Co.

StainlessPress®
Isotubi-USA, By Merit Brass Co.

MeritPress™
By Merit Brass Co.



PRESS TECHNOLOGY TRAINING CERTIFICATION

This Certificate Verifies That

Has successfully completed training for the installation of **CarbonPress®**, **CopperPress®**, **StainlessPress®**, **Isotubi-USA**, and **MeritPress™** by Merit Brass Co. fittings and valves.

Certification valid for 2 years from date shown.

Date _____

Trainer's Initials _____

www.meritbrass.com | contactus@meritbrass.com | 800.726.9800



CarbonPress®
By Merit Brass Co.

CopperPress®
By Merit Brass Co.

StainlessPress®
IsoTubi-USA, By Merit Brass Co.

MeritPress™
By Merit Brass Co.



LOCATIONS

SPARKS DISTRIBUTION CENTER
200 Vista Boulevard Suite #106
Sparks, NV 89434

LONG BEACH PIPE DEPOT
2396 E. Artesia Blvd
Long Beach, CA 90805

DALLAS DISTRIBUTION CENTER
10614 King William Drive
Dallas, TX 75220

CLEVELAND HEADQUARTERS
One Merit Drive/PO Box 43127
Cleveland, OH 44143

BIRMINGHAM DISTRIBUTION CENTER
220 Oxmoor Court
Birmingham, AL 35209

HOUSTON DISTRIBUTION CENTER
4680 S. Sam Houston Pkwy W, Suite 120
Houston, TX 77053

LEARN MORE



800.726.9800

Follow us on      

Merit Brass Headquarters Has An ISO 9001:2015 Registered Quality Management System

www.meritbrass.com
www.mbwebxpress.com
contactus@meritbrass.com