

STAINLESS STEEL VALVES

3-PC Stainless Steel Ball Valve – Full Port 1000/400 WOG (Threaded & Socket Weld) V310FP/SWV310FP

Description

This specification covers 3-PC Stainless Steel Ball Valves used in piping applications as determined by Engineering as a function of what is being transported in the system, pressure ratings, temperature of material and line pressure.



Specifications

Stainless Steel Ball Valves in 3-PC provided by Merit Brass Co. are full port and designed to Class 1000 WOG. The housing shall conform to ASTM A351 CF8M (316 SS) with PTFE seats securing a stainless steel (SUS316) ball. This product is suitable for above, or below ground, applications.

Size Range

- 1/4" – 3"

Ends

- Threaded
- Socket Weld

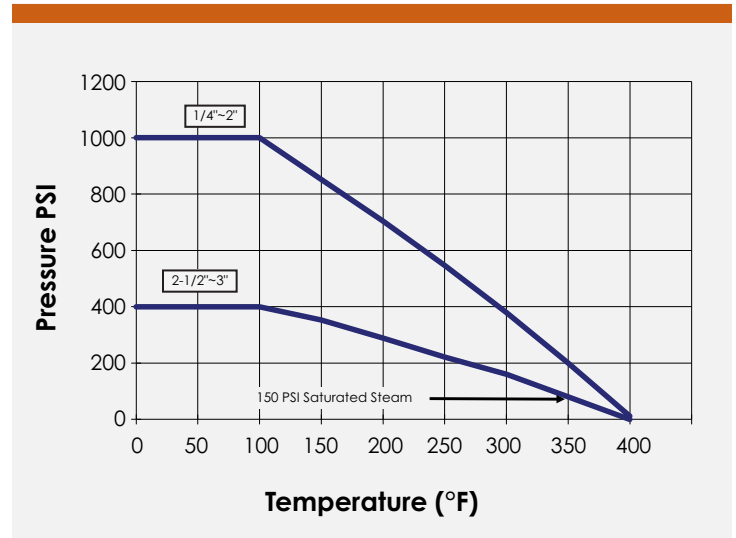
Project Information	Approval Stamp
Project Name:	Approved
Project Location:	Approved As Noted
Project Contractor:	Not Approved
Project Engineer:	Remarks:
Project Distributor:	
Project Rep:	
Submittal Date:	
Notes 1:	
Notes 2:	

For the Master Carton (Box) Quantity List, please visit meritbrass.com. Some items not shown may be available upon request. Some items and sizes may be discontinued when stock is depleted and may require a minimum order quantity. Certain inventory limitations may apply. For list prices in Excel, please download by logging onto meritbrass.com. Contact our Sales Team for details at sales@meritbrass.com. Every precaution has been taken in preparing this submittal, however, Merit Brass Company cannot be held responsible for typographical errors or omissions.

STAINLESS STEEL VALVES

3-PC Stainless Steel Ball Valve – Full Port 1000/400 WOG (Threaded & Socket Weld)

V310FP/SWV310FP



*WOG Rating is dependent upon the valve size

V310FP Threaded				
Size	Cv	Weight (Lbs.)	Port (In.)	Torques (In-Lbs.)
1/4"	6	0.69	0.43	36
3/8"	7	0.68	0.50	36
1/2"	10	1.03	0.63	40
3/4"	25	1.28	0.77	65
1"	35	2.47	0.98	100
1-1/4"	46	3.35	1.26	155
1-1/2"	80	4.36	1.50	185
2"	110	7.58	1.97	225
2-1/2"	310	14.17	2.56	420
3"	360	21.76	3.15	1380

SWV310FP Socket Weld				
Size	Cv	Weight (Lbs.)	Port (In.)	Torques (In-Lbs.)
1/2"	10	0.99	0.63	40
3/4"	25	1.28	0.77	65
1"	35	2.40	0.98	100
1-1/4"	46	3.30	1.26	155
1-1/2"	80	4.28	1.50	185
2"	110	7.46	1.97	225
2-1/2"	310	13.29	2.56	420
3"	360	20.76	3.15	1380

Design Features

- Blow-out proof stem
- Pressure balance hole ball slot
- Full Port
- Various threaded standards available
- Locking device is available upon request

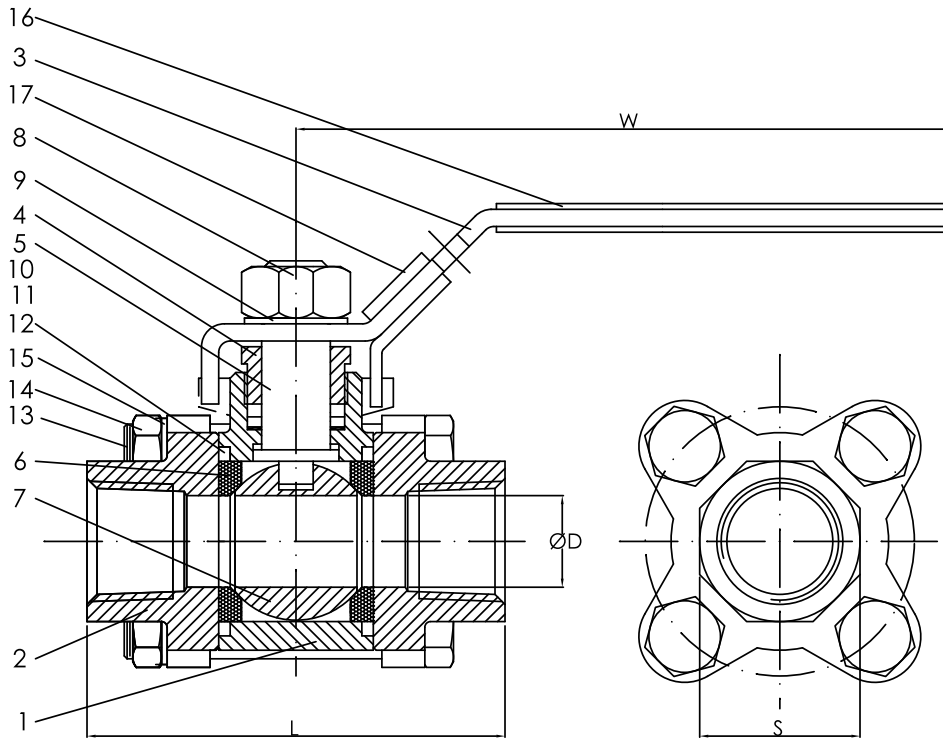
Applicable Standards

- Design: ASME/ANSI B16.34 EN12516
- Wall thickness: ASME/ANSI B16.34 EN12516
- Pipe thread: ASME/ANSI B1.20.1
- Socket weld: ASME/ANSI B16.11
- Inspection & testing: ASME/ANSI B16.34 EN12266

STAINLESS STEEL VALVES

3-PC Stainless Steel Ball Valve – Full Port 1000/400 WOG (Threaded & Socket Weld)

V310FP/SWV310FP



Unit: Inch

NO.	Part Name	Qty.	Material		
1	Body	1	ASTM	A351	CF8M
2	End Cap	2	ASTM	A351	CF8M
3	Handle	1	SUS 304		
4	Gland	1	SUS 304		
5	Stem	1	SUS 316		
6	Seat Ring	2	PTFE		
7	Ball	1	SUS 316		
8	Handle Nut	1	SUS 304		
9	Spring Washer	1	SUS 304		
10	Thrust Washer	1,2	PTFE		
11	Thrust Washer	1	PTFE		
12	Seal Washer	2	PTFE		
13	Bolts	4	SUS 304		
14	Nut	4	SUS 304		
15	Spring Washer	4	SUS 304		
16	Handle Cover	1	Plastic		
17	Locking Device	1	SUS 304		

Size	D Port	S	L	W	H
1/4"	0.43	0.87	2.17	3.80	1.70
3/8"	0.50	0.87	2.17	3.80	1.70
1/2"	0.63	1.06	2.52	4.25	2.05
3/4"	0.77	1.30	2.91	4.25	2.15
1"	0.98	1.58	3.31	7.01	2.68
1-1/4"	1.26	1.97	3.78	7.01	2.87
1-1/2"	1.50	2.21	4.13	7.01	3.05
2"	1.97	2.76	4.84	7.01	3.43
2-1/2"	2.56	3.43	5.98	9.61	4.72
3"	3.15	3.94	6.85	9.61	5.16

NOTES

LOCATIONS

SPARKS DISTRIBUTION CENTER
200 Vista Boulevard Suite #106
Sparks, NV 89434

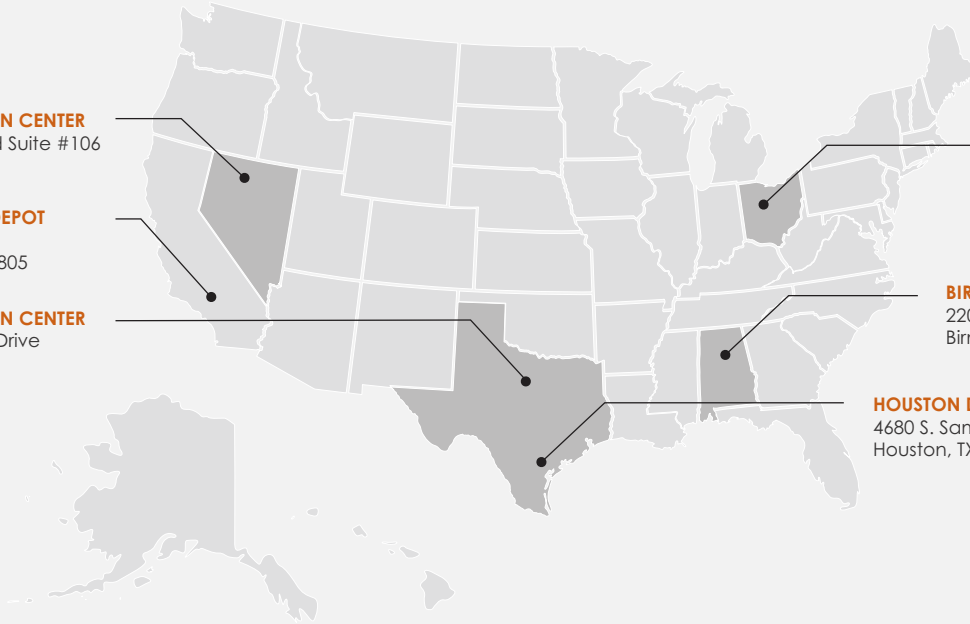
LONG BEACH PIPE DEPOT
2396 E. Artesia Blvd
Long Beach, CA 90805

DALLAS DISTRIBUTION CENTER
10614 King William Drive
Dallas, TX 75220

CLEVELAND HEADQUARTERS
One Merit Drive/PO Box 43127
Cleveland, OH 44143

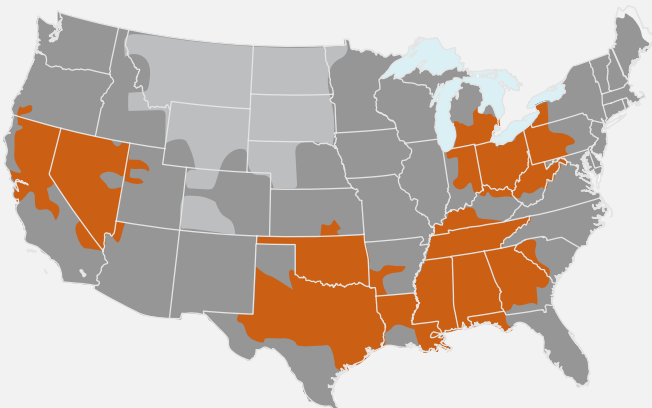
BIRMINGHAM DISTRIBUTION CENTER
220 Oxmoor Court
Birmingham, AL 35209

HOUSTON DISTRIBUTION CENTER
4680 S. Sam Houston Pkwy W, Suite 120
Houston, TX 77053



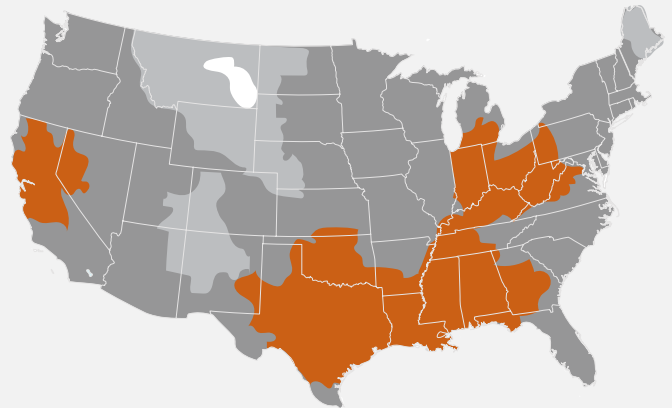
SHIPPING TIMES

UPS



1 Day 2 Days 3 Days

FedEx



1 Day 2 Days 3 Days 4 Days

*FedEx is Merit's Primary Carrier

LEARN MORE



800.726.9800

Follow us on

Merit Brass Headquarters Has An ISO 9001:2015 Registered Quality Management System

www.meritbrass.com
www.mbwebxpress.com
contactus@meritbrass.com