

Find us in

MasterSpec®

Powered by Deltek Specpoint®

www.meritbrass.com
www.mbwebxpress.com

StainlessPress®

Isotubi-USA, By Merit Brass Co.

2024

PRODUCT CATALOG



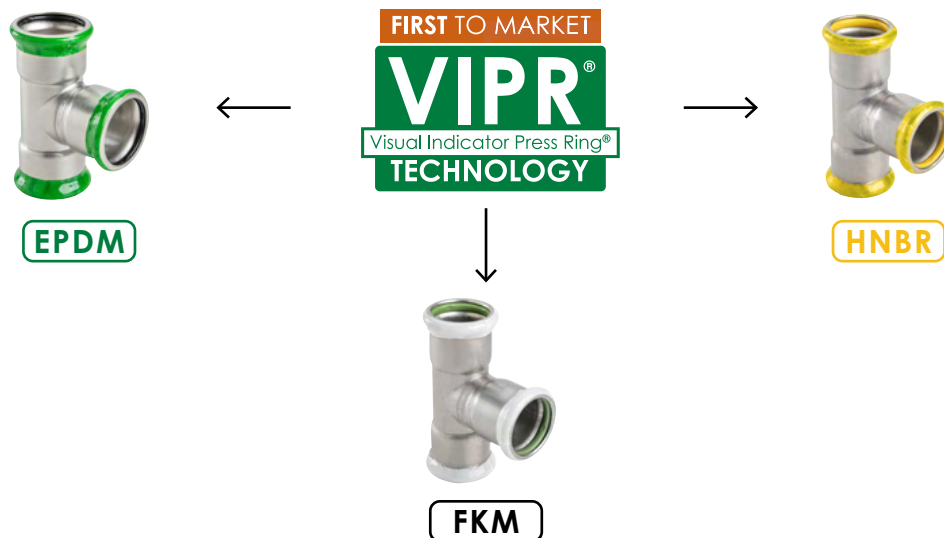
**MERIT
BRASS**
DIRECTING THE FLOW OF *Quality*

Merit Brass Co.

One Merit Dr. • PO Box 43127
Cleveland, OH 44143

StainlessPress® is Merit Brass' solution for professionals choosing to join schedule 5 or 10 stainless steel IPS pipe through the use of press technology. **StainlessPress®** is focused on quality, safety, reliability, and ease of use.

- ½" – 2" including couplings, elbows, tees, adapters, caps, unions, and flange adapters.
 - » StainlessPress® Valves available in ½" – 2"
- Extensive offering of reducing tees.
- Dual leak detection feature identify uncrimped connections:
 - » **Mechanical Leak Before Press (LBP) sealing elements.**
 - » **FIRST TO MARKET Visual Indicator Press Ring® (VIPR®)** – facilitates immediate identification of unpressed connections as well as application – green = EPDM (water), yellow = HNBR (gas) and green = industrial
- Compatible with most common pressing tools and jaws in the market.
- EPDM (Ethylene Propylene Diene Monomer), HNBR (Hydrogenated Nitrile Butadiene) and FKM (Fluoroelastomer) seal is factory-installed & lubricated.
- Packaged in common industry quantities.
- Box, bag and ring are color-coded to the sealing element.
- **Most comprehensive package with over 325 SKUs.**



Merit Brass reserves the right to change any portion of the information shown in this product catalog without obligation to change **StainlessPress®** products previously or subsequently sold.

See meritbrass.com for most current information.

TABLE OF CONTENTS

Why StainlessPress® Fittings?	4
Features & Benefits	5
System Data	6
Fittings North American Certifications	7
Material Specifications	8
Minimum Installation Distances	9
Tooling Referenceguide	10
Minimum Clearance For Pressing	11
Chemical Compatibility Chart	12
Sealing Elements	13
Dimensional Data	14
Coupling With Stop	14
Coupling w/o Stop	14
90° Elbow	15
90° Street Elbow	15
45° Elbow	16
45° Street Elbow	16
Cap	17
Equal Tee	17
Reducing Tee	18
Reducing Tee (P x FPT)	19
Bushing Reducer	20
Female Adapter	21
Male Adapter	22
Flange Adapter	23
Van Stone Flange Adapter	23
Union	24
Transition Adapter	24
Weld Adapter	25
Ball Valve	25
Installation Instructions	26
Limited Warranty	28
Notes	29

WHY STAINLESSPRESS® FITTINGS?

Merit's **StainlessPress®** Fittings are available in sizes ½" through 2". These fittings are designed to work with Schedule 5 or 10 Stainless Steel IPS Pipe.

Press joints can be readily achieved using several commercially available pressing tools. Several press fittings are available with male or female threaded ends to enable connectivity with threaded piping systems. Conversion to flanged systems can be made with ANSI Class 125/150, PN 10/16, and BS 10 Table E Flange Adapters. Where breaks in pipe work may be needed, the Union Coupling can be used for quick and easy connections/disconnections. Weld and grooved adapters are available to transition to welded or grooved piping systems.

Our **StainlessPress®** fittings (Isotubi-USA, by Merit Brass Co.) use a three-step installation process: cutting and deburring the pipe; marking and inserting the pipe into the fitting; and pressing the fitting and pipe together to form a pipe joint using one of the pressing tools identified in the installation instructions. These fittings make it easy to quickly and safely install piping systems in a wide range of mechanical, industrial and marine applications.

These fittings are made from a highly corrosion resistant 316L stainless steel and are available with a variety of sealing elements, making them suitable for use in numerous applications such as HVAC, plumbing, municipal, and industrial installations.

StainlessPress® fittings also incorporate a unique sealing element seal design that provides an important Leak-Before-Press (LBP) feature. When the fitting and pipe are pressed together, they deform to create a durable permanent pipe joint, while the sealing element compresses to make the joint leak-proof. An improperly pressed fitting allows a leak path for liquids and gases, thereby enabling an installer to identify the incorrectly installed fittings easily. The Leak-Before-Press (LBP) feature significantly reduces the change of improper joints, helping to ensure a leak-free system.



FEATURES & BENEFITS

EPDM & HNBR | 15-Year Limited Warranty on Fittings & 5-Year Limited Warranty on **StainlessPress®** Valves.

The patented Visual Indicator Press Ring® (VIPR®) gives redundancy in identifying unpressed connections. The color-coded plastic sleeve can be easily removed when the connection is pressed, and also indicates the sealing element material preventing costly and potentially unsafe installation errors.

Mates with S5 & S10, 304 & 316
Stainless Steel Pipe

**4 Path Leak Before
Press (LBP) System**



Engineered sealing elements are designed to leak before they are pressed, giving a visual indication of a connection that has not been pressed.

Box, bag and ring are Color-Coordinated to the Sealing Element



Buy American Act

316 Stainless Steel

Origin: Barcelona, Spain

IPS (Iron Pipe Size)

Most Comprehensive Package
with over 325 SKUs



SYSTEM DATA

StainlessPress® Fittings Codes & Standards

- ASME B31.1 Power Piping, B31.3 Process Piping, B31.9 Building Services Piping
- IPC, IMC, UPC, UMC
- CPC & CMC (California Plumbing and Mechanical Codes)
- City of Los Angeles Plumbing and Mechanical Codes
- Massachusetts Regulation 248 CMR 10.00: Uniform State Plumbing Code
- Massachusetts State Building Code 780 CMR Ninth Edition: Chapter 28
- National Standard Plumbing Code (NSPC)
- National Plumbing Code of Canada (NPCC)

StainlessPress® Fittings Certifications

- ICC-ES LC 1002 Press Connection Fittings for Potable Water Tube and Radiant Heating Systems
- IAPMO/ANSI/CAN Z1117 Press Connections
- NSF/ANSI/CAN 61 Drinking Water System Components – Health Effects
- NSF/ANSI/CAN 372 Drinking Water System Components – Lead Content
- FM 1920 Pipe Coupling and Fittings for Above Ground Fire Protection Systems
- American Bureau of Shipping Product Design Assessment (PDA) Certificate 1-5-PR1438892-PDA, Piping System and Couplings

StainlessPress® Fittings Temperature & Pressure

- **Operating Pressure:** from full vacuum to 300 PSI on Schedule 5 or 10 Stainless Steel Pipe
- **Temperature Range EPDM:** -4°F to 230°F (-20°C to 110°C)
- **Temperature Range HNBR:** -31°F to 248°F (-35°C to 120°C)
- **Temperature Range FKM:** -4°F to 356°F (-20°C to 180°C)

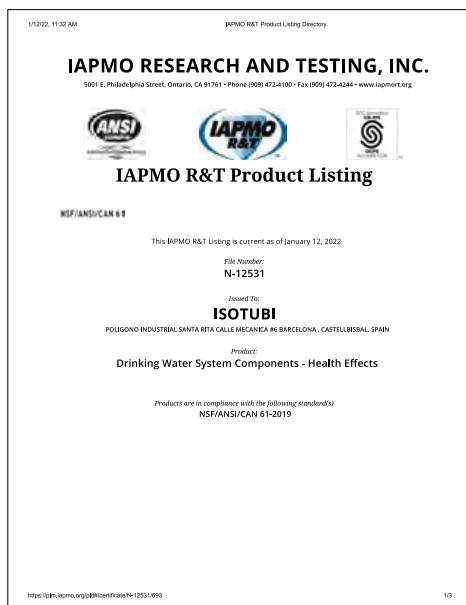
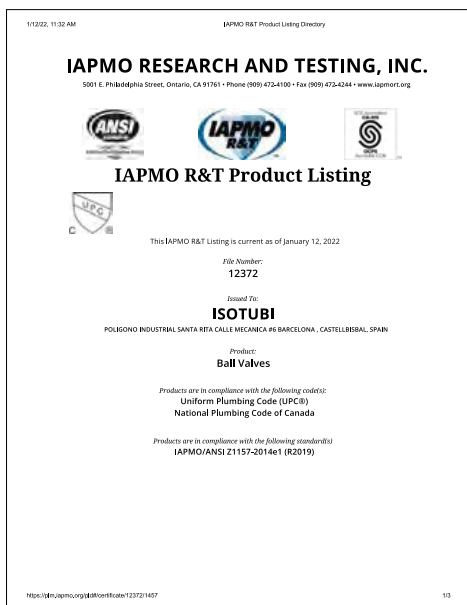
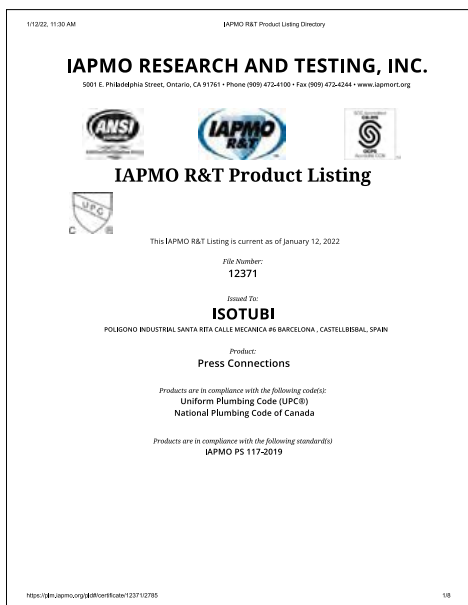
Limited Warranty



We stand behind the quality of our products and offer a **15-year limited warranty*** on our **StainlessPress®** fitting offering. We guarantee that our fittings will be free from defects in materials and workmanship for 15 years from the date of purchase. If any of our fittings fail due to defects during this time, we will replace or repair the product at no cost to the customer.

**This warranty does not cover damage caused by improper installation, misuse, or normal wear and tear.*

FITTINGS NORTH AMERICAN CERTIFICATIONS



MATERIAL SPECIFICATIONS

Fitting Housing

Stainless Steel per ANSI 316L with a wall thickness of 0.065" (1.65mm) and the following characteristics:

- Hygienic material often used in the food, beverage and pharmaceutical industry.
- Excellent corrosion resistance.

Working Pressure

The working pressure range is from full vacuum to 300PSI (20.7 bar) on Schedule 5 and 10 Stainless Steel Pipe.

Sealing Element Specifications

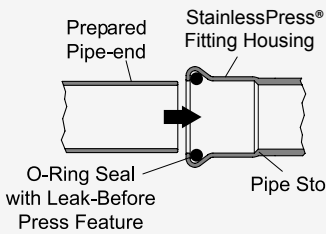
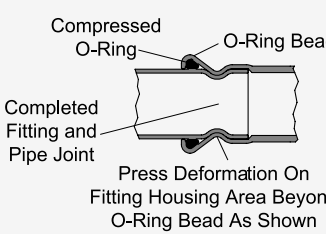
Sealing element style gasket is resistant to hot water, ageing and additives commonly used in drinking water. EPDM are certified to all requirements of NSF/ANSI 61 and NSF/ANSI 372.

EPDM Sealing element (Black color code). Fitting and valve temperature range: -4°F to 230°F (-20°C to 110°C). Recommended for hot water, dilute acids, alkalis, oil free air and many chemical services. Excellent oxidation resistance. NOT FOR USE WITH HYDROCARBONS.

HNBR Sealing Element (Gray color code). Fitting temperature range: -31°F to 248°F (-35°C to 120°C) and Valve temperature range: -13°F to 248°F (-35°C to 120°C). Recommended for petroleum products, vegetable oils, mineral oils and air with oils. NOT FOR USE IN HOT WATER OR HOT AIR.

FKM Sealing Element (Green color code). Fitting and valve temperature range: -4°F to 356°F (-20°C to 180°C). Recommended for oxidizing acids, petroleum products, hydraulic fluids, lubricants, halogenated hydrocarbons.

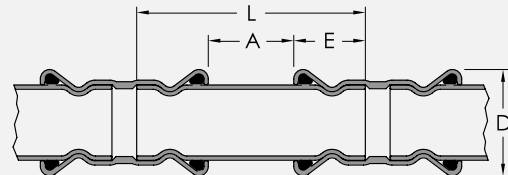
Certified to all requirements of NSF/ANSI 61 and NSF/ANSI 372. **StainlessPress®** Stainless Steel Fittings have IAPMO certifications and are compliant with ASME B31.1, B31.3 and B31.9 piping codes. See table below for a detailed summary of approvals.

Stainless Steel System Agency Approvals					
Fitting Type	Tread Type/Bolt Pattern	Sealing Elements	IAPMO	NSF	
Non-threaded Fittings	N/A	EPDM	Y	Y	 <p>Prepared Pipe-end</p> <p>StainlessPress® Fitting Housing</p> <p>O-Ring Seal with Leak-Before Press Feature</p> <p>Pipe Stop</p>
		HNBR	Y	N	
		FKM	Y	N	
Threaded Fittings	ANSI/ASME B.1.20.1	EPDM	Y	Y	
		HNBR	Y	N	
		FKM	Y	N	
Flange Adapters	ANSI 125/250	EPDM	Y	Y	
		HNBR	Y	N	
		FKM	Y	N	
Other Fittings	N/A	EPDM	N	Y	 <p>Compressed O-Ring</p> <p>O-Ring Bead</p> <p>Completed Fitting and Pipe Joint</p> <p>Press Deformation On Fitting Housing Area Beyond O-Ring Bead As Shown</p>
		HNBR	N	N	
		FKM	N	N	
Valves		EPDM	Y	Y	
		HNBR	Y	N	
		FKM	Y	N	

As shown in the drawings, the **StainlessPress®** by Merit Brass Co. sealing element design provides a unique Leak Before Press (LBP) feature that quickly identifies during pressure testing any fittings unpressed. Fittings unpressed will allow liquids and gases to bypass the seal. The Leak Before Press (LBP) feature significantly reduces the chance of unpressed joints, helping to ensure a leak-free system.

MINIMUM INSTALLATION DISTANCES

Minimum Fitting Distances (in.)					
Nominal Size	O.D.	A	L	E	D
		Minimum Distance Between Fittings	Minimum Pipe Length Between Fittings	Socket Insertion Depth	Fitting Housing Diameter
1/2"	0.840"	0.39"	2.05"	0.83"	1.26"
3/4"	1.050"	0.39"	2.28"	0.94"	1.46"
1"	1.315"	0.39"	2.44"	1.02"	1.73"
1 1/4"	1.660"	0.39"	3.23"	1.22"	2.48"
1 1/2"	1.900"	0.39"	3.23"	1.22"	2.48"
2"	2.375"	0.79"	4.33"	1.22"	3.08"

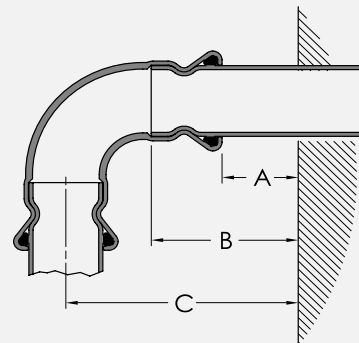


Minimum Fitting Distance is the recommended minimum distances between fittings to permit mechanical forming of the pipe during the pressing process.

Minimum Fitting Distance For Pipe Tolerance & Hanger Support (in.)					
Pipe Size		Pipe Tolerance		Pipework Support	
Nominal Size	O.D.	Pipe O.D. Tolerance +/-	Pipe Wall Thickness Sch. 5	Vertical Intervals	Horizontal Intervals
1/2"	0.840"	0.004"	0.065"	6"	4"
3/4"	1.050"	0.006"	0.065"	6"	5"
1"	1.315"	0.006"	0.065"	8"	6"
1 1/4"	1.660"	0.008"	0.065"	10"	8"
1 1/2"	1.900"	0.008"	0.065"	10"	8"
2"	2.375"	0.011"	0.065"	10"	8"

StainlessPress®, fittings are designed for use with Schedule 5 or 10 Type 304/304L or 316/316L Stainless Steel Pipe conforming to ASTM A-312. Refer to the Pipe Tolerance and Hanger Supports table (to the left) for pipe tolerance specifications. Consult local authority having jurisdiction for additional requirements. Details by pipe manufacturers or application requirements may specify additional hanging requirements. Proper bearing and spacing of supports is necessary to prevent excessive bending or sagging when supporting pipe. For locations where there is insufficient access to accommodate the pressing tool, consider prefabricating the pipework or using an alternate joining method. Tables below show the minimum clearances required for wall and corner installations.

Minimum Clearance For Perpendicular Runs (in.)				
Nominal Size	O.D.	A	B	C
		Minimum Wall to Fitting Distance	Minimum Horizontal Pipe Distance from Wall	Minimum Vertical Pipe Distance from Wall
1/2"	0.840"	1.38"	2.20"	3.78"
3/4"	1.050"	1.38"	2.32"	4.21"
1"	1.315"	1.38"	2.40"	4.76"
1 1/4"	1.660"	1.38"	2.50"	4.92"
1 1/2"	1.900"	1.38"	2.60"	5.08"
2"	2.375"	1.38"	3.15"	6.38"



TOOLING REFERENCEGUIDE

StainlessPress® fittings can be pressed with Milwaukee or Ridgid tools and associated jaws/ rings for carbon steel applications. **Below is a table of Milwaukee and Ridgid's part numbers for your reference.**

StainlessPress® Tools, Kits, Jaws and Rings

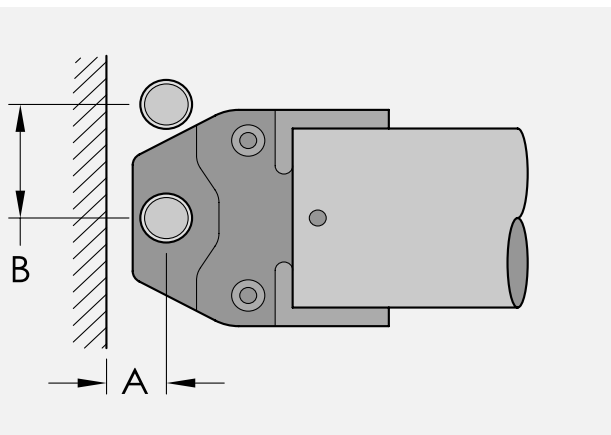
Size	Milwaukee Part #	Tooling Name	Adapter	Press Profile
0.5" - 1.25"	2773-20	M18 Force Logic Press Tool		
1.5" - 2"	2773-20L	M18 Force Logic Long Throw Press Tool		
0.5"	49-16-2650S	0.5" M18 IPS-IA Jaw		IPS - M
0.75"	49-16-2651S	0.75" M18 IPS-IA Jaw		IPS - M
1"	49-16-2652S	1" M18 IPS-IA Jaw		IPS - M
1.25"	49-16-2653S	1.25" M18 IPS-IA Ring	49-16-2659	IPS - M
1.5"	49-16-2654S	1.5" M18 IPS-IA Ring	49-16-2659S	IPS - M
2"	49-16-2655S	2" M18 IPS-IA Ring	49-16-2659S	IPS - M
1.25"	49-16-2659	Ring Jaw 1		
1.5" - 2"	49-16-2659S	Ring Jaw 2		
1.25" - 2"	49-16-2691S	M18 IPS-IA Press Ring Kit (1.25" - 2")		

Note: **StainlessPress®**, by Merit Brass Co. products can be used with Milwaukee, REMS, Ridgid, and Rothenberger tools with the associated Jaws for Stainless Steel Pipe, and IPS-M Profile Press Fittings. Please contact Merit Brass Co. for additional information.



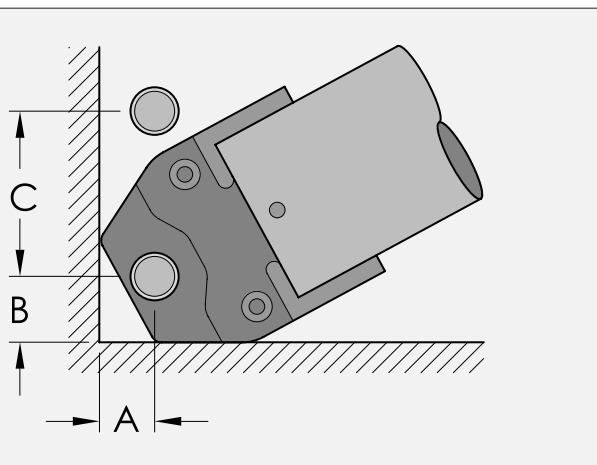
MINIMUM CLEARANCE FOR PRESSING

Minimum Clearance For Perpendicular Runs (in.)			
Pipe Size		A	B
Nominal Size	O.D.	Wall Clearance	Parallel Pipe Clearance
½"	0.840"	0.875"	2.25"
¾"	1.050"	0.875"	2.375"
1"	1.315"	1.00"	2.625"
1¼"	1.660"	1.188"	3.00"
1½"	1.900"	1.188"	3.00"
2"	2.375"	2.375"	5.625"
2"*	2.375"	3.00"	4.625"



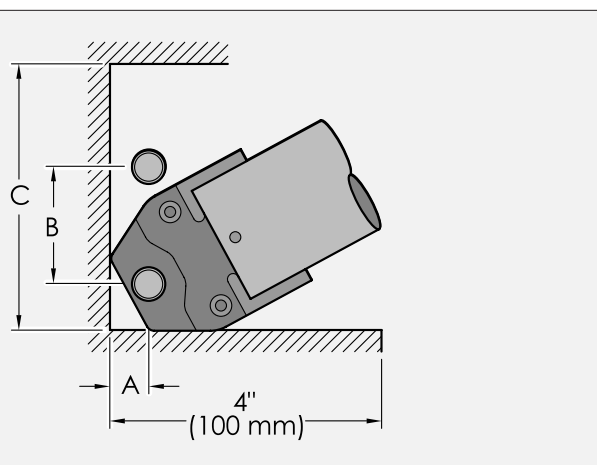
*Loop-Type Jaw clearances. Dimensions may vary based on pressing tool. Refer to pressing tool manufacturer's instructions for specific dimensions. See page 26 for installation instructions.

Minimum Clearance For Perpendicular Runs (in.)				
Pipe Size		A	B	C
Nominal Size	O.D.	Wall Clearance	Wall Clearance	Parallel Pipe Clearance
½"	0.840"	0.875"	1.25"	3.00"
¾"	1.050"	1.00"	1.125"	3.00"
1"	1.315"	1.25"	1.375"	2.625"
1¼"	1.660"	1.25"	1.75"	3.00"
1½"	1.900"	1.25"	1.75"	3.00"
2"	2.375"	2.375"	4.375"	5.625"
2"*	2.375"	3.00"	3.00"	4.625"



*Loop-Type Jaw clearances. Dimensions may vary based on pressing tool. Refer to pressing tool manufacturer's instructions for specific dimensions. See page 26 for installation instructions.

Minimum Clearance For Perpendicular Runs (in.)				
Pipe Size		A	B	C
Nominal Size	O.D.	Wall Clearance	Parallel Pipe Clearance	Minimum Recess Width
½"	0.840"	0.875"	3.00"	0.625"
¾"	1.050"	1.00"	3.00"	5.25"
1"	1.315"	1.25"	2.625"	6.00"
1¼"	1.660"	1.25"	2.625"	6.75"
1½"	1.900"	1.25"	2.625"	6.75"
2"	2.375"	2.375"	5.625"	14.25"
2"*	2.375"	3.00"	4.625"	10.50"



*Loop-Type Jaw clearances. Dimensions may vary based on pressing tool. Refer to pressing tool manufacturer's instructions for specific dimensions. See page 26 for installation instructions.

CHEMICAL COMPATIBILITY CHART

CHEMICAL		CHEMICAL FORMULAS	316 SS	SEALING ELEMENT			VALVE SEAT
				EPDM	HNBR	FKM	PTFE
ACIDS	Acetic Acid 5%	$C_2H_4O_2$	A	A	B	A	A
	Acetic Acid 10%	$C_2H_4O_2$	A	A	C	B	A
	Acetic Acid Glacial	$C_2H_4O_2$	A	A	B	D	A
	Boric Acid 20%	H_3BO_3	A	A	A	A	A
	Nitric Acid 20°C	HNO_3	A	D	D	B	A
BASES	Ammonium Hydroxide Concentrated	NH_4OH	A	A	D	B	A
	Potassium Hydroxide 50% 20°C	KOH	A	A	B	D	A
GASES	Acetylene	C_2H_2	A	A	A	A	A
	Air		A	A	A	A	A
	Argon	Ar	A	A	A	A	A
	Butane	C_4H_{10}	A	D	A	A	A
	Carbon Dioxide	CO_2	A	A	A	A	A
	Carbon Monoxide	CO	A	A	A	A	A
	Ethyl Chloride (no moisture)	C_2H_5Cl	A	B	A	A	A
	Helium	He	A	A	A	A	A
	Hydrogen	H_2	A	A	A	A	A
	Hydrogen Sulfide	H_2S	A	A	A	D	A
	Methane	CH_4	A	D	A	A	A
	Neon	Ne	A	A	A	A	A
	Nitrogen	N	A	A	A	A	A
	Propane	C_3H_8	A	D	A	A	A
	Xenon	Xe	A	A	A	A	A
ALCOHOLS	Amyl Alcohol	$C_5H_{11}OH$	A	A	B	B	A
	Butyl Alcohol (Butanol)	$C_4H_{10}O$	A	B	A	A	A
	Ethyl Alcohol < 80%	C_2H_6O	A	A	A	B	A
	Ethyl Alcohol > 80%	C_2H_6O	A	A	A	B	A
	Glycerine (Glycerol)	$C_3H_5(OH)_3$	A	A	A	A	A
	Isopropyl Alcohol	C_3H_8O	A	A	B	A	A
	Methanol	CH_3OH	A	A	A	D	A

A = Recommended


B = Minor Effect


C = Moderate Effect


D = Unsatisfactory

Recommendations shown above are general in nature. Product service life for a given application is dependent on actual media mixture, pressure, temperature and operational (cycling) parameters. Contact sales@meritbrass.com if you have questions or wish to inquire about compatibility with chemicals not shown in the chart.

SEALING ELEMENTS

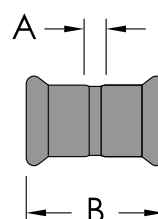
EPDM SEALING ELEMENT		
EPDM	Ethylene-propylene-diene monomer	
Color	Black	
Temperature	Fittings & Valves: -4°F to 230°F (-20°C to 110°C)	
Common Applications	Recommended for hot water, dilute acids, alkalis, oil free air and many chemical services. Excellent oxidation resistance. NOT FOR USE WITH HYDROCARBONS	
Manufacturing Process	Synthetically manufactured & peroxide-cured	
Benefits of Sealing Element	Excellent oxidation resistance	

HNBR SEALING ELEMENT		
HNBR	Hydrogenated Nitrile Butadiene Rubber	
Color	Yellow	
Temperature	Fittings: -31°F to 248°F (-35°C to 120°C) Valves: -13°F to 248°F (-25°C to 120°C)	
Common Applications	Recommended for petroleum products, vegetable oils, mineral oils and air with oils. NOT FOR USE IN HOT WATER OR HOT AIR.	
Manufacturing Process	Synthetically manufactured & peroxide-cured	
Benefits of Sealing Element	Excellent resilience and tear resistance	

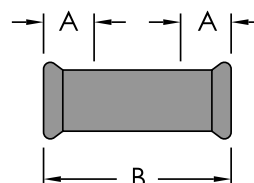
FKM SEALING ELEMENT		
FKM	Fluoroelastomer	
Color	Green	
Temperature	Fittings & Valves: -4°F to 356°F (-20°C to 180°C)	
Common Applications	Recommended for oxidizing acids, oils, hydraulic fluids, chlorinated hydrocarbons, and process water. NOT FOR USE WITH AMMONIA.	
Manufacturing Process	Synthetically manufactured & peroxide cured	
Benefits of Sealing Element	Retains mechanical properties at elevated temperatures	

DIMENSIONAL DATA

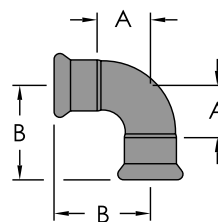
Coupling with Stop					P x P		
Item Number			Nominal Size (in)	O.D.	Dimensions (in)		Weight lbs
EPDM	HNBR	FKM			A	B	
MBF011/26GE	MBF011/26GEH	MBF011/26GEF	½"	0.840	0.42	2.09	0.13
MBF013/46GE	MBF013/46GEH	MBF013/46GEF	¾"	1.050	0.44	2.33	0.18
MBF0116GE	MBF0116GEH	MBF0116GEF	1"	1.315	0.43	2.48	0.23
MBF0111/46GE	MBF0111/46GEH	MBF0111/46GEF	1¼"	1.660	0.71	3.07	0.32
MBF0111/26GE	MBF0111/26GEH	MBF0111/26GEF	1½"	1.900	0.43	2.84	0.40
MBF0126GE	MBF0126GEH	MBF0126GEF	2"	2.375	0.50	4.05	0.74



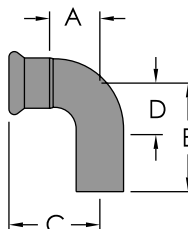
Coupling w/o Stop					P x P		
Item Number			Nominal Size (in)	O.D.	Dimensions (in)		Weight lbs
EPDM	HNBR	FKM			A	B	
MBF021/26GE	MBF021/26GEH	MBF021/26GEF	½"	0.840	0.83	2.95	0.18
MBF023/46GE	MBF023/46GEH	MBF023/46GEF	¾"	1.050	0.95	3.40	0.25
MBF0216GE	MBF0216GEH	MBF0216GEF	1"	1.315	1.02	3.83	0.34
MBF0211/46GE	MBF0211/46GEH	MBF0211/46GEF	1¼"	1.660	1.18	4.49	0.46
MBF0211/26GE	MBF0211/26GEH	MBF0211/26GEF	1½"	1.900	1.20	4.81	0.63
MBF0226GE	MBF0226GEH	MBF0226GEF	2"	2.375	1.77	6.76	1.13



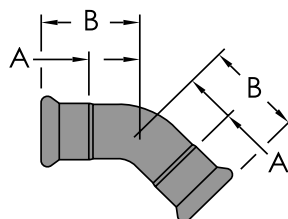
90° Elbow					P x P		
Item Number			Nominal Size (in)	O.D.	Dimensions (in)		Weight lbs
EPDM	HNBR	FKM			A	B	
MBF031/26GE	MBF031/26GEH	MBF031/26GEF	½"	0.840	1.57	2.41	0.22
MBF033/46GE	MBF033/46GEH	MBF033/46GEF	¾"	1.050	1.89	2.84	0.33
MBF0316GE	MBF0316GEH	MBF0316GEF	1"	1.315	2.37	3.40	0.48
MBF0311/46GE	MBF0311/46GEH	MBF0311/46GEF	1¼"	1.660	2.20	3.39	0.56
MBF0311/26GE	MBF0311/26GEH	MBF0311/26GEF	1½"	1.900	2.56	3.76	0.79
MBF0326GE	MBF0326GEH	MBF0326GEF	2"	2.375	3.23	5.00	1.39



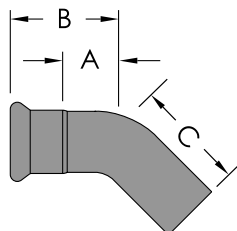
90° Street Elbow					FTG x P				
Item Number			Nominal Size (in)	O.D.	Dimensions (in)				Weight lbs
EPDM	HNBR	FKM			A	B	C	D	
MBF041/26GE	MBF041/26GEH	MBF041/26GEF	½"	0.840	1.57	2.95	2.41	1.34	0.24
MBF043/46GE	MBF043/46GEH	MBF043/46GEF	¾"	1.050	1.89	3.27	2.84	1.69	0.33
MBF0416GE	MBF0416GEH	MBF0416GEF	1"	1.315	2.37	3.82	3.40	2.13	0.37
MBF0411/46GE	MBF0411/46GEH	MBF0411/46GEF	1¼"	1.660	2.20	3.80	3.39	1.97	0.57
MBF0411/26GE	MBF0411/26GEH	MBF0411/26GEF	1½"	1.900	2.48	4.21	3.69	2.24	0.77
MBF0426GE	MBF0426GEH	MBF0426GEF	2"	2.375	3.23	5.59	5.00	3.23	1.34



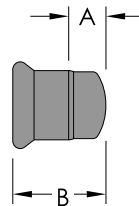
45° Elbow					P x P		
Item Number			Nominal Size (in)	O.D.	Dimensions (in)		Weight lbs
EPDM	HNBR	FKM			A	B	
MBF051/26GE	MBF051/26GEH	MBF051/26GEF	½"	0.840	0.79	1.62	0.18
MBF053/46GE	MBF053/46GEH	MBF053/46GEF	¾"	1.050	0.90	1.85	0.24
MBF0516GE	MBF0516GEH	MBF0516GEF	1"	1.315	1.13	2.14	0.37
MBF0511/46GE	MBF0511/46GEH	MBF0511/46GEF	1¼"	1.660	1.05	2.23	0.50
MBF0511/26GE	MBF0511/26GEH	MBF0511/26GEF	1½"	1.900	1.17	2.37	0.59
MBF0526GE	MBF0526GEH	MBF0526GEF	2"	2.375	1.48	3.24	1.06



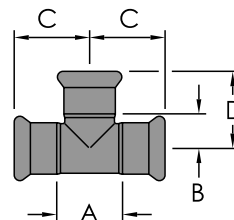
45° Street Elbow					FTG x P			
Item Number			Nominal Size (in)	O.D.	Dimensions (in)			Weight lbs
EPDM	HNBR	FKM			A	B	C	
MBF061/26GE	MBF061/26GEH	MBF061/26GEF	½"	0.840	0.79	1.62	2.25	0.20
MBF063/46GE	MBF063/46GEH	MBF063/46GEF	¾"	1.050	0.90	1.85	2.26	0.26
MBF0616GE	MBF0616GEH	MBF0616GEF	1"	1.315	1.13	2.14	2.49	0.37
MBF0611/46GE	MBF0611/46GEH	MBF0611/46GEF	1¼"	1.660	1.05	2.23	2.63	0.51
MBF0611/26GE	MBF0611/26GEH	MBF0611/26GEF	1½"	1.900	1.17	2.37	2.89	0.60
MBF0626GE	MBF0626GEH	MBF0626GEF	2"	2.375	1.48	3.24	3.83	1.06



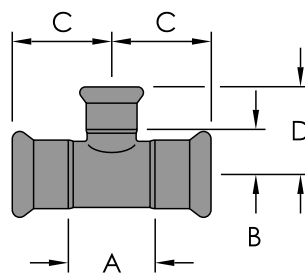
Cap					P		
Item Number			Nominal Size (in)	O.D.	Dimensions (in)		Weight lbs
EPDM	HNBR	FKM			A	B	
MBF211/26GE	MBF211/26GEH	MBF211/26GEF	½"	0.840	0.85	1.68	0.09
MBF213/46GE	MBF213/46GEH	MBF213/46GEF	¾"	1.050	0.75	1.70	0.13
MBF2116GE	MBF2116GEH	MBF2116GEF	1"	1.315	0.83	1.85	0.18
MBF2111/46GE	MBF2111/46GEH	MBF2111/46GEF	1¼"	1.660	0.93	2.11	0.22
MBF2111/26GE	MBF2111/26GEH	MBF2111/26GEF	1½"	1.900	0.95	2.15	0.33
MBF2126GE	MBF2126GEH	MBF2126GEF	2"	2.375	1.10	2.87	0.55



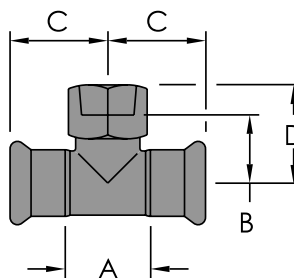
Equal Tee					P x P x P				
Item Number			Nominal Size (in)	O.D.	Dimensions (in)				Weight lbs
EPDM	HNBR	FKM			A	B	C	D	
MBF161/26GE	MBF161/26GEH	MBF161/26GEF	½"	0.840	1.28	0.80	1.48	1.64	0.24
MBF163/46GE	MBF163/46GEH	MBF163/46GEF	¾"	1.050	1.50	0.92	1.70	1.87	0.33
MBF1616GE	MBF1616GEH	MBF1616GEF	1"	1.315	1.78	1.07	1.91	2.09	0.46
MBF1611/46GE	MBF1611/46GEH	MBF1611/46GEF	1¼"	1.660	2.13	1.28	2.24	2.46	0.59
MBF1611/26GE	MBF1611/26GEH	MBF1611/26GEF	1½"	1.900	3.19	1.42	2.80	2.63	0.92
MBF1626GE	MBF1626GEH	MBF1626GEF	2"	2.375	3.22	1.65	3.39	3.43	1.48



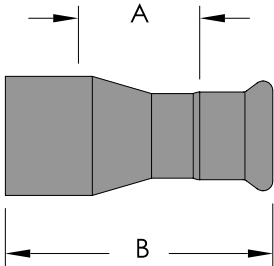
Reducing Tee					P x P x P				
Item Number			Nominal Size (in)	O.D.	Dimensions (in)				Weight lbs
EPDM	HNBR	FKM			A	B	C	D	
MBF153/41/23/46GE	MBF153/41/23/46GEH	MBF153/41/23/46GEF	¾" x ½"	1.050 x 1.050 x 0.840	1.50	0.91	1.70	1.74	0.31
MBF1511/216GE	MBF1511/216GEH	MBF1511/216GEF	1" x ½"	1.315 x 1.315 x 0.840	1.78	1.06	1.91	1.89	0.40
MBF1513/416GE	MBF1513/416GEH	MBF1513/416GEF	1" x ¾"	1.315 x 1.315 x 1.050	1.78	1.07	1.91	2.02	0.42
MBF1511/41/211/46GE	MBF1511/41/211/46GEH	MBF1511/41/211/46GEF	1¼" x ½"	1.660 x 1.660 x 0.840	2.13	1.19	2.25	2.02	0.51
MBF1511/43/411/46GE	MBF1511/43/411/46GEH	MBF1511/43/411/46GEF	1¼" x ¾"	1.660 x 1.660 x 1.050	2.13	1.20	2.25	2.15	0.53
MBF1511/4111/46GE	MBF1511/4111/46GEH	MBF1511/4111/46GEF	1¼" x 1"	1.660 x 1.660 x 1.315	2.12	1.20	2.24	2.22	0.56
MBF1511/21/211/26GE	MBF1511/21/211/26GEH	MBF1511/21/211/26GEF	1½" x ½"	1.900 x 1.900 x 0.840	3.19	1.39	2.80	2.23	0.79
MBF1511/21/211/26GE	MBF1511/21/211/26GEH	MBF1511/23/411/26GEF	1½" x ¾"	1.900 x 1.900 x 1.050	3.19	1.37	2.80	2.34	0.81
MBF1511/2111/26GE	MBF1511/2111/26GEH	MBF1511/2111/26GEF	1½" x 1"	1.900 x 1.900 x 1.315	3.19	1.42	2.80	2.45	0.84
MBF1511/211/411/26GE	MBF1511/211/411/26GEH	MBF1511/211/411/26GEF	1½" x 1¼"	1.900 x 1.900 x 1.660	3.19	1.50	2.80	2.68	0.88
MBF1521/226GE	MBF1521/226GEH	MBF1521/226GEF	2" x ½"	2.375 x 2.375 x 0.840	3.22	1.60	3.39	2.44	1.17
MBF1523/426GE	MBF1523/426GEH	MBF1523/426GEF	2" x ¾"	2.375 x 2.375 x 1.050	3.22	1.68	3.39	2.63	1.19
MBF152126GE	MBF152126GEH	MBF152126GEF	2" x 1"	2.375 x 2.375 x 1.315	3.22	1.61	3.39	2.66	1.23
MBF15211/426GE	MBF15211/426GEH	MBF15211/426GEF	2" x 1¼"	2.375 x 2.375 x 1.660	3.22	1.73	3.38	2.91	1.27
MBF15211/226GE	MBF15211/226GEH	MBF15211/226GEF	2" x 1½"	2.375 x 2.375 x 1.900	3.22	1.65	3.39	2.86	1.32



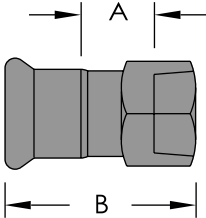
Reducing Tee (P x FPT)					P x P x FPT				
Item Number			Nominal Size (in)	O.D.	Dimensions (in)				Weight lbs
EPDM	HNBR	FKM			A	B	C	D	
MBF121/21/26GE	MBF121/21/26GEH	MBF121/21/26GEF	½"	0.840 x 0.840 x 0.840	1.28	0.93	1.48	1.52	0.26
MBF121/23/46GE	MBF121/23/46GEH	MBF121/23/46GEF	½" x ¾"	0.840 x 0.840 x 1.050	1.28	1.30	1.48	1.84	0.37
MBF123/41/26GE	MBF123/41/26GEH	MBF123/41/26GEF	¾" x ½"	1.050 x 1.050 x 0.840	1.50	0.96	1.70	1.63	0.33
MBF123/43/46GE	MBF123/43/46GEH	MBF123/43/46GEF	¾"	1.050 x 1.050 x 1.050	1.50	1.15	1.70	1.81	0.40
MBF123/416GE	MBF123/416GEH	MBF123/416GEF	¾" x 1"	1.050 x 1.050 x 1.315	1.50	1.12	1.70	1.97	0.46
MBF1211/26GE	MBF1211/26GEH	MBF1211/26GEF	1" x ½"	1.315 x 1.315 x 0.840	1.78	1.11	1.91	1.78	0.42
MBF1213/46GE	MBF1213/46GEH	MBF1213/46GEF	1" x ¾"	1.315 x 1.315 x 1.050	1.78	1.26	1.91	1.96	0.48
MBF12111/46GE	MBF12111/46GEH	MBF12111/46GEF	1" x 1¼"	1.315 x 1.315 x 1.660	1.78	1.59	1.92	2.43	0.91
MBF1211/41/26GE	MBF1211/41/26GEH	MBF1211/41/26GEF	1¼" x ½"	1.660 x 1.660 x 0.840	2.13	1.24	2.25	1.92	0.57
MBF1211/43/46GE	MBF1211/43/46GEH	MBF1211/43/46GEF	1¼" x ¾"	1.660 x 1.660 x 1.050	2.13	1.39	2.25	2.07	0.62
MBF1211/416GE	MBF1211/416GEH	MBF1211/416GEF	1¼" x 1"	1.660 x 1.660 x 1.315	2.13	1.35	2.25	2.11	0.75
MBF1211/411/46GE	MBF1211/411/46GEH	MBF1211/411/46GEF	1¼"	1.660 x 1.660 x 1.660	2.13	1.67	2.24	2.51	1.00
MBF1211/21/26GE	MBF1211/21/26GEH	MBF1211/21/26GEF	1½" x ½"	1.900 x 1.900 x 0.840	3.19	1.44	1.80	2.12	0.85
MBF1211/23/46GE	MBF1211/23/46GEH	MBF1211/23/46GEF	1½" x ¾"	1.900 x 1.900 x 1.050	3.19	1.57	2.80	2.25	0.91
MBF1211/216GE	MBF1211/216GEH	MBF1211/216GEF	1½" x 1"	1.900 x 1.900 x 1.315	3.19	1.59	2.80	2.33	1.03
MBF1211/211/26GE	MBF1211/211/26GEH	MBF1211/211/26GEF	1½"	1.900 x 1.900 x 1.900	3.19	1.54	2.80	2.64	1.27
MBF1221/26GE	MBF1221/26GEH	MBF1221/26GEF	2" x ½"	2.375 x 2.375 x 0.840	3.22	1.65	3.39	2.32	1.19
MBF1223/46GE	MBF1223/46GEH	MBF1223/46GEF	2" x ¾"	2.375 x 2.375 x 1.050	3.22	1.86	3.39	2.54	1.26
MBF12216GE	MBF12216GEH	MBF12216GEF	2" x 1"	2.375 x 2.375 x 1.315	3.22	1.78	3.39	2.52	1.32
MBF12226GE	MBF12226GEH	MBF12226GEF	2"	2.375 x 2.375 x 2.375	3.22	2.26	3.39	3.19	1.90



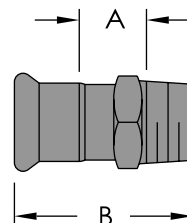
Bushing Reducer					FTG x P		
Item Number			Nominal Size (in)	O.D.	Dimensions (in)		Weight lbs
EPDM	HNBR	FKM			A	B	
MBF143/41/26GE	MBF143/41/26GEH	MBF143/41/26GEF	¾" x ½"	1.050 x 0.840	0.63	3.04	0.18
MBF1411/26GE	MBF1411/26GEH	MBF1411/26GEF	1" x ½"	1.32 x 0.840	0.66	3.26	0.23
MBF1413/46GE	MBF1413/46GEH	MBF1413/46GEF	1" x ¾"	1.32 x 1.050	1.00	3.76	0.26
MBF1411/41/26GE	MBF1411/41/26GEH	MBF1411/41/26GEF	1¼" x ½"	1.660 x 0.840	0.72	3.32	0.27
MBF1411/43/46GE	MBF1411/43/46GEH	MBF1411/43/46GEF	1¼" x ¾"	1.660 x 1.050	1.00	3.25	0.26
MBF1411/416GE	MBF1411/416GEH	MBF1411/416GEF	1¼" x 1"	1.660 x 1.32	0.84	3.52	0.31
MBF1411/21/26GE	MBF1411/21/26GEH	MBF1411/21/26GEF	1½" x ½"	1.900 x 0.840	0.55	3.47	0.33
MBF1411/23/46GE	MBF1411/23/46GEH	MBF1411/23/46GEF	1½" x ¾"	1.900 x 1.050	0.76	3.55	0.55
MBF1411/216GE	MBF1411/216GEH	MBF1411/216GEF	1½" x 1"	1.900 x 1.32	1.19	4.30	0.39
MBF1411/211/46GE	MBF1411/211/46GEH	MBF1411/211/46GEF	1½" x 1¼"	1.900 x 1.600	0.93	4.19	0.44
MBF1421/26GE	MBF1421/26GEH	MBF1421/26GEF	2" x ½"	2.38 x 0.840	0.67	4.17	0.53
MBF1423/46GE	MBF1423/46GEH	MBF1423/46GEF	2" x ¾"	2.38 x 1.050	0.98	4.27	0.35
MBF14216GE	MBF14216GEH	MBF14216GEF	2" x 1"	2.38 x 1.32	0.91	4.33	0.57
MBF14211/46GE	MBF14211/46GEH	MBF14211/46GEF	2" x 1¼"	2.38 x 1.660	0.88	4.66	0.63
MBF14211/26GE	MBF14211/26GEH	MBF14211/26GEF	2" x 1½"	2.38 x 1.900	1.30	4.77	0.72



Female Adapter					P x FPT		
Item Number			Nominal Size (in)	O.D.	Dimensions (in)		Weight lbs
EPDM	HNBR	FKM			A	B	
MBF171/21/26GE	MBF171/21/26GEH	MBF171/21/26GEF	½"	0.840 x 0.840	0.66	2.17	0.20
MBF171/23/46GE	MBF171/23/46GEH	MBF171/23/46GEF	½" x ¾"	0.840 x 1.050	0.92	2.44	0.28
MBF171/216GE	MBF171/216GEH	MBF171/216GEF	½" x 1"	0.840 x 1.315	0.89	2.56	0.43
MBF173/41/26GE	MBF173/41/26GEH	MBF173/41/26GEF	¾" x ½"	1.050 x 0.840	0.84	2.47	0.32
MBF173/43/46GE	MBF173/43/46GEH	MBF173/43/46GEF	¾"	1.050 x 1.050	0.70	2.45	0.28
MBF173/416GE	MBF173/416GEH	MBF173/416GEF	¾" x 1"	1.050 x 1.315	0.66	2.59	0.43
MBF173/411/46GE	MBF173/411/46GEH	MBF173/411/46GEF	¾" x 1¼"	1.050 x 1.660	1.08	3.03	0.72
MBF1711/26GE	MBF1711/26GEH	MBF1711/26GEF	1" x ½"	1.315 x 0.840	0.86	2.56	0.50
MBF1713/46GE	MBF1713/46GEH	MBF1713/46GEF	1 x ¾	1.315 x 1.050	0.86	2.56	0.43
MBF17116GE	MBF17116GEH	MBF17116GEF	1"	1.315 x 1.315	0.72	2.56	0.43
MBF17111/46GE	MBF17111/46GEH	MBF17111/46GEF	1" x 1¼"	1.315 x 1.660	1.10	2.97	0.69
MBF17111/26GE	MBF17111/26GEH	MBF17111/26GEF	1" x 1½"	1.315 x 1.900	1.05	3.13	0.80
MBF1711/41/26GE	MBF1711/41/26GEH	MBF1711/41/26GEF	1¼" x ½"	1.600 x 0.840	0.86	2.72	0.81
MBF1711/416GE	MBF1711/416GEH	MBF1711/416GEF	1¼" x 1"	1.660 x 1.315	0.78	2.72	0.63
MBF1711/411/46GE	MBF1711/411/46GEH	MBF1711/411/46GEF	1¼"	1.660 x 1.660	0.85	2.87	0.74
MBF1711/411/26GE	MBF1711/411/26GEH	MBF1711/411/26GEF	1¼" x 1½"	1.660 x 1.900	0.80	3.03	0.69
MBF1711/216GE	MBF1711/216GEH	MBF1711/216GEF	1½" x 1"	1.900 x 1.315	1.01	3.06	1.26
MBF1711/211/46GE	MBF1711/211/46GEH	MBF1711/211/46GEF	1½" x 1¼"	1.900 x 1.660	0.66	2.70	0.63
MBF1711/211/26GE	MBF1711/211/26GEH	MBF1711/211/26GEF	1½"	1.900 x 1.900	0.80	3.05	0.64
MBF1711/226GE	MBF1711/226GEH	MBF1711/226GEF	1½" x 2"	1.900 x 2.375	1.39	3.65	1.21
MBF17211/46GE	MBF17211/46GEH	MBF17211/46GEF	2" x 1¼"	2.375 x 1.660	0.77	3.39	1.48
MBF17211/26GE	MBF17211/26GEH	MBF17211/26GEF	2" x 1½"	2.375 x 1.900	1.20	3.90	1.83
MBF17226GE	MBF17226GEH	MBF17226GEF	2"	2.375 x 2.375	1.18	3.94	1.04

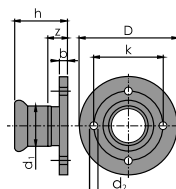


Male Adapter					P x MPT		
Item Number			Nominal Size (in)	O.D.	Dimensions (in)		Weight lbs
EPDM	HNBR	FKM			A	B	
MBF181/21/26GE	MBF181/21/26GEH	MBF181/21/26GEF	½"	0.840 x 0.840	0.78	2.21	0.15
MBF181/23/46GE	MBF181/23/46GEH	MBF181/23/46GEF	½" x ¾"	0.840 x 1.050	0.80	2.30	0.20
MBF181/216GE	MBF181/216GEH	MBF181/216GEF	½" x 1"	0.840 x 1.315	0.81	2.44	0.34
MBF183/41/26GE	MBF183/41/26GEH	MBF183/41/26GEF	¾" x ½"	1.050 x 0.840	0.81	2.35	0.22
MBF183/43/46GE	MBF183/43/46GEH	MBF183/43/46GEF	¾" x ¾"	1.050 x 1.050	0.83	2.43	0.22
MBF183/416GE	MBF183/416GEH	MBF183/416GEF	¾" x 1"	1.050 x 1.315	0.87	2.56	0.29
MBF183/411/46GE	MBF183/411/46GEH	MBF183/411/46GEF	¾" x 1¼"	1.050 x 1.660	0.91	2.66	0.52
MBF1813/46GE	MBF1813/46GEH	MBF1813/46GEF	1" x ¾"	1.32 x 1.050	0.83	2.52	0.28
MBF18116GE	MBF18116GEH	MBF18116GEF	1"	1.32 x 1.32	0.83	2.64	0.32
MBF18111/46GE	MBF18111/46GEH	MBF18111/46GEF	1" x 1¼"	1.32 x 1.660	0.91	2.74	0.52
MBF18111/26GE	MBF18111/26GEH	MBF18111/26GEF	1" x 1½"	1.32 x 1.900	0.91	2.74	0.58
MBF1811/416GE	MBF1811/416GEH	MBF1811/416GEF	1¼" x 1"	1.660 x 1.32	0.98	2.97	0.47
MBF1811/411/46GE	MBF1811/411/46GEH	MBF1811/411/46GEF	1¼"	1.660 x 1.660	0.98	2.97	0.57
MBF1811/411/26GE	MBF1811/411/26GEH	MBF1811/411/26GEF	1¼" x 1½"	1.660 x 1.900	0.98	2.95	0.62
MBF1811/23/46GE	MBF1811/23/46GEH	MBF1811/23/46GEF	1½" x ¾"	1.900 x 1.050	0.91	2.78	0.55
MBF1811/216GE	MBF1811/216GEH	MBF1811/216GEF	1½" x 1"	1.900 x 1.32	0.91	2.90	0.62
MBF1811/211/46GE	MBF1811/211/46GEH	MBF1811/211/46GEF	1½ x 1¼	1.900 x 1.660	0.91	2.92	0.55
MBF1811/211/26GE	MBF1811/211/26GEH	MBF1811/211/26GEF	1½"	1.900 x 1.900	0.91	2.92	0.64
MBF18211/26GE	MBF18211/26GEH	MBF18211/26GEF	2" x 1½"	2.38 x 1.900	0.90	3.48	0.94
MBF18226GE	MBF18226GEH	MBF18226GEF	2"	2.38 x 2.38	0.98	3.82	1.04



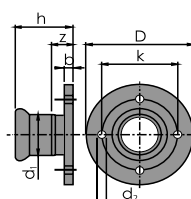
Flange Adapter					P x Flange								
Item Number			Nominal Size (in)	O.D.	Dimensions (in)								Weight lbs
EPDM	HNBR	FKM			D	k	b	d ₁	d ₂	h	n*	z	
MBF191/26GE	MBF191/26GEH	MBF191/26GEF	½"	0.840	3.50	2.37	0.38	1.37	0.62	1.85	4	1.02	0.90
MBF193/46GE	MBF193/46GEH	MBF193/46GEF	¾"	1.050	3.94	3.94	0.44	1.69	0.62	2.21	4	1.27	1.30
MBF1916GE	MBF1916GEH	MBF1916GEF	1"	1.315	4.33	3.13	0.50	2.00	0.62	2.52	4	1.50	1.83
MBF1911/46GE	MBF1911/46GEH	MBF1911/46GEF	1¼"	1.660	4.53	3.50	0.56	2.50	0.62	2.32	4	1.14	2.10
MBF1911/26GE	MBF1911/26GEH	MBF1911/26GEF	1½"	1.900	4.92	3.87	0.63	2.87	0.62	3.40	4	2.20	3.03
MBF1926GE	MBF1926GEH	MBF1926GEF	2"	2.375	5.91	4.75	0.69	3.63	0.75	4.71	4	2.94	4.91

n* = number of such. Ø d₂ Flange material is AISI 304 and the body is AISI 316



Van Stone Flange Adapter					P x Flange								
Item Number			Nominal Size (in)	O.D.	Dimensions (in)								Weight lbs
EPDM	HNBR	FKM			D	k	b	d ₁	d ₂	h	n*	z	
MBF441/26GE	MBF441/26GEH	MBF441/26GEF	½"	0.840	3.54	2.37	0.38	1.38	0.62	3.07	4	2.23	0.95
MBF443/46GE	MBF443/46GEH	MBF443/46GEF	¾"	1.050	3.94	2.75	0.44	1.69	0.62	3.19	4	2.24	1.39
MBF4416GE	MBF4416GEH	MBF4416GEF	1"	1.315	4.25	3.13	0.50	2.00	0.62	3.27	4	2.24	1.84
MBF4411/46GE	MBF4411/46GEH	MBF4411/46GEF	1¼"	1.660	4.53	3.50	0.56	2.50	0.62	3.54	4	2.28	2.40
MBF4411/26GE	MBF4411/26GEH	MBF4411/26GEF	1½"	1.900	4.92	3.87	0.63	2.87	0.62	3.44	4	2.24	2.98
MBF4426GE	MBF4426GEH	MBF4426GEF	2"	2.375	5.91	4.75	0.69	3.63	0.75	4.53	4	2.76	4.79

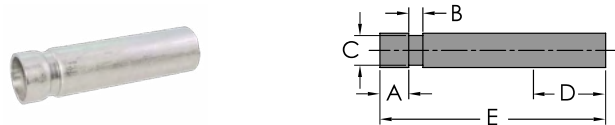
n* = number of such. Ø d₂ Flange material is AISI 304 and the body is AISI 316



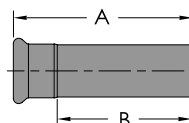
Union					P x P		
Item Number			Nominal Size (in)	O.D.	Dimensions (in)		Weight lbs
EPDM	HNBR	FKM			A	B	
MBF241/26GE	MBF241/26GEH	MBF241/26GEF	½"	0.840	2.27	3.94	0.62
MBF243/46GE	MBF243/46GEH	MBF243/46GEF	¾"	1.050	2.64	4.54	0.82
MBF2416GE	MBF2416GEH	MBF2416GEF	1"	1.315	2.72	4.76	0.97
MBF2411/46GE	MBF2411/46GEH	MBF2411/46GEF	1¼"	1.660	3.22	5.59	1.93
MBF2411/26GE	MBF2411/26GEH	MBF2411/26GEF	1½"	1.900	3.88	6.29	2.36
MBF2426GE	MBF2426GEH	MBF2426GEF	2"	2.375	4.72	8.26	3.70



Transition Adapter			P x Groove					
Item Number	Nominal Size (in)	O.D.	Dimensions (in)					Weight lbs
			A	B	C	D	E	
MBF433/46GT	¾"	1.050	0.625	0.280	0.938	1.57	4.94	0.25
MBF4316GT	1"	1.315	0.625	0.280	1.190	1.18	5.02	0.34
MBF4311/46GE	1¼"	1.660	0.625	0.280	1.540	1.57	5.12	0.67
MBF4311/26GT	1½"	1.900	0.625	0.280	1.775	1.57	5.20	0.63
MBF4326GT	2"	2.375	0.625	0.340	2.250	2.36	5.77	1.13

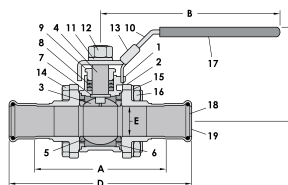


Weld Adapter					Male Weld x Female Press		
Item Number			Nominal Size (in)	O.D.	Dimensions (in)		Weight lbs
EPDM	HNBR	FKM			A	B	
MBF551/26GE	MBF551/26GEH	MBF551/26GEF	½"	0.840	5.13	4.30	0.62
MBF553/46GE	MBF553/46GEH	MBF553/46GEF	¾"	1.050	5.27	4.32	0.82
MBF5516GE	MBF5516GEH	MBF5516GEF	1"	1.315	5.34	4.31	0.97
MBF5511/46GE	MBF5511/46GEH	MBF5511/46GEF	1¼"	1.660	5.58	4.39	1.93
MBF5511/26GE	MBF5511/26GEH	MBF5511/26GEF	1½"	1.900	5.52	4.32	2.36
MBF5526GE	MBF5526GEH	MBF5526GEF	2"	2.375	6.09	4.31	3.70



Ball Valve					P x P				
Item Number			Nominal Size (in)	O.D.	Dimensions (in)				Weight lbs
EPDM	HNBR	FKM			A	B	C	D	
MBF311/26GE	MBF311/26GEH	MBF311/26GEF	½"	0.840	2.82	4.26	2.44	4.49	1.24
MBF313/46GE	MBF313/46GEH	MBF313/46GEF	¾"	1.050	3.50	5.31	2.68	5.39	1.73
MBF3116GE	MBF3116GEH	MBF3116GEF	1"	1.315	3.86	5.30	2.75	5.90	2.46
MBF3111/46GE	MBF3111/46GEH	MBF3111/46GEF	1¼"	1.660	4.17	6.30	3.35	6.53	5.90
MBF3111/26GE	MBF3111/26GEH	MBF3111/26GEF	1½"	1.900	4.72	7.87	3.54	7.13	5.93
MBF3126GE	MBF3126GEH	MBF3126GEF	2"	2.375	5.35	8.27	3.94	8.89	8.48

Operating Pressure: 300 PSI (20.7 bar)



NO.	Part Name	QTY	Material	NO.	Part Name	QTY	Material
1	Body	1	ASTM A351-CF8M	11	Spring Washer	1	AISI 304
2	Cap	1	ASTM A351-CF8M	12	Nut	1	AISI 304
3	Ball	1	ASTM A351-CF8M	13	Latch Lock	1	AISI 304
4	Stem	1	ASTM A276-316	14	Bolt	1	AISI 304
5	Ball Seat	1	RPTFE	15	Spring Washer	1	AISI 304
6	Body Seat	1	Graphite-Filled PTFE	16	Nut	1	AISI 304
7	Thrust Washer	1	Graphite-Filled PTFE	17	Handle Sleeve	1	PVC
8	Stem Packing	1	PTFE	18	Sealing Element	1	EPDM, Nitrile, Fluoroelastomer*
9	Gland Nut	1	AISI 304	19	Ends	1	316L
10	Handle	1	AISI 304				

INSTALLATION INSTRUCTIONS

WARNING: StainlessPress® fittings must be installed in accordance with this section. Always ensure that the pressing tool and its jaws are appropriate for stainless steel schedule 5 or 10 pipe and size of fitting. Always refer to the pressing tool manufacturer's instructions for operation and maintenance prior to use with **StainlessPress®** fittings. Always wear PPE such as a hardhat, gloves, and safety glasses when making press connections. Failure to follow these instructions may void the warranty and result in extensive property damage, serious injury or death.

1. Cut pipe

After selecting the correct size of pipe for the job, ensure that it is clean and free from imperfections. Once inspected, cut the pipe squarely using fine-toothed steel saw. Avoid jagged edges or scratching the tubing's surface. When cutting pipe, it must be cut all the way through. Never partially cut the pipe and break it off as it could cause leakage.



2. Deburr pipe

After the pipe is cut to length, deburr the inside and outside with a file, hand deburrer and an electrical pipe deburrer to remove debris and prevent damage to the sealing element. Once the pipe has been deburred, lightly clean the end of the pipe with a piece of sand cloth or similar material to ensure a smooth, and oil-free surface.



3. Check press fittings

In addition to checking the pipe for any imperfections, check the fitting to ensure that it is free of debris, burrs, etc., and that the sealing element is present and appropriate for the application. If the sealing element is lifted from its bead pocket, gently push it back into place being sure to not transfer dirt or debris to the sealing surface. When checking the seal for the correct fit, do not use oil and lubricants.

4. Measure & mark pipe

With a permanent marker, mark the proper insertion depth at the appropriate distance from the end of the pipe as indicated in the **StainlessPress®** Insertion Depth Chart.

NOTE: improper insertion depth may result in an improper seal.



5. Insert pipe into fitting

Carefully insert the pipe into the fitting to the prescribed insertion depth. The insertion depth mark must be visible after the pipe is inserted in to the fitting to identify any movement that may occur before or after the pressing. In the instance that a fitting does not have a stop, the fitting must be centered between the pipe ends, however, the minimum pipe insertion depth must be maintained and marked.

NOTE: if the pipe is roughly or carelessly inserted into the press fitting, it may cause damage to the sealing element.



6. Verify tool & jaw

Verify that the tool and jaw being used for the application are the appropriate size for the fitting using an approved press tool from the **StainlessPress®** Tooling Table (see page 9).

NOTE: failure to follow these instructions may void the warranty.



7. Position tool

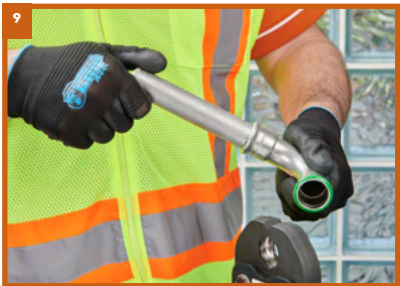
Ensure jaw pressing surfaces are free from debris. Once inspected, insert the approved jaw into the pressing tool and push in, hold the pin until it locks in place. Next, open the jaws and visually check the insertion depth using the mark on the tubing.



Stainless Press® Insertion Depth Chart					
Normal Size					
1/2"	3/4"	1"	1 1/4"	1 1/2"	2"
Insertion Depth					
0.83"	0.94"	1.02"	1.22"	1.22"	1.78"
53/64"	15/16"	1-1/64"	1-7/32"	1-7/16"	1-25/16"

8. Press connection

To begin the pressing process, position the tool jaws on the raised portion at the fitting end(s) then squeeze until the trigger has engaged the sealing element or VIPR® (Visual Indicator Press Ring®). The press tool will complete a cycle then stop. Do not release the trigger until the pressing action is complete. An incomplete press may reduce the pressure retention capabilities of the joint and lead to subsequent system leakage.



9. Remove tool & Inspect press connection

Once the tool has completed a full pressing cycle, release the trigger, and remove the jaw from the fitting.

Once the jaw is removed from the fitting, the VIPR® will break off, indicating a complete press.

NOTE: if the VIPR® does not instantly break off, simply remove by hand. Leak testing Unpressed connections can be identified prior to pressurization by the presence of the VIPR® on the bead outer diameter.

Leak testing

Unpressed connections can be identified prior to pressurization by the presence of the VIPR® on the bead outer diameter. The **StainlessPress®** sealing element is designed to physically leak while unpressed when the system is pressurized with air (45 psi max) or water (85 psi max) or per local codes, giving redundant assurance of installation integrity.

LIMITED WARRANTY

CarbonPress®
By Merit Brass Co.

CopperPress®
By Merit Brass Co.

StainlessPress®
Isotubi-USA, By Merit Brass Co.

MeritPress™
By Merit Brass Co.

LIMITED WARRANTY FOR COPPERPRESS® FITTINGS, COPPERPRESS® VALVES, CARBONPRESS® FITTINGS AND STAINLESSPRESS® FITTINGS AND STAINLESSPRESS® VALVES.

THIS LIMITED WARRANTY GIVES YOU SPECIFIC LEGAL RIGHTS AND YOU MAY ALSO HAVE OTHER RIGHTS, WHICH VARY FROM STATE TO STATE.

THE LIMITED WARRANTY CAN ALSO BE FOUND ONLINE AT WWW.MERITBRASS.COM/WARRANTY-POLICY AND/OR IN THE DOCUMENTATION WE PROVIDE WITH THE APPLICABLE PRODUCT.

WE WARRANT THAT DURING THE WARRANTY PERIOD, THE PRODUCT WILL BE FREE FROM DEFECTS IN MATERIALS AND WORKMANSHIP AS DESCRIBED IN OUR LITERATURE.

WE LIMIT THE DURATION AND REMEDIES OF ALL IMPLIED WARRANTIES, INCLUDING WITHOUT LIMITATION THE WARRANTIES OF MERCHANTABILITY AND FITNESS FOR A PARTICULAR PURPOSE TO THE DURATION OF THIS EXPRESS LIMITED WARRANTY.

SOME STATES DO NOT ALLOW LIMITATIONS ON HOW LONG AN IMPLIED WARRANTY LASTS, SO THE ABOVE LIMITATION MAY NOT APPLY TO YOU.

OUR RESPONSIBILITY FOR DEFECTIVE GOODS IS LIMITED TO REPAIR, OR REPLACEMENT AS DESCRIBED BELOW IN THIS WARRANTY STATEMENT.

Who may use this warranty?

Merit Brass Company located at One Merit Drive, PO Box 43127 Cleveland, OH 44143 ("we") extend this limited warranty only to the consumer who originally purchased the applicable product ("you"). It does not extend to any subsequent owner or other transferee of the product.

What does this warranty cover?

This limited warranty covers defects in materials and workmanship of the: (i) CopperPress® fittings, (ii) the press valves, (iii) the Carbonpress® fittings, and (iv) the Stainlesspress® fittings exclusive of all marine applications and chemical compatibility must be verified via Merit's literature or confirmed by its Technical Department prior to installation (the "product") for the Warranty Period as defined below.

What does this warranty not cover?

This limited warranty does not cover any damage due to: (a) transportation; (b) storage; (c) improper use; (d) failure to follow the product instructions or to perform any preventive maintenance; (e) modifications; (f) unauthorized repair;

(g) normal wear and tear; or (h) external causes such as accidents, abuse, or other actions or events beyond our reasonable control.

What is the period of coverage?

This limited warranty starts on the date of your purchase and lasts for: (i) fifty (50) years for **CopperPress®** fittings, (ii) fifteen (15) years for the **Carbonpress®** fittings and the **Stainlesspress®** fittings, and (iii) five (5) years for the press valves (collectively the "**Warranty Period**"). The Warranty Period is not extended if we repair or replace the product. We may change the availability of this limited warranty at our discretion, but any changes will not be retroactive.

What are your remedies under this warranty?

With respect to any defective product during the applicable Warranty Period, we will, in our sole discretion repair or replace such product (or the defective part) free of charge. We will also pay for shipping and handling fees to return the repaired or replacement product to you.

How do you obtain warranty service?

To obtain warranty service, you must call 1-800-726-9800 or email our Warranty Claims Department at returns@meritbrass.com during the applicable Warranty Period to obtain a Return Material Authorization ("RMA") number. No warranty service will be provided without an RMA number. Upon receipt of the RMA, and at your expense, products suspected of being defective shall be returned to Merit's Warranty Claims Department at One Merit Drive, Cleveland, OH 44143. Within about six weeks of receipt, Merit will determine the cause of failure and notify the purchaser of our findings.

Limitation of liability

THE REMEDIES DESCRIBED ABOVE ARE YOUR SOLE AND EXCLUSIVE REMEDIES AND OUR ENTIRE LIABILITY FOR ANY BREACH OF THIS LIMITED WARRANTY. OUR LIABILITY SHALL UNDER NO CIRCUMSTANCES EXCEED THE ACTUAL AMOUNT PAID BY YOU FOR THE DEFECTIVE PRODUCT, NOR SHALL WE UNDER ANY CIRCUMSTANCES BE LIABLE FOR ANY CONSEQUENTIAL, INCIDENTAL, SPECIAL OR PUNITIVE DAMAGES OR LOSSES, WHETHER DIRECT OR INDIRECT AND/OR WHETHER CAUSED BY WATER, MOLD, LOSS OF EQUIPMENT, PROPERTY, REVENUE OR COST OF CAPITAL.

SOME STATES DO NOT ALLOW THE EXCLUSION OR LIMITATION OF INCIDENTAL OR CONSEQUENTIAL DAMAGES, SO THE ABOVE LIMITATION OR EXCLUSION MAY NOT APPLY TO YOU.

NOTES

CarbonPress®
By Merit Brass Co.

CopperPress®
By Merit Brass Co.

StainlessPress®
Isolubi-USA, By Merit Brass Co.

MeritPress™
By Merit Brass Co.



LOCATIONS

SPARKS DISTRIBUTION CENTER
200 Vista Boulevard Suite #106
Sparks, NV 89434

LONG BEACH PIPE DEPOT
2396 E. Artesia Blvd
Long Beach, CA 90805

DALLAS DISTRIBUTION CENTER
10614 King William Drive
Dallas, TX 75220

CLEVELAND HEADQUARTERS
One Merit Drive/PO Box 43127
Cleveland, OH 44143

BIRMINGHAM DISTRIBUTION CENTER
220 Oxmoor Court
Birmingham, AL 35209

HOUSTON DISTRIBUTION CENTER
4680 S. Sam Houston Pkwy W, Suite 120
Houston, TX 77053

CONTACT US



800.726.9800
contactus@meritbrass.com

LEARN MORE



Revised Jan 2024