

Find us in

MasterSpec[®]

Powered by Deltek Specpoint[®]

StainlessPress[®]

Isotubi-USA, By Merit Brass Co.

Innovative Solutions

Driven to Provide Value to Your System



**MERIT
BRASS**

DIRECTING THE FLOW OF *Quality*

www.meritbrass.com
www.mbwebxpress.com

Streamlining Project Planning & Execution

Save **up to 30%** in project planning, cost & execution



Supporting Distribution Growth Strategies Through Vertical Market Relationship Building



Training at Every Stage of the Process with Your Success in Mind



Saves Time, Money & Labor

No Soldering or Burn Permit Needed. Shorter Lay Lengths for Those Tighter Spaces

FEATURES & BENEFITS

EPDM, HNBR & FKM

15-Year Limited Warranty on Fittings & 5-Year Limited Warranty on StainlessPress® Valves. VIPR® facilitates immediate identification of unpressed connection as well as application.

FIRST TO MARKET

VIPR®
Visual Indicator Press Ring®
TECHNOLOGY



IPS (Iron Pipe Size)

4 Path Leak Before Press (LBP) System

Buy American Act

316 Stainless Steel

Origin: Barcelona, Spain

Mates with S5 & S10, 304 & 316 Stainless Steel Pipe



Box, bag and ring are Color-Coordinated to the Sealing Element

PRODUCT OFFERING



Description	Size Range
316 StainlessPress® Coupling with Stop	1/2" - 2"
316 StainlessPress® Coupling w/o Stop	1/2" - 2"
316 StainlessPress® 90° Elbow	1/2" - 2"
316 StainlessPress® 90° Street Elbow	1/2" - 2"
316 StainlessPress® 45° Elbow	1/2" - 2"
316 StainlessPress® 45° Street Elbow	1/2" - 2"
316 StainlessPress® Equal Tee	1/2" - 2"
316 StainlessPress® Cap	1/2" - 2"
316 StainlessPress® Reducing Tee	3/4" - 2"
316 StainlessPress® Reducing Tee (P x FPT)	3/4" - 2"
316 StainlessPress® Bushing Reducer	3/4" - 2"
316 StainlessPress® Female Adapter	1/2" - 2"
316 StainlessPress® Male Adapter	1/2" - 2"
316 StainlessPress® Flange Adapter	1/2" - 2"
316 StainlessPress® Van Stone Flange Adapter	1/2" - 2"
316 StainlessPress® Union	1/2" - 2"
316 StainlessPress® Transition Adapter	1/2" - 2"
316 StainlessPress® Weld Adapter	3/4" - 2"
316 StainlessPress® Ball Valve	1/2" - 2"

Note: Size range is for all sealing element materials (HNBR, EPDM and FKM)

SYSTEM DATA

StainlessPress® Fitting Codes & Standards

- ASME B31.1 Power Piping, B31.3 Process Piping, B31.9 Building Services Piping
- IPC, IMC, UPC, UMC
- CPC & CMC (California Plumbing and Mechanical Codes)
- City of Los Angeles Plumbing and Mechanical Codes
- Massachusetts Regulation 248 CMR 10.00: Uniform State Plumbing Code
- Massachusetts State Building Code 780 CMR Ninth Edition: Chapter 28
- National Standard Plumbing Code (NSPC)
- National Plumbing Code of Canada (NPCC)

StainlessPress® Fitting Certifications

- ICC-ES LC 1002 Press Connection Fittings for Potable Water Tube and Radiant Heating Systems
- IAPMO/ANSI/CAN Z1117 Press Connections
- NSF/ANSI/CAN 61 Drinking Water System Components – Health Effects
- NSF/ANSI/CAN 372 Drinking Water System Components – Lead Content
- FM 1920 Pipe Coupling and Fittings for Above Ground Fire Protection Systems
- American Bureau of Shipping Product Design Assessment (PDA) Certificate 1-5-PR1438892-PDA, Piping System and Couplings

StainlessPress® Fitting Temperature & Pressure

- **Operating Pressure:** from full vacuum to 300 PSI on Schedule 5 or 10 Stainless Steel Pipe
- **Temperature Range**
 - » **EPDM:** -4°F to 230°F (-20°C to 110°C)
 - » **HNBR:** -31°F to 248°F (-35°C to 120°C)
 - » **FKM:** -4°F to 356°F (-20°C to 180°C) – Available upon request

NOTE: Code, standard and certification compliance is sealing element dependent. Only products with EPDM seals are suitable for potable water applications. Contact Merit Brass Customer Service for additional information.

Limited Warranty



We stand behind the quality of our products and offer a **15-year limited warranty*** on our **StainlessPress®** fitting offering. We guarantee that our fittings will be free from defects in materials and workmanship for 15 years from the date of purchase. If any of our fittings fail due to defects during this time, we will replace or repair the product at no cost to the customer.

**This warranty does not cover damage caused by improper installation, misuse, or normal wear and tear.*

CHEMICAL COMPATIBILITY CHART

	Chemical	Chemical Formulas	316 SS	StainlessPress® Seals			Valve Seat
				EPDM	HNBR	FKM	PTFE
Acids	Acetic Acid 5%	$C_2H_4O_2$	A	A	B	A	A
	Acetic Acid 10%	$C_2H_4O_2$	A	A	C	B	A
	Acetic Acid Glacial	$C_2H_4O_2$	A	A	B	D	A
	Boric Acid 20%	H_3BO_3	A	A	A	A	A
	Nitric Acid 20°C	HNO_3	A	D	D	B	A
Bases	Ammonium Hydroxide Concentrated	NH_4OH	A	A	D	B	A
	Potassium Hydroxide 50% 20°C	KOH	A	A	B	D	A
Gases	Acetylene	C_2H_2	A	A	A	A	A
	Air		A	A	A	A	A
	Argon	Ar	A	A	A	A	A
	Butane	C_4H_{10}	A	D	A	A	A
	Carbon Dioxide	CO_2	A	A	A	A	A
	Carbon Monoxide	CO	A	A	A	A	A
	Ethyl Chloride (no moisture)	C_2H_5Cl	A	B	A	A	A
	Helium	He	A	A	A	A	A
	Hydrogen	H_2	A	A	A	A	A
	Hydrogen Sulfide	H_2S	A	A	A	D	A
	Methane	CH_4	A	D	A	A	A
	Neon	Ne	A	A	A	A	A
	Nitrogen	N	A	A	A	A	A
	Propane	C_3H_8	A	D	A	A	A
Xenon	Xe	A	A	A	A	A	
Alcohols	Amyl Alcohol	$C_5H_{11}OH$	A	A	B	B	A
	Butyl Alcohol (Butanol)	$C_4H_{10}O$	A	B	A	A	A
	Ethyl Alcohol < 80%	C_2H_6O	A	A	A	B	A
	Ethyl Alcohol > 80%	C_2H_6O	A	A	A	B	A
	Glycerine (Glycerol)	$C_3H_5(OH)_3$	A	A	A	A	A
	Isopropyl Alcohol	C_3H_8O	A	A	B	A	A
	Methanol	CH_3OH	A	A	A	D	A

A = Recommended

B = Minor Effect

C = Moderate Effect

D = Unsatisfactory

Recommendations shown above are general in nature. Product service life for a given application is dependent on actual media mixture, pressure, temperature and operational (cycling) parameters. Contact sales@meritbrass.com if you have questions or wish to inquire about compatibility with chemicals not shown in the chart.

SEALING ELEMENTS

Sealing element is resistant to hot water, ageing and additives commonly used in drinking water. EPDM and Nitrile are certified to all requirements of NSF/ANSI 61, Annex G and NSF/ANSI 372.

EPDM SEALING ELEMENT	
EPDM	Ethylene-propylene-diene monomer
Color	Black
Temperature	Fittings & Valves: -4°F to 230°F (-20°C to 110°C)
Common Applications	Recommended for hot water, dilute acids, alkalies, oil free air and many chemical services. Excellent oxidation resistance. NOT FOR USE WITH HYDROCARBONS
Manufacturing Process	Synthetically manufactured & peroxide-cured
Benefits of Sealing Element	Excellent oxidation resistance



HNBR SEALING ELEMENT	
HNBR	Hydrogenated Nitrile Butadiene Rubber
Color	Yellow
Temperature	Fittings: -31°F to 248°F (-35°C to 120°C) Valves: -13°F to 248°F (-25°C to 120°C)
Common Applications	Recommended for petroleum products, vegetable oils, mineral oils and air with oils. NOT FOR USE IN HOT WATER OR HOT AIR.
Manufacturing Process	Synthetically manufactured & peroxide-cured
Benefits of Sealing Element	Excellent resilience and tear resistance



FKM SEALING ELEMENT	
FKM	Fluoroelastomer
Color	Green
Temperature	Fittings & Valves: -4°F to 356°F (-20°C to 180°C)
Common Applications	Recommended for oxidizing acids, oils, hydraulic fluids, chlorinated hydrocarbons, and process water. NOT FOR USE WITH AMMONIA.
Manufacturing Process	Synthetically manufactured & peroxide cured
Benefits of Sealing Element	Retains mechanical properties at elevated temperatures



NOTE: The FKM Sealing Element is available Upon Request. Please contact your sales representative for more information.

TOOLING REFERENCE GUIDE

StainlessPress® Tools, Kits, Jaws and Rings				
Size	Milwaukee Part #	Tooling Name	Adapter	Press Profile
0.5" - 1.25"	2773-20	M18 Force Logic Press Tool		
1.5" - 2"	2773-20L	M18 Force Logic Long Throw Press Tool		
0.5"	49-16-2650S	0.5" M18 IPS-IA Jaw		IPS - M
0.75"	49-16-2651S	0.75" M18 IPS-IA Jaw		IPS - M
1"	49-16-2652S	1" M18 IPS-IA Jaw		IPS - M
1.25"	49-16-2653S	1.25" M18 IPS-IA Ring	49-16-2659	IPS - M
1.5"	49-16-2654S	1.5" M18 IPS-IA Ring	49-16-2659S	IPS - M
2"	49-16-2655S	2" M18 IPS-IA Ring	49-16-2659S	IPS - M
1.25"	49-16-2659	Ring Jaw 1		
1.5" - 2"	49-16-2659S	Ring Jaw 2		
1.25" - 2"	49-16-2691S	M18 IPS-IA Press Ring Kit (1.25" - 2")		



StainlessPress®, by Merit Brass Co. products can be used with Milwaukee, REMS, Ridgid, and Rothenberger tools with the associated Jaws for Stainless Steel Pipe, and IPS-M Profile Press Fittings. Please contact Merit Brass Co. for additional information.

THREE PIECE BALL VALVE | SIZES: 1/2" – 2"

StainlessPress® Ball Valve Codes & Standards

In compliance with the Buy American Act

- ASME B31.1 Power Piping, B31.3 Process Piping, B31.9 Building Services Piping
- IPC, IMC, UPC, UMC
- CPC & CMC (California Plumbing and Mechanical Codes)
- City of Los Angeles Plumbing and Mechanical Codes
- Massachusetts Regulation 248 CMR 10.00: Uniform State Plumbing Code
- Massachusetts State Building Code 780 CMR Ninth Edition: Chapter 28
- National Standard Plumbing Code (NSPC)
- National Plumbing Code of Canada (NPCC)

StainlessPress® Valve Certifications

- ICC-ES LC 1002 Press Connection Fittings for Potable Water Tube and Radiant Heating Systems
- IAPMO/ANSI/CAN Z1157 Ball Valves
- NSF/ANSI/CAN 61 Drinking Water System Components – Health Effects
- NSF/ANSI/CAN 372 Drinking Water System Components – Lead Content

Design Features

VIPR® (Visual Indicator Press Ring®)
facilitates immediate identification of un-pressed connections

Temperature Range (HNBR)
-13°F to 248°F (-25°C to 120°C)

HNBR

Leak Before Press - in addition to the VIPR®, valve incorporates four path LBP technology, guaranteeing a visual indication if not pressed

Latch-Lock Handle
facilitates locking in the open and closed positions

Full Port Quarter-Turn Valve

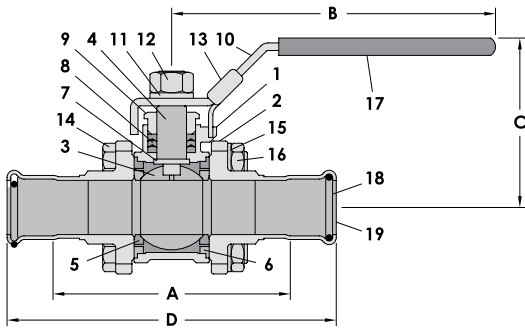
Maximum Working Pressure - 300 psi

IPS (Iron Pipe Size) used with schedule 5 or 10 stainless steel pipe

EPDM

Temperature Range (EPDM)
-4°F to 230°F (-20°C to 110°C)





StainlessPress® Three Piece Ball Valve			Sizes: 1/2" – 2"
NO.	Part Name	QTY	Material
1	Body	1	ASTM A351-CF8M
2	Cap	1	ASTM A351-CF8M
3	Ball	1	ASTM A351-CF8M
4	Stem	1	ASTM A276-316
5	Ball Seat	1	RPTFE
6	Body Seat	1	Graphite-Filled PTFE
7	Thrust Washer	1	Graphite-Filled PTFE
8	Stem Packing	1	PTFE
9	Gland Nut	1	AISI 304
10	Handle	1	AISI 304
11	Spring Washer	1	AISI 304
12	Nut	1	AISI 304
13	Latch Lock	1	AISI 304
14	Bolt	4	AISI 304
15	Spring Washer	4	AISI 304
16	Nut	4	AISI 304
17	Handle Sleeve	1	PVC
18	Sealing Element	2	EPDM, Nitrile, Fluoroelastomer*
19	StainlessPress® Ends	2	316L

*For more information on Fluoroelastomer Sealing Elements, please contact Merit.

Ball Valve					P x P				
Item Number			Nominal Size (in)	O.D.	Dimensions (in)				Weight lbs
EPDM	HNBR	FKM			A	B	C	D	
MBF311/26GE	MBF311/26GEH	MBF311/26GEF	1/2"	0.840	2.82	4.26	2.44	4.49	1.24
MBF313/46GE	MBF313/46GEH	MBF313/46GEF	3/4"	1.050	3.50	5.31	2.68	5.39	1.73
MBF3116GE	MBF3116GEH	MBF3116GEF	1"	1.315	3.86	5.30	2.75	5.90	2.46
MBF3111/46GE	MBF3111/46GEH	MBF3111/46GEF	1 1/4"	1.660	4.17	6.30	3.35	6.53	5.90
MBF3111/26GE	MBF3111/26GEH	MBF3111/26GEF	1 1/2"	1.900	4.72	7.87	3.54	7.13	5.93
MBF3126GE	MBF3126GEH	MBF3126GEF	2"	2.375	5.35	8.27	3.94	8.89	8.48

Operating Pressure: 300 PSI (20.7 bar)



STAINLESS STEEL PIPE

Features

- Available in ½" – 12" & 16"
- Welded and Seamless
- Welded pipe available in bundles and sub-bundles
- Schedules 10, 40 and 80
- Schedule 10 Mates with StainlessPress® Fittings
- Meets ASTM A-312/ASME SA-312 Specification
- Meets NSF/ANSI 372 as a Lead-Free Product



Used in Water Treatment, Wastewater Treatment, Oil, Gas, Chemical, Pharmaceutical, Medical, Commercial Plumbing, Residential Plumbing, Automotive, Transportation, Architecture, Construction, Power Generation, Food, Beverage, Pulp, Paper, OEM, and Petrochemical Applications

Standard Labeling

For welded pipe, all bundles are marked with a unique QR Code, which contains:



- Sub-Bundle Quantity Detail
- Merit Brass Co.'s Part Number
- ASTM A312/A312 Specification
- Alloy (304/L or 316/L)
- Diameter
- Merit Brass Purchase Order Number
- Bundle Quantity Detail
- Heat Number
- Date of Packaging

Merit offers regular flatbed services on our **WOW (Warehouse on Wheels)** Runs to safely transport your pipe. Available at all of our convenient locations



CarbonPress®
By Merit Brass Co.

CopperPress®
By Merit Brass Co.

StainlessPress®
Isotubi-USA, By Merit Brass Co.

MeritPress™
By Merit Brass Co.



LOCATIONS

SPARKS DISTRIBUTION CENTER
200 Vista Boulevard Suite #106
Sparks, NV 89434

LONG BEACH PIPE DEPOT
2396 E. Artesia Blvd
Long Beach, CA 90805

DALLAS DISTRIBUTION CENTER
10614 King William Drive
Dallas, TX 75220

CLEVELAND HEADQUARTERS
One Merit Drive/PO Box 43127
Cleveland, OH 44143

BIRMINGHAM DISTRIBUTION CENTER
220 Oxmoor Court
Birmingham, AL 35209

HOUSTON DISTRIBUTION CENTER
4680 S. Sam Houston Pkwy W, Suite 120
Houston, TX 77053

CONTACT US



800.726.9800
contactus@meritbrass.com

LEARN MORE



Revised Jan 2024